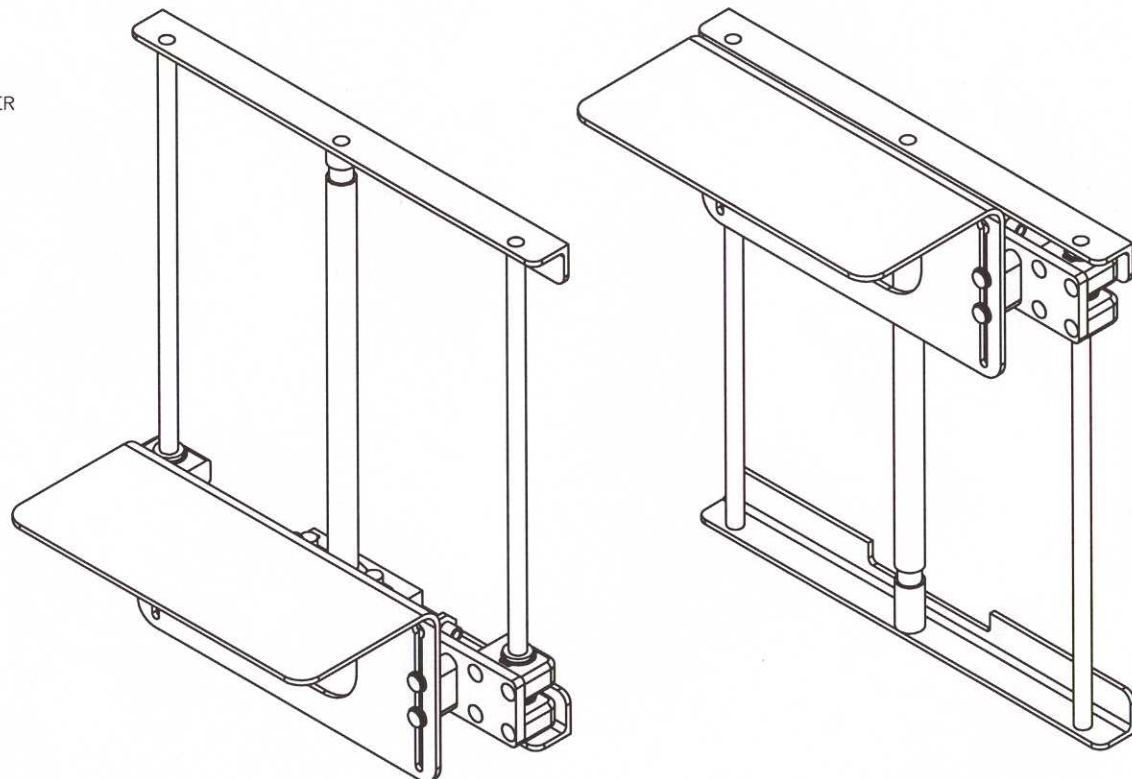

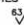


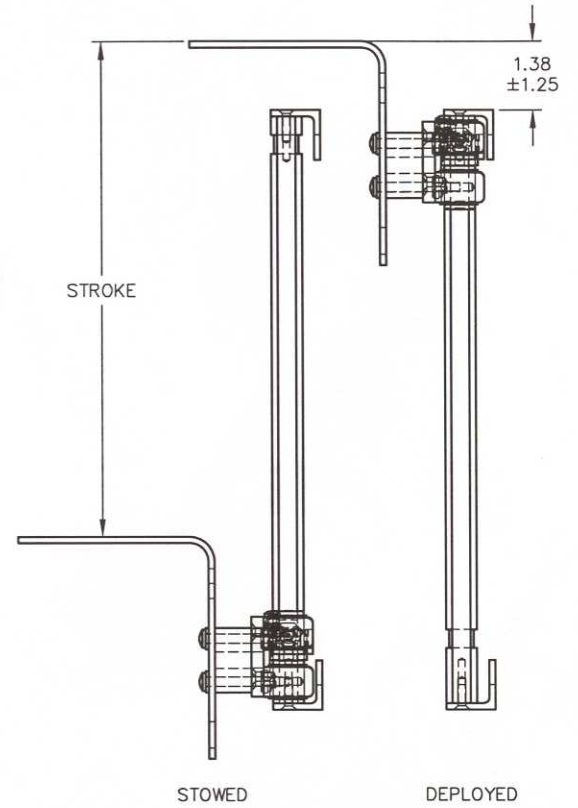
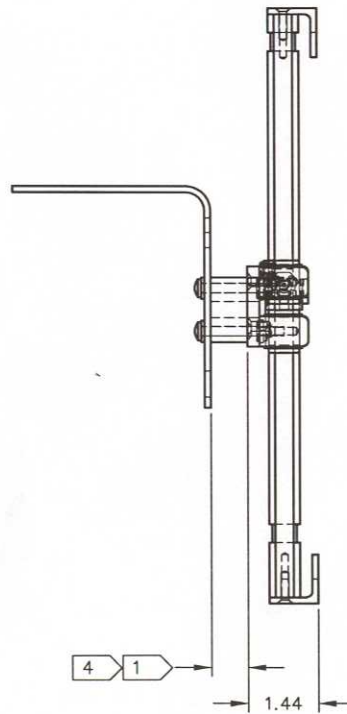
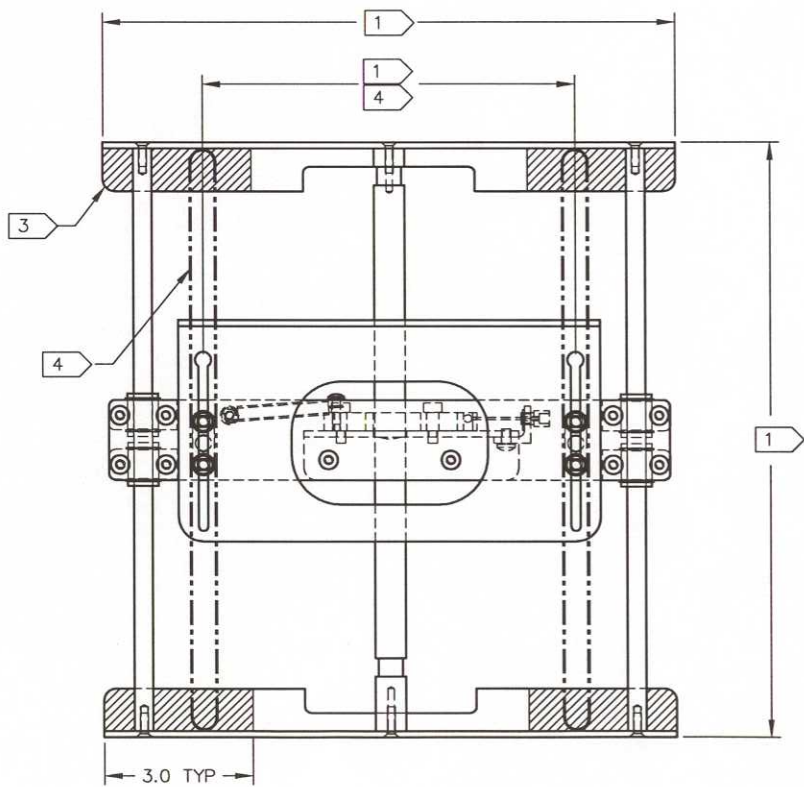
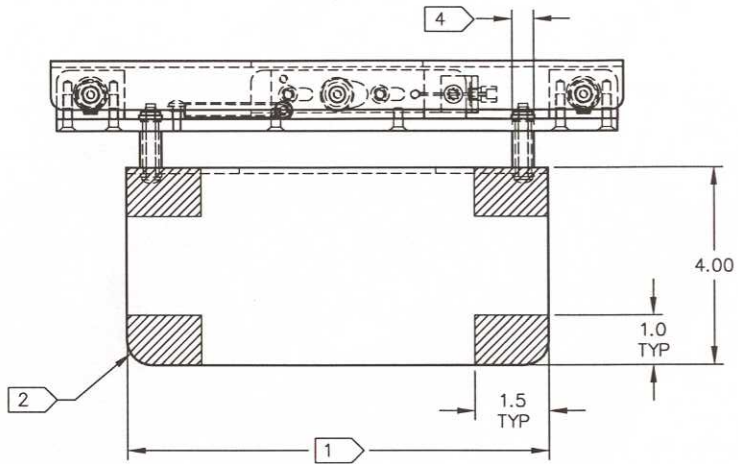
NOTES:

- 1 REFER TO THE TOP LEVEL "ERP" BILL OF MATERIALS FOR ACTUAL HEIGHT AND WIDTH DEPENDENT PART NUMBERS THAT ARE REQUIRED. SUPPLY A COPY OF THE "ERP" BILL OF MATERIALS AND THE DRAWINGS OF THE REQUIRED PARTS NEEDED WITH THIS DOCUMENT. USE THE DRAWINGS TO DEFINE ACTUAL DIMENSIONS FOR INSTALLATION.
- 2 ATTACHMENT OF P/N 20310-XX, SIDEWALL STABILIZER ASSEMBLY TO THE TABLE TOP.
 - A. THE TABLE TOP MUST BE FASTENED TO THE SIDEWALL STABILIZER WITH A MINIMUM OF FOUR AN3 BOLTS (OR EQUIV.) IN THE HATCHED AREA SHOWN IN THE TOP VIEW. ADDITIONAL SCREWS OUTSIDE THE HATCHED AREA MAY IMPROVE RIGIDITY. IF THE SLIDETOP OPTION IS USED, THE TOP PLATE OF PEDESTAL ASSEMBLY MUST BE ATTACHED TO THE SIDEWALL STABILIZER INSTEAD OF THE TABLE TOP.
 - B. IF THE "CENTER OF GRAVITY" IS OFFSET FROM THE PEDESTAL LEG OR THE DISTANCE BETWEEN THE PEDESTAL LEG AND THE SIDEWALL STABILIZER IS EXCESSIVE, THEN IT IS RECOMMENDED TO USE THE OPTIONAL GAS SPRING KIT P/N 00056-XX.
 - C. THE COMPLIANCE OF THE TABLE TOP TO FEDERAL AVIATION REGULATIONS IS THE RESPONSIBILITY OF THE INSTALLER.
- 3 ATTACHMENT OF P/N 20310-XX, SIDEWALL STABILIZER ASSEMBLY TO THE AIRCRAFT STRUCTURE.
 - A. THE PEDESTAL TABLE TOP ASSEMBLY MUST BE FASTENED TO THE AIRCRAFT STRUCTURE WITH A MINIMUM OF FOUR AN3 BOLTS OR MS24694 SCREWS (OR EQUIV.) IN THE HATCHED AREA SHOWN IN THE FRONT VIEW. ADDITIONAL SCREWS OUTSIDE THE HATCHED AREA MAY IMPROVE RIGIDITY.
 - B. THE ABILITY OF THE AIRCRAFT STRUCTURE TO RESIST THE LOADS OF THE PEDESTAL TABLE TOP ASSEMBLY UNDER THE DESIGN LOAD FACTORS IS THE RESPONSIBILITY OF THE INSTALLER
 - C. COMPLIANCE TO APPLICABLE FEDERAL AVIATION REGULATIONS REGARDING AISLE CLEARANCE REQUIREMENTS IS THE RESPONSIBILITY OF THE INSTALLER.
- 4 INSTALLER WILL NEED TO MAKE TWO .50" WIDE VERTICAL SLOTS IN THE SIDEWALL TO ALLOW THE MOUNT PLATE TO EXTEND INTO THE CABIN.



REVISIONS				
LTR	DESCRIPTION	REV BY	APPROVED	DATE
A	INITIAL RELEASE	JMC	JMC	12/16/97
B	SEE DRN N20310B	D.P.	KET	07/07/00
C	SEE DRN N20310C	D.P.	KET	08/21/00
D	SEE DRN N20310D	D.P.	KET	10/31/00
E	SEE ECO N20310E	D.P.	KET	03/20/01
F	SEE ECO N20310F	RAB	RAB	Rev 1/2/02

<p style="font-size: 2em; color: blue;">Released</p> <p>INSPECTION CLASS A</p>	<p>DRAWN</p> <p>JMC</p>	 <p>Austin, Texas</p>						
	<p>FINISH:</p> <p>N/A</p>							
<p>UNLESS OTHERWISE SPECIFIED TOLERANCES:</p> <table style="width: 100%; border: none;"> <tr> <td style="width: 50%;">DECIMAL</td> <td style="width: 50%;">ANGULAR</td> </tr> <tr> <td>.XX ± .01</td> <td>± 1'</td> </tr> <tr> <td>.XXX ± .005</td> <td></td> </tr> </table>	DECIMAL	ANGULAR	.XX ± .01	± 1'	.XXX ± .005		<p>MATERIAL:</p> <p>N/A</p>	<p>TITLE</p> <p>INSTALLATION, SIDEWALL STABILIZER</p>
DECIMAL	ANGULAR							
.XX ± .01	± 1'							
.XXX ± .005								
<p>DIMENSIONS ARE IN INCHES</p> <p>ALL MACHINED SURFACES </p> <p>DO NOT SCALE DRAWING</p> <p>REMOVE ALL BURRS & SHARP EDGES .010-.015</p>	<p>The data, concepts or designs contained herein are the exclusive property of Enflite, Inc. or contain the proprietary rights of others and shall not be used, disclosed, copied, duplicated or reproduced without the written consent of Enflite, Inc.</p>	<table style="width: 100%; border: none;"> <tr> <td style="width: 25%;">SIZE</td> <td style="width: 25%;">DWG NO.</td> <td style="width: 25%;">REV.</td> </tr> <tr> <td>A</td> <td>N20310</td> <td>F</td> </tr> </table>	SIZE	DWG NO.	REV.	A	N20310	F
SIZE	DWG NO.	REV.						
A	N20310	F						
<p>SCALE NONE</p>		<p>CAD FILE 20310-XX-F-F SHEET 1 OF 2</p>						



SIZE A	DWG NO. N20310	REV. F
SCALE NONE	CAD FILE 20310-XX-F-F	SHEET 2 OF 2