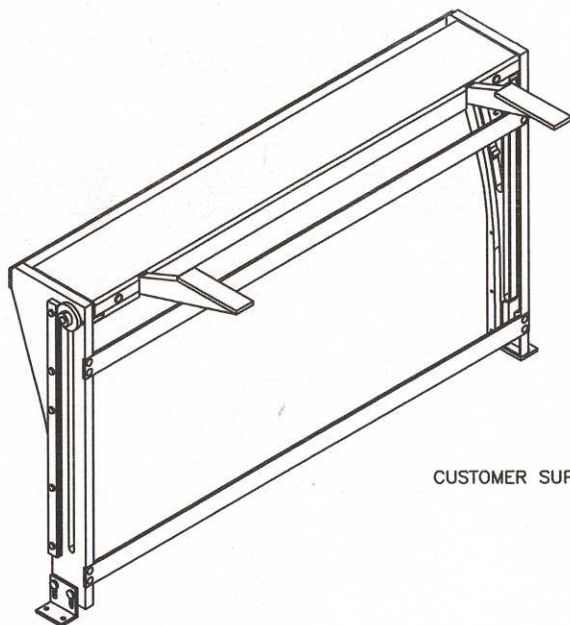


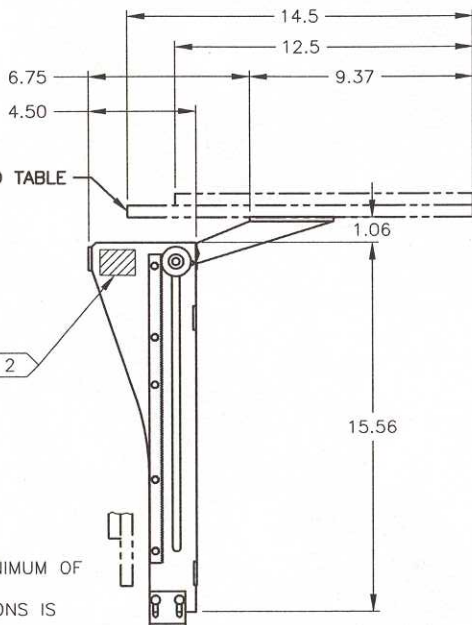
NOTES:

- FOR ADDITIONAL INFORMATION REFER TO THE OPERATION MANUAL: M22060

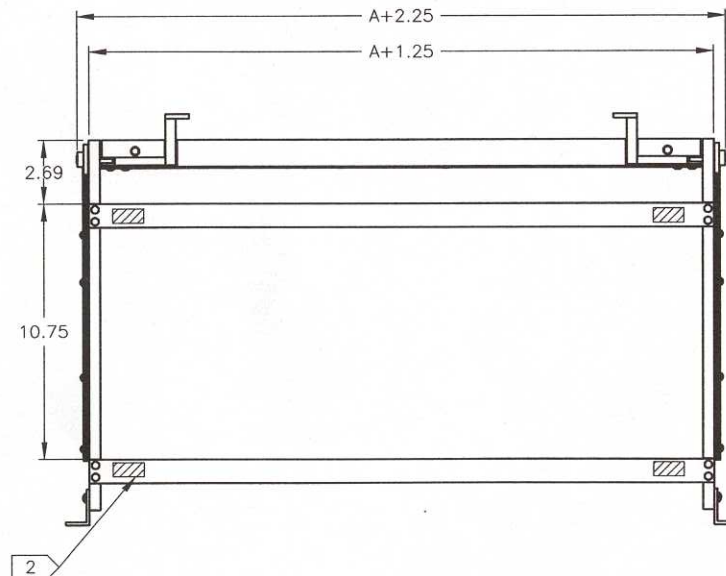
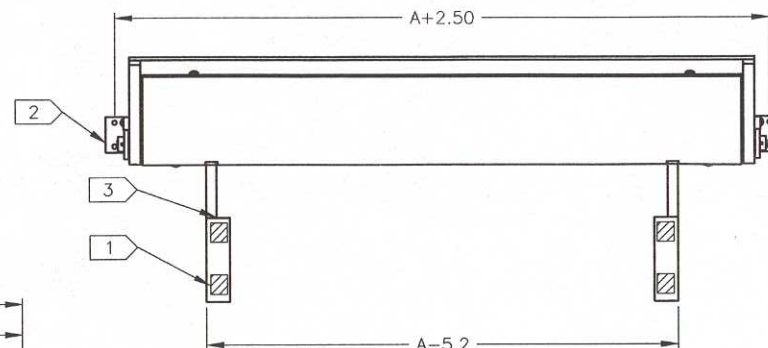
		REVISIONS	
LTR	DESCRIPTION	BY	DATE
A	INITIAL RELEASE		
B	SEE DRN N22050B	RAB	03/02/99
C	SEE DRN N22050C	RAB	03/24/99



CUSTOMER SUPPLIED TABLE



SIDE VIEW



FRONT VIEW

A = DASH NUMBER (WIDTH OF TABLE)

NOTES:

- ATTACHMENT OF THE TABLE TOP TO THE MODEL 22050 MECHANISM
 - THE TABLE TOP MUST BE FASTENED TO THE MECHANISM WITH A MINIMUM OF 4 NAS603 SCREWS AS SHOWN IN THE TOP VIEW
 - THE COMPLIANCE OF THE TABLETOP TO FEDERAL AVIATION REGULATIONS IS THE RESPONSIBILITY OF THE INSTALLER.
- ATTACHMENT OF THE MODEL 22050 TO THE AIRCRAFT;
 - MECHANISM MUST BE FASTENED TO THE AIRCRAFT STRUCTURE WITH A MINIMUM OF 4 NAS603 SCREWS. TYPICAL MOUNTING LOCATIONS ARE SHOWN HATCHED THE FRONT AND SIDE VIEWS. FASTENERS SHOULD NOT INTERFERE WITH THE OPERATION OF MECHANISM.
 - STRUCTURAL SUBSTANTIATION OF THE AIRCRAFT STRUCTURE IS THE RESPONSIBILITY OF THE INSTALLER.
 - COMPLIANCE TO APPLICABLE FEDERAL AVIATION REGULATIONS REGARDING AISLE CLEARANCE REQUIREMENTS IS THE RESPONSIBILITY OF THE INSTALLER.
- DESIGN LOADS OF THE MODEL 22050 MECHANISM.

THE MECHANISM CAN SUPPORT 260 LBS. ULTIMATE APPLIED AT 10.75 INCHES FROM THE OUTBOARD EDGE OF THE MOUNTING ARM. 3

CONVERT ULTIMATE LOAD TO AN ALLOWABLE TABLETOP WEIGHT AND ITEMS WITH THE FORMULA BELOW.

$(\text{WEIGHT OF ITEMS} + \text{WEIGHT OF TABLE TOP}) \times \text{ULTIMATE LOAD FACTOR} \leq 260$

<p style="font-size: 2em; color: blue;">Released 4/5/99</p>	DRAWN JMC 04/04/97	<p style="font-size: 0.8em;">2507 West Howard Lane Austin, Texas 78758 512 368-9994</p>
	FINISH: N/A	
UNLESS OTHERWISE SPECIFIED TOLERANCES: DECIMAL ANGULAR XX ± .01 ± 1° .XXX ± .005	MATERIAL: N/A	TITLE INSTALLATION 22050 SIDEWALL TABLE
DIMENSIONS ARE IN INCHES ALL MACHINED SURFACES $\sqrt{3}$ DO NOT SCALE DRAWING REMOVE ALL BURRS & SHARP EDGES .010-.015	The data, concepts or designs contained herein are the exclusive property of Enflite, Inc. or contain the proprietary rights of others and shall not be used, disclosed, copied, duplicated or reproduced without the written consent of Enflite, Inc.	SIZE DWG NO. REV. C N22050 C
SCALE NONE CAD FILE 22050-XX-C-C		SHEET 1 OF 1