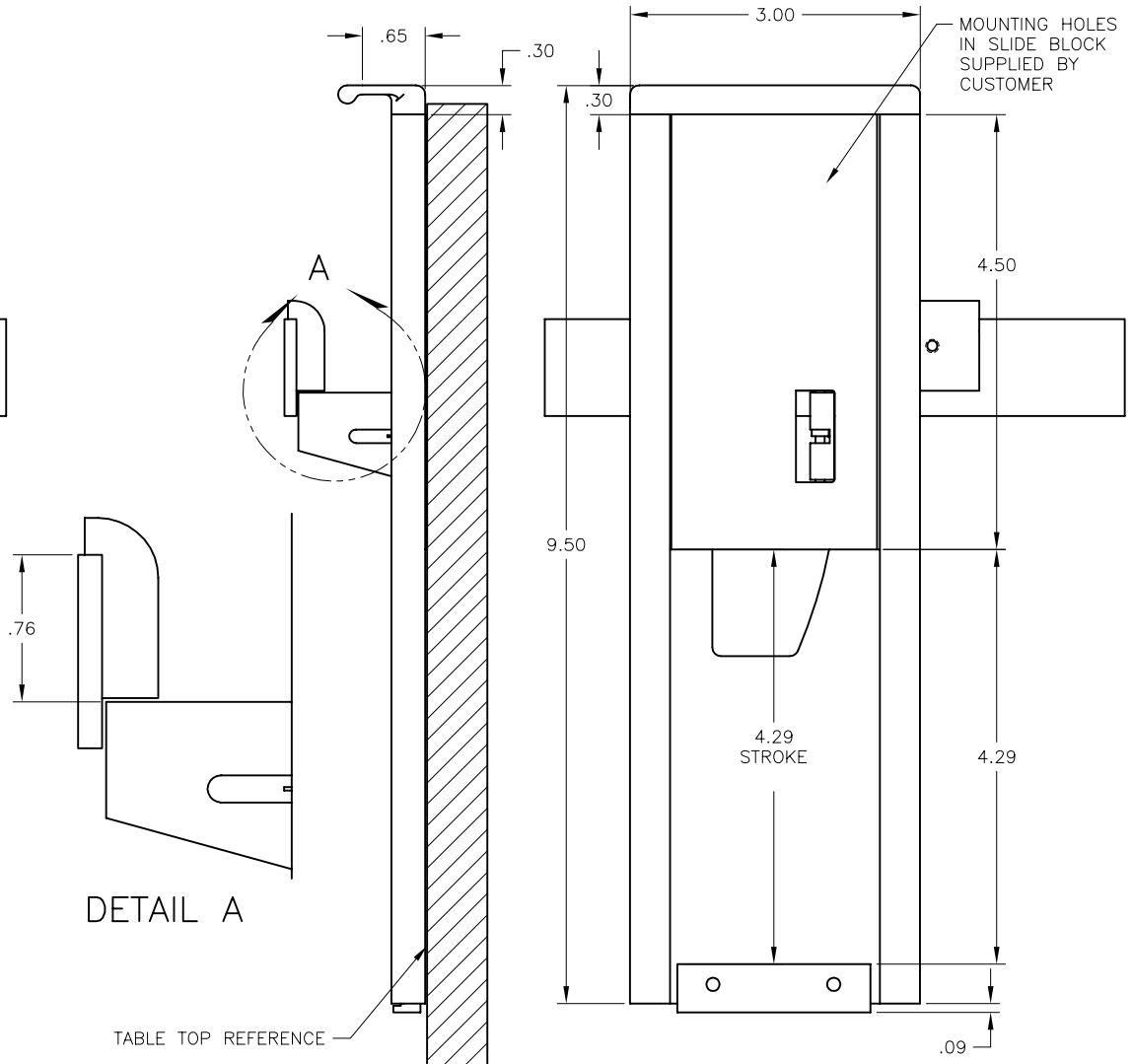
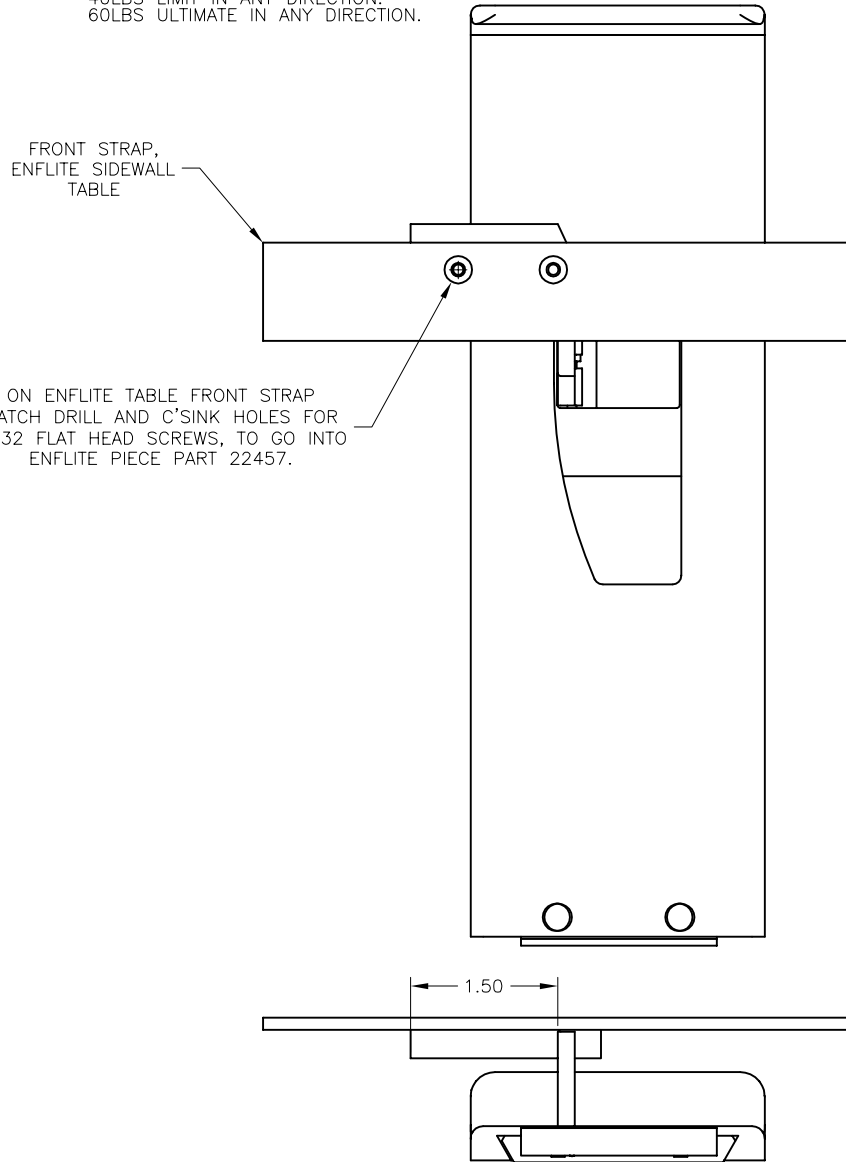


1. ATTACHMENT OF THE MODEL 22420 MECHANISM
 - A THE MECHANISM MUST BE FASTENED TO THE TABLE TOP WITH AT LEAST FOUR NAS TYPE FLAT HEAD SCREWS.
 - B THE COMPLIANCE OF THE TABLE TO FEDERAL AVIATION REGULATIONS IS THE RESPONSIBILITY OF THE INSTALLER.
LOCATE SLIDE BLOCK ON THE BOTTOM SIDE OF TABLE TOP AND MOUNT WITH 4-6 EACH #10 FLAT HEAD SCREWS.
2. DESIGN LOAD FACTORS
 - A THE FOLLOWING LOAD IS USED IN CONSIDERING THE STRUCTURAL INTEGRITY OF THE MECHANISM:
40LBS LIMIT IN ANY DIRECTION.
60LBS ULTIMATE IN ANY DIRECTION.

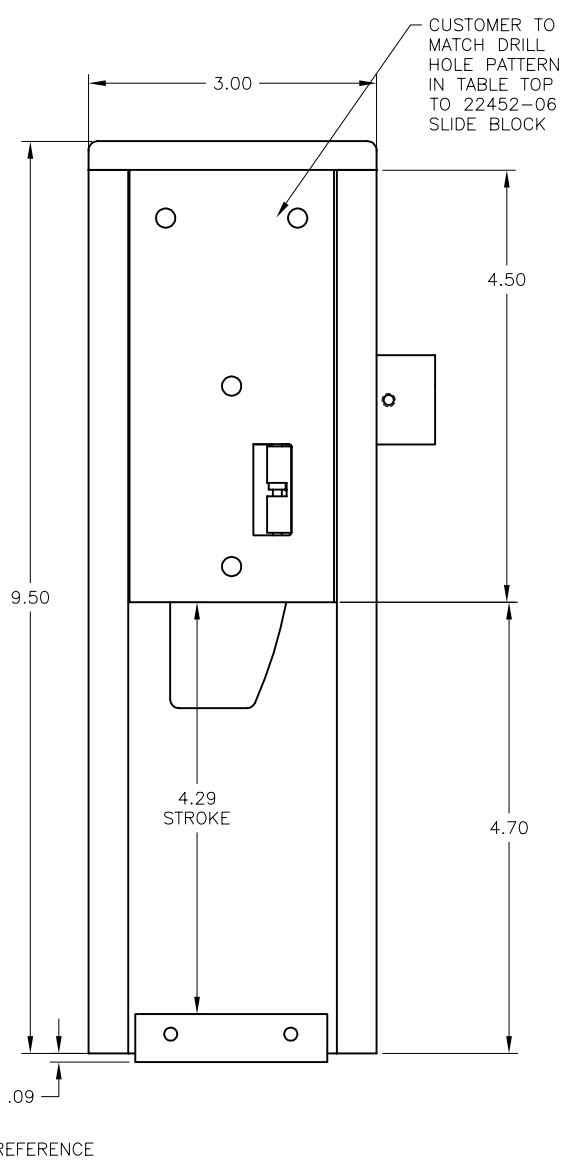
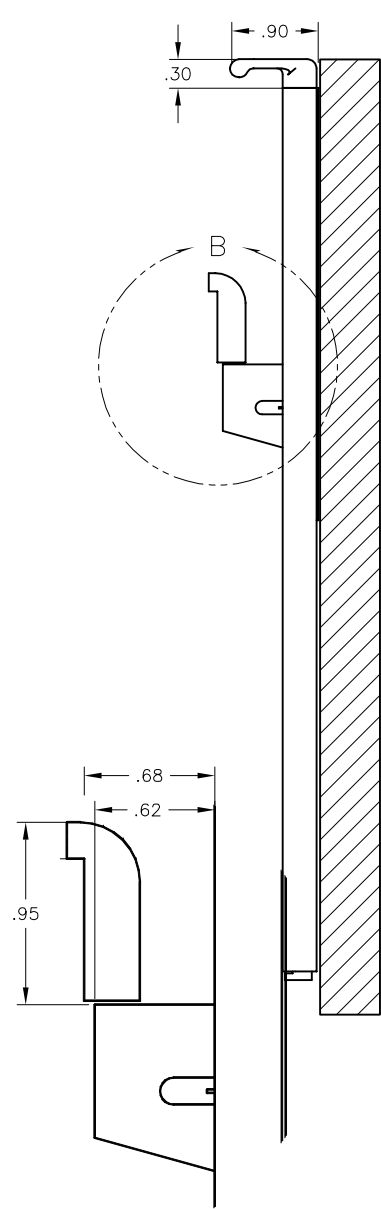
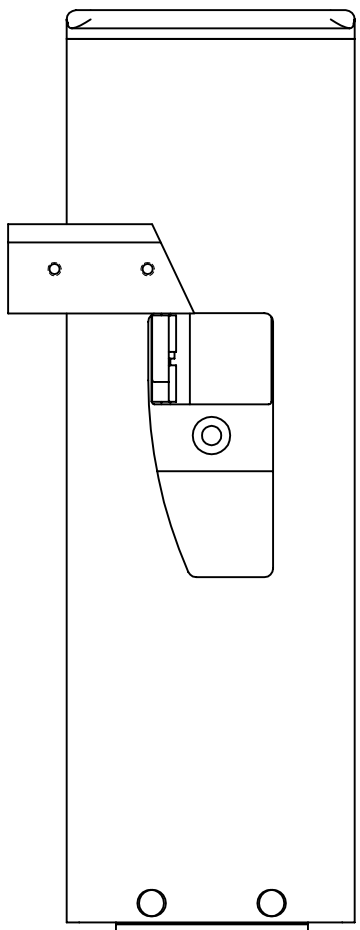


REVISIONS				
LTR	DESCRIPTION	REV BY	APPROVED	DATE
A	INITIAL RELEASE	JWS	KPW	12/08/00
B	SEE ECO N22420B	JWS	KPW	2/16/01
C	SEE ECO N22420C	THH	KPW	11/11/04
D	SEE ECO N22420D	EPW	KPE	12/14/04



INSTALLATION FOR
22420-01 SHOWN

INSPECTION CLASS	DRAWN	JWS 12/08/00			
	FINISH:	NONE			
UNLESS OTHERWISE SPECIFIED TOLERANCES: DECIMAL .XX ± .01 .XXX ± .005 ANGULAR ± 1° DIMENSIONS ARE IN INCHES ALL MACHINED SURFACES ϕ DO NOT SCALE DRAWING REMOVE ALL BURRS & SHARP EDGES .010-.015	MATERIAL:	SEE NOTE	TITLE		
			INSTALLATION, SLIDE HANDLE ASSEMBLY,	SIZE	DWG NO.
<i>The data, concepts or designs contained herein are the exclusive property of Enflite, Inc. or contain the proprietary rights of others and shall not be used, disclosed, copied, duplicated or reproduced without the written consent of Enflite, Inc.</i>			A	N22420	REV.
			SCALE	CAD FILE	SHEET
			NONE	22420-XX-D-D	1 OF 2



INSTALLATION FOR
22420-02 SHOWN

DETAIL B
SCALE 1:1



SIZE A	DWG NO. N22420	REV. D
SCALE NONE	CAD FILE 22420-XX-D-D	SHEET 2 OF 2