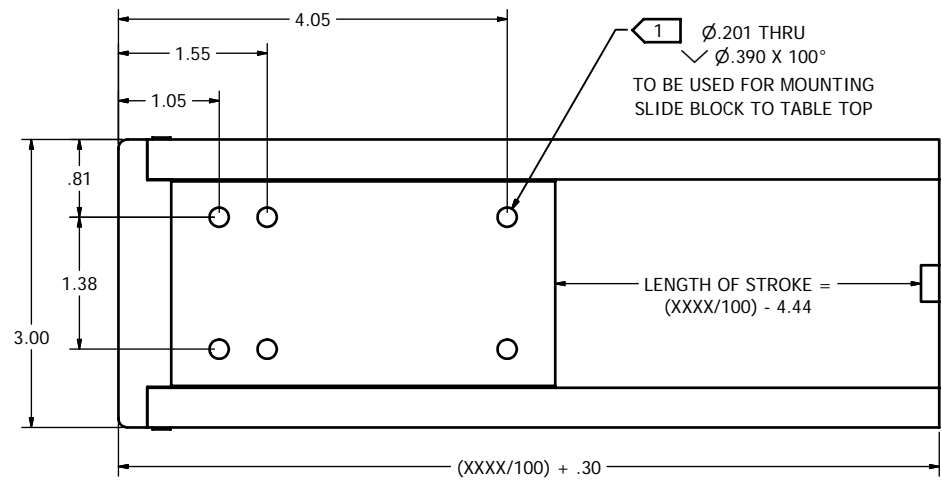
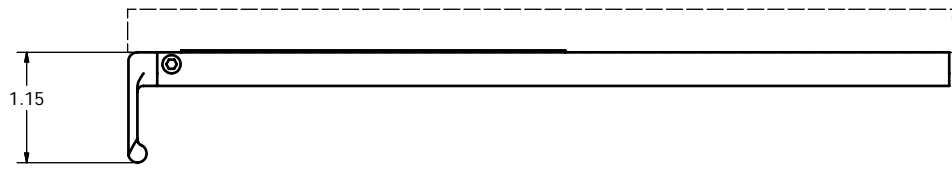


REVISIONS				
REV	DESCRIPTION	REV BY	APPROVED	DATE
A	INITIAL RELEASE			
B	SEE DRN N22425B	BJH	KPW	07/13/2000
C	SEE DRN N22425C	BJH	KET	08/15/2000
D	SEE DRN N22425D	BJH	KET	04/02/2001
E	SEE ECO N22425E	EPW	DO NOT USE	



-02 ASSY




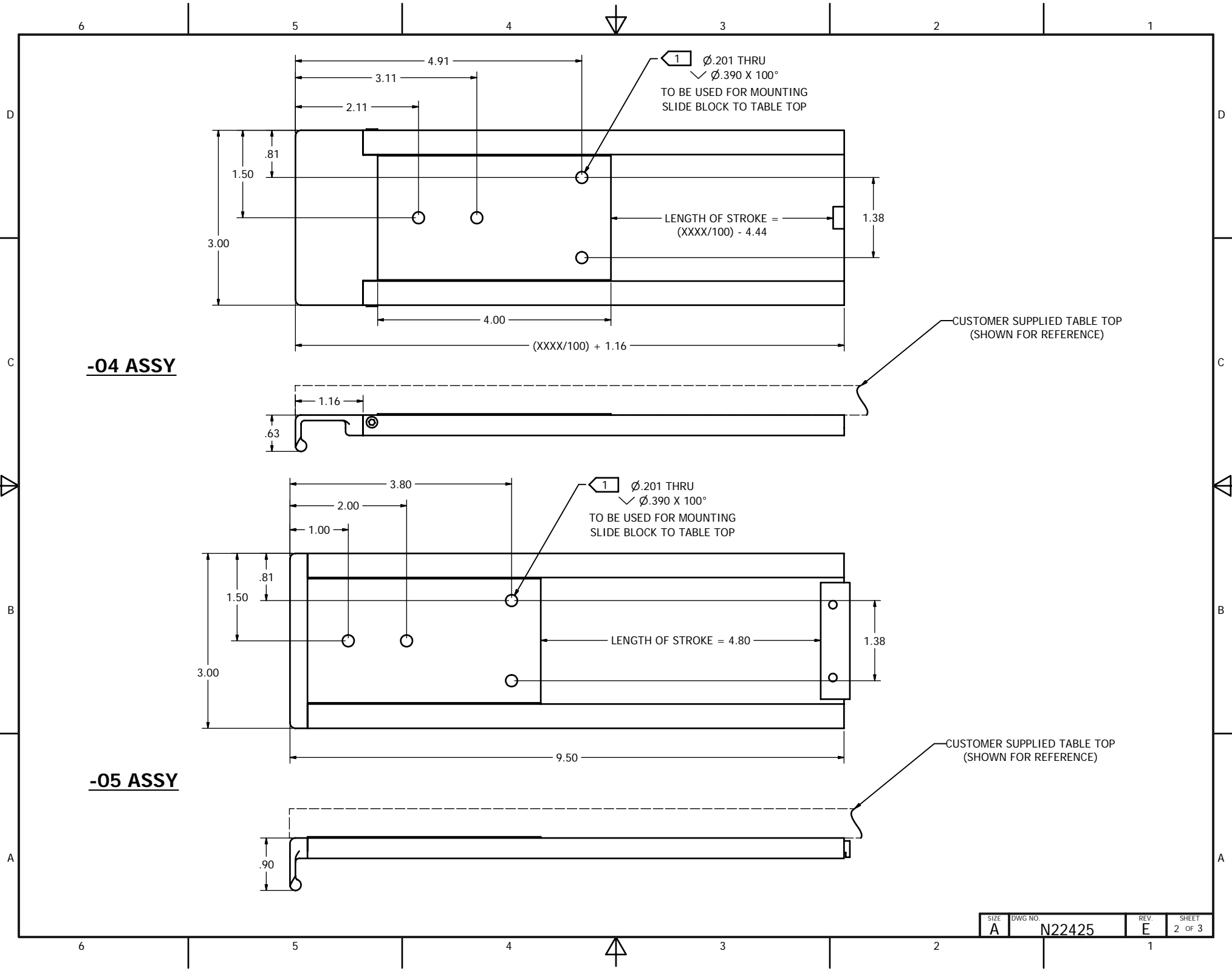
-03 ASSY

(SAME AS -02 EXCEPT AS SHOWN)

PART NUMBER DEFINITION:
 22425-XXXX-YY
 — DETERMINES BLOCK AND HANDLE P/N'S
 — DETERMINES DASH NUMBER OF SLIDE

- NOTES:
- ATTACHMENT OF THE MODEL 22425 MECHANISM:
 - THE MECHANISM SHALL BE FASTENED TO THE TABLE TOP WITH AN, MS OR NAS #10 FLAT HEAD COUNTERSUNK SCREWS AS REQUIRED.
 - THE COMPLIANCE OF THE TABLE TOP TO FEDERAL AVIATION REGULATIONS IS THE RESPONSIBILITY OF THE INSTALLER.
 - DESIGN LOAD FACTORS:
 - THE FOLLOWING LOAD IS USED IN CONSIDERING THE STRUCTURAL INTEGRITY OF THE MECHANISM:
 - 40LBS LIMIT IN ANY DIRECTION.
 - 60LBS ULTIMATE IN ANY DIRECTION.

INSPECTION CLASS C	DRAWN: BJH	DATE: 2/11/2000	 Georgetown, Texas
UNLESS OTHERWISE SPECIFIED	FINISH: NONE		
1) ALL SURFACES PER EPS-121-01-D	MATERIAL: NONE		TITLE
2) REMOVE ALL BURRS & SHARP EDGES .010-.015	The data, concepts or designs contained herein are the exclusive property of Entilite, Inc. or contain the proprietary rights of others and shall not be used, disclosed, copied, duplicated or reproduced without the written consent of Entilite, Inc.		INSTALLATION SLIDE HANDLE ASSEMBLY
3) DIMENSIONS ARE IN INCHES	SIZE	DWG NO.	REV.
4) DO NOT SCALE DRAWING	A	N22425	E
5) TOLERANCES:	SHEET		1 OF 3
DECIMAL .XX ± .04			
ANGULAR .XXX ± .010			
6) ALL MACHINED SURFACES 63/√			



SIZE	DWG NO.	REV.	SHEET
A	N22425	E	2 OF 3

6 5 4 3 2 1

D

D

C

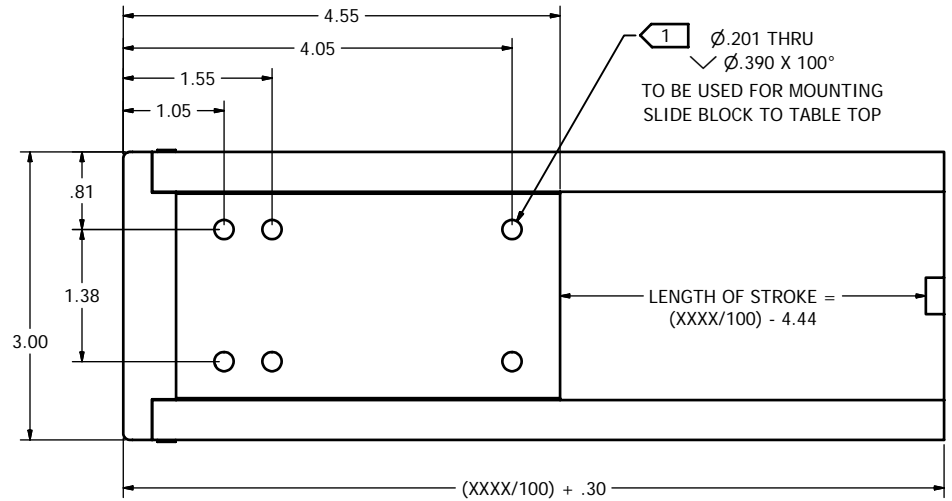
C

B

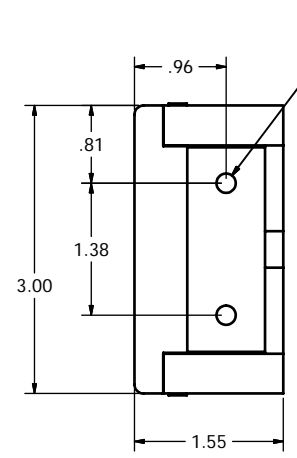
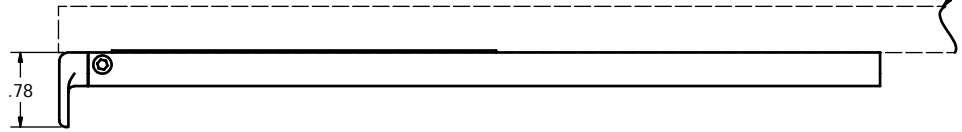
B

A

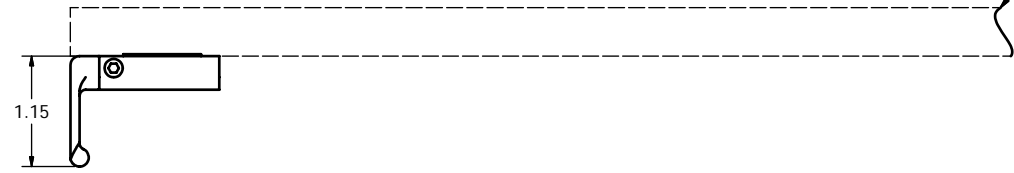
A



-06 ASSY



-07 ASSY



SIZE	DWG NO.	REV.	SHEET
A	N22425	E	3 OF 3

6 5 4 3 2 1