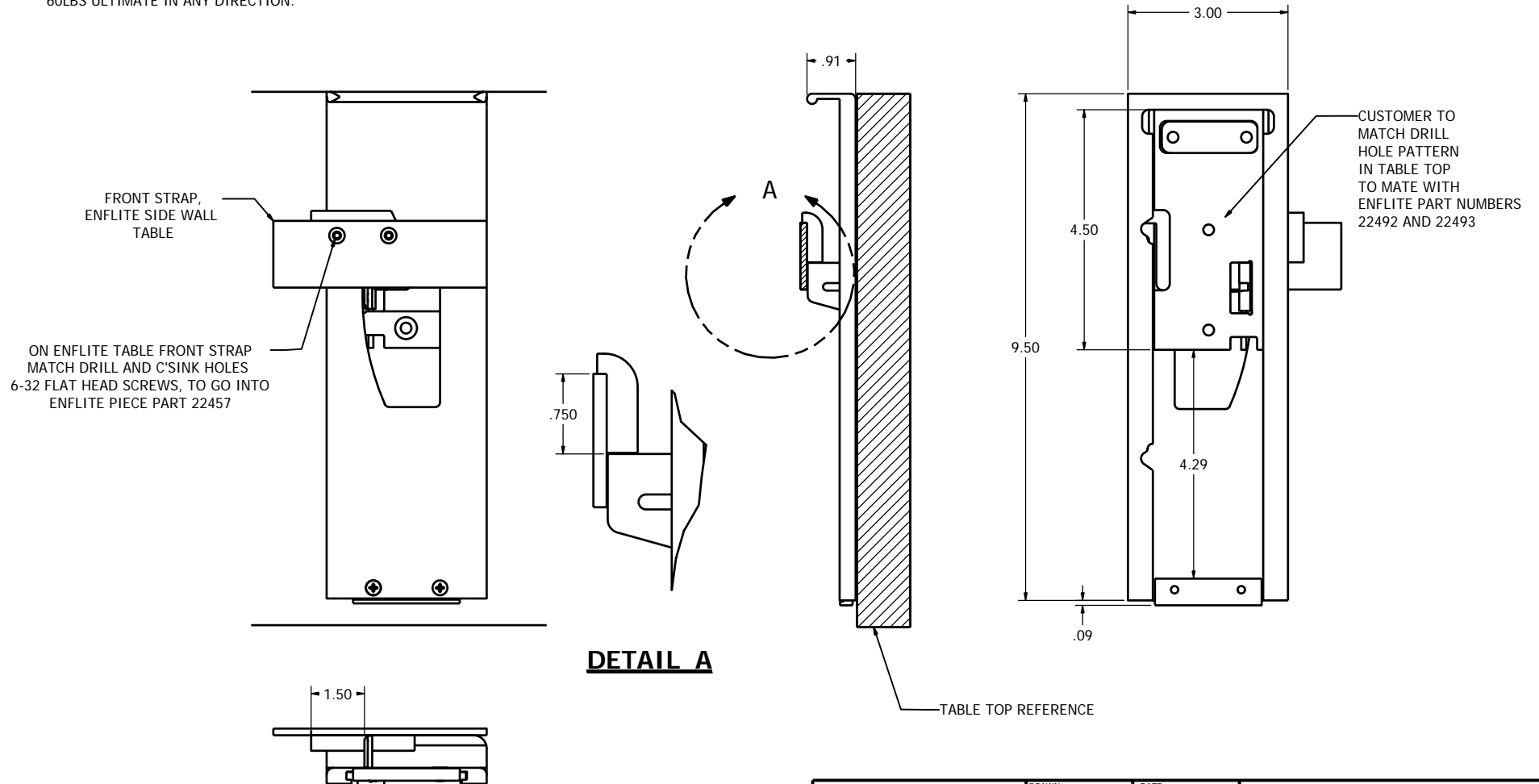



1. ATTACHMENT OF THE MODEL 220490 MECHANISM
 - A THE MECHANISM MUST BE FASTENED TO THE TABLE TOP WITH AT LEAST FOUR NAS TYPE FLAT HEAD SCREWS.
 - B THE COMPLIANCE OF THE TABLE TO FEDERAL AVIATION REGULATIONS IS THE RESPONSIBILITY OF THE INSTALLER. LOCATE SLIDE BLOCK ON THE BOTTOM SIDE OF TABLE TOP AND MOUNT WITH 4 TO 6 EACH #10 FLAT HEAD SCREWS.
2. DESIGN LOAD FACTORS
 - A THE FOLLOWING LOAD IS USED IN CONSIDERING THE STRUCTURAL INTEGRITY OF THE MECHANISM:
 - 40LBS LIMIT IN ANY DIRECTION.
 - 60LBS ULTIMATE IN ANY DIRECTION.



DETAIL A

INSPECTION CLASS C		DRAWN: MSH	DATE: 1/15/2008	 Georgetown, Texas	
UNLESS OTHERWISE SPECIFIED		FINISH: NONE			
1) ALL SURFACES PER EPS-121-01-D 2) REMOVE ALL BURRS & SHARP EDGES .010-.015 3) DIMENSIONS ARE IN INCHES 4) DO NOT SCALE DRAWING 5) TOLERANCES: DECIMAL ANGULAR .XX ± .04 ± 1° .XXX ± .01		MATERIAL: NONE		The data, concepts or designs contained herein are the exclusive property of Enflite, Inc. or contain the proprietary rights of others and shall not be used, disclosed, copied, duplicated or reproduced without the written consent of Enflite, Inc.	
6) ALL MACHINED SURFACES 63/√		SIZE A DWG NO. N22490			