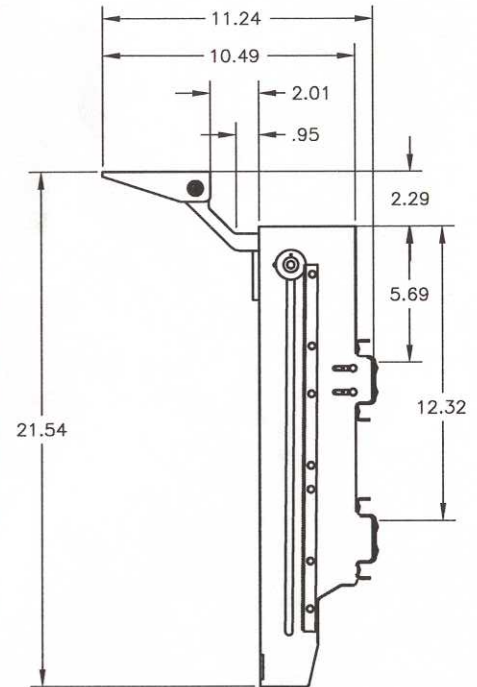
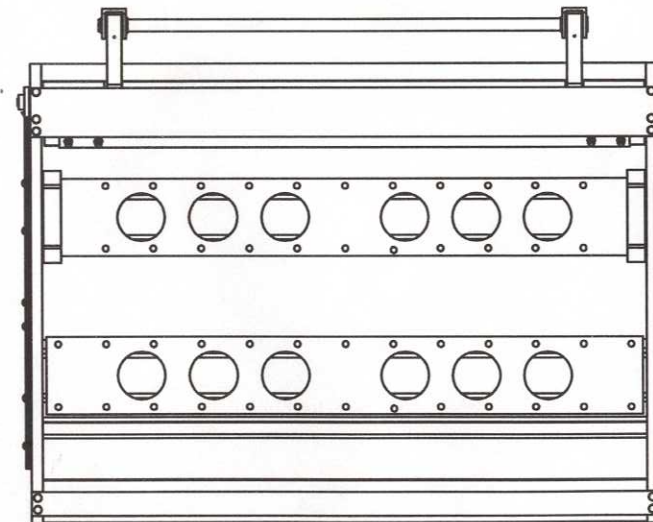
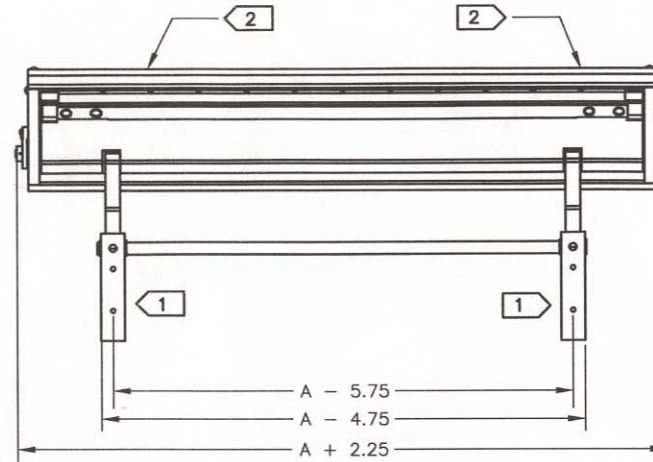


REVISIONS		REV	APPROVED
LTR	DESCRIPTION		
A	INITIAL RELEASE		



1 ATTACHMENT OF TABLE TOP TO THE MODEL 22500 MECHANISM

- A. THE TABLE TOP MUST BE FASTENED TO THE MECHANISM WITH FOUR NAS603 SCREWS (OR EQUIVALENT), AS SHOWN IN THE TOP VIEW.
- B. THE COMPLIANCE OF THE TABLE TOP TO FAR'S IS THE RESPONSIBILITY OF THE INSTALLER.

2 ATTACHMENT OF MODEL 22500 TO AIRCRAFT STRUCTURE

- A. THE WEIGHT OF THE MECHANISM/TABLE TOP ASSEMBLY MUST NOT EXCEED 25 LBS.
- B. MECHANISM/TABLE TOP MUST BE FASTENED TO THE AIRCRAFT STRUCTURE WITH FOUR (MINIMUM) NAS603 SCREWS (OR EQUIVALENT) WITH THE FASTENING ZONES SHOWN.
- C. THE ABILITY OF THE AIRCRAFT STRUCTURE TO RESIST THE LOADS OF THE MECHANISM/TABLE TOP, UNDER THE DESIGN LOAD FACTORS (SEE NOTE 3) IS THE RESPONSIBILITY OF THE INSTALLER.
- D. COMPLIANCE TO FAR'S REGARDING AISLE CLEARANCE REQUIREMENTS IS THE RESPONSIBILITY OF THE INSTALLER.

3. DESIGN LOAD FACTORS

- A. THE FOLLOWING LOAD FACTORS WERE USED IN CONSIDERING THE STRUCTURAL INTEGRITY OF THE MECHANISM.
 FORWARD: 9.00g UP: 6.75g
 SIDE: 3.00g DOWN: 9.90g
 THESE LOAD FACTORS MEET OR EXCEED THE REQUIREMENTS OF FAR PART 25.561
- B. TABLE MUST BE IN THE STOWED POSITION FOR TAKEOFF AND LANDING AND MUST BE PLACARDED AS SUCH.

A = TABLE WIDTH

RELEASED 2/26/98	MATERIAL:	N/A	INITIAL PROJECT	 2507 West Howard Lane Austin, Texas 78758 512 388-9994				
	FINISH:	N/A	DRAWN				DKF 12/22/97	
	UNLESS OTHERWISE SPECIFIED TOLERANCES:			CHECK	1-15-98			
	DECIMAL	.XX ± .01	ANGULAR	APPROVAL	1/15/98			
.XXX ± .005			The data, concepts or designs contained herein are the exclusive property of Enflite, Inc. or contain the proprietary rights of others and shall not be used, disclosed, copied, duplicated or reproduced without the written consent of Enflite, Inc.					
DIMENSIONS ARE IN INCHES AND INCLUDE APPLIED FINISH			SIZE	C	DWG NO.	N22500	REV.	A
ALL MACHINED SURFACES $\pm .01$			SCALE	N/A	CAD FILE	N22500A	SHEET	1 OF 1
DO NOT SCALE DRAWING								
REMOVE ALL BURRS & SHARP EDGES .010-.015								