

NOTES:

1. TABLE TOP INFORMATION

- A) THE COMPLIANCE OF THE INSTALLATION OF THE TABLE TOP TO FEDERAL REGULATIONS IS THE RESPONSIBILITY OF THE INSTALLER.
- B) THE SIZE AND LOCATION OF THE TABLETOP MOUNTING HOLES ARE AS INDICATED.

2. AIRCRAFT ATTACHMENT INFORMATION

- A) STRUCTURAL SUBSTANTIATION OF THE AIRCRAFT STRUCTURE IS THE RESPONSIBILITY OF THE INSTALLER.

2B ATTACH MECHANISM WITH 3 EACH #10 X 100° COUNTERSINK SCREWS AT LOCATIONS INDICATED. SEE SHEET 2 FOR LOCATIONS.

- C) COMPLIANCE TO APPLICABLE FEDERAL AVIATION REGULATIONS REGARDING AISLE CLEARANCE REQUIREMENTS IS THE RESPONSIBILITY OF THE INSTALLER.

3. MECHANICAL INFORMATION

- A) WEIGHT OF THE MECHANISM 3.70 LBS.

- B) THE LOCATION OF THE CENTER OF GRAVITY IN THE STOWED POSITION IS AT X=-1.69, Y=8.32, Z=-2.54. THE CENTER OF GRAVITY IN THE DEPLOYED POSITION IS LOCATED AT X=5.51, Y=2.85, Z=4.31. THE ORIGIN IS AT THE CENTER OF THE RADIUS OF THE BASE PLATE AND FLUSH WITH THE MOUNTING SURFACE.

- C) THE MECHANISM CAN SUPPORT AN ULTIMATE LOAD OF 180 LBS APPLIED 8.18 INCHES FROM THE INBOARD FACE OF THE BASE PLATE. SEE STRESS REPORT R50100.

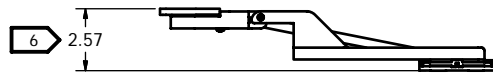
CONVERT ULTIMATE LOAD TO AN ALLOWABLE TABLE TOP WEIGHT WITH THE FOLLOWING FORMULA:
 (WEIGHT OF ITEMS + WEIGHT OF TABLE TOP) X ULTIMATE LOAD FACTOR MUST BE LESS THAN OR EQUAL TO 180 LBS.

4 MAX TABLETOP WIDTH IS 13.00.

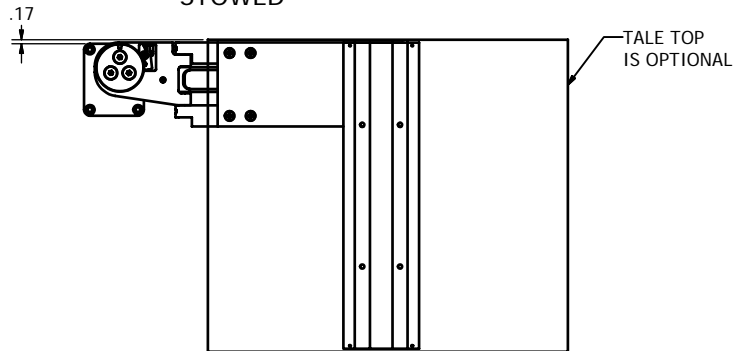
- 5. A -01 LEFT AND -02 RIGHT SLIDE AWAY FROM OCCUPANT.
 A -02 LEFT AND -01 RIGHT SLIDE TOWARDS OCCUPANT.
 SEE SHEET 2 FOR INSTALLATION LOCATIONS.

6 THIS DIMENSION IS FROM BASE PLATE TO TABLETOP MOUNTING SURFACE. MINIMUM WIDTH REQUIRED OF CABINET IS CALCULATED BY:
 (2.57 + TABLETOP THICKNESS = MIN WIDTH OF CASING).

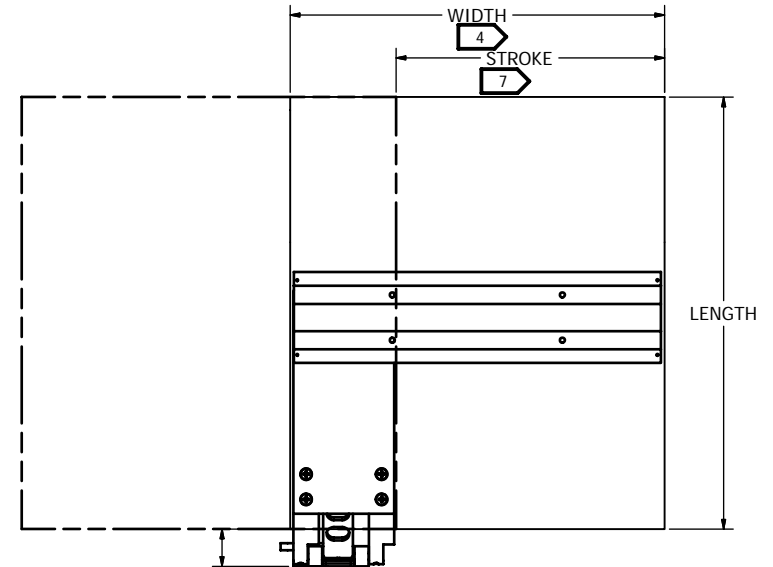
7 STROKE = (WIDTH - 3.58")



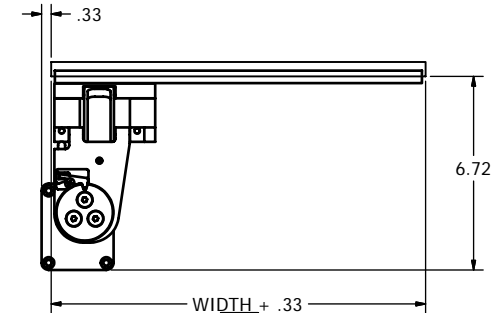
TOP VIEW
STOWED



REVISIONS				
REV	DESCRIPTION	REV BY	APPROVED	DATE
A	INITIAL RELEASE	AJM	VHT	08/29/2005
B	SEE ECO N50130	EPW	DO NOT USE	



TOP VIEW
DEPLOYED



SIDE VIEW
DEPLOYED

ODD DASH NUMBER SHOWN
EVEN DASH NUMBER OPPOSITE

INSPECTION CLASS C	DRAWN: AJM	DATE: 8/25/2005
UNLESS OTHERWISE SPECIFIED	FINISH: NONE	
1) ALL SURFACES PER EPS-121-01-D	MATERIAL: N/A	
2) REMOVE ALL BURRS & SHARP EDGES .010-.015		
3) DIMENSIONS ARE IN INCHES		
4) DO NOT SCALE DRAWING		
5) TOLERANCES:		
DECIMAL .XX ± .04	ANGULAR ± 1°	
.XXX ± .010		
6) ALL MACHINED SURFACES 63/		

Entilite, Inc.
 Georgetown, Texas

TITLE
PIVOT TABLE W/ SLIDE AND HIGH RISE

SIZE A	DWG NO. N50130	REV. B	SHEET 1 OF 2
--------	----------------	--------	--------------

The data, concepts or designs contained herein are the exclusive property of Entilite, Inc. or contain the proprietary rights of others and shall not be used, disclosed, copied, duplicated or reproduced without the written consent of Entilite, Inc.

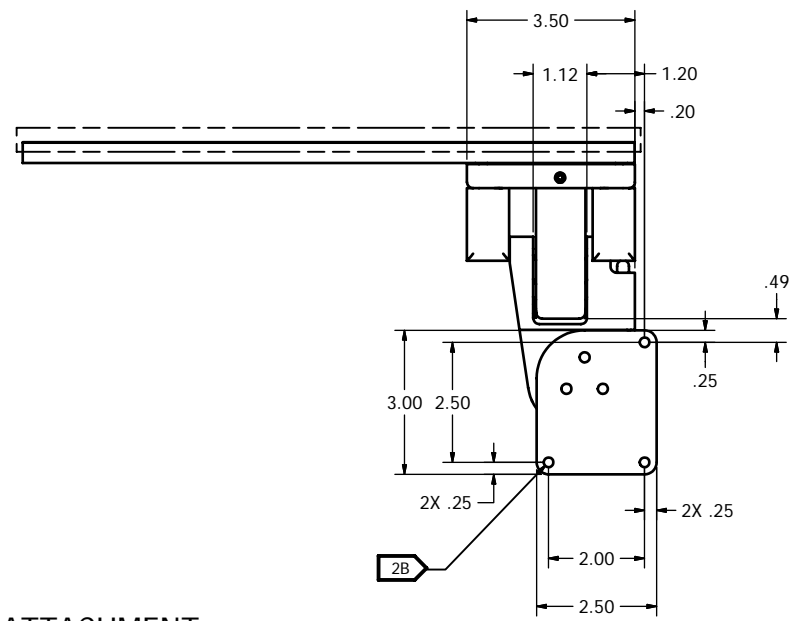
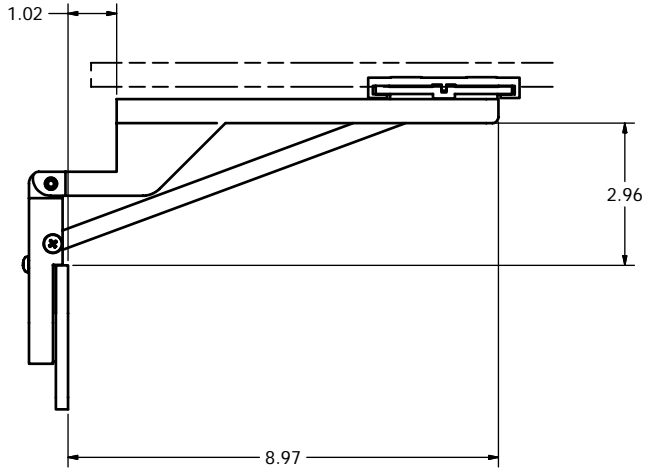
6 5 4 3 2 1

D

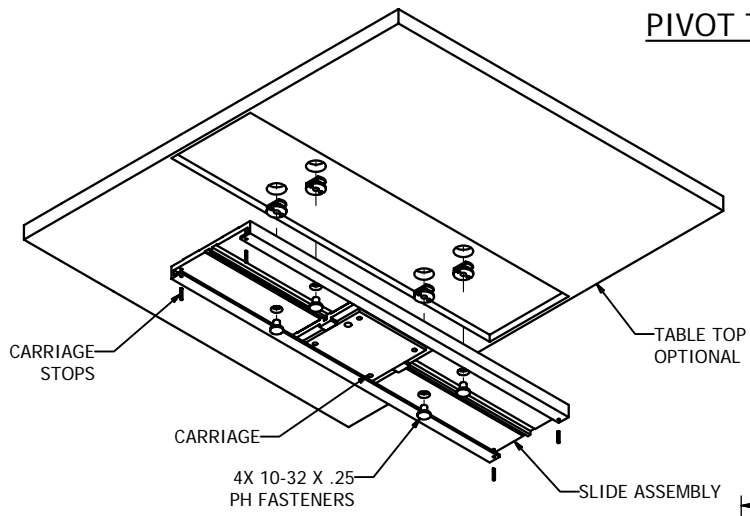
C

B

A

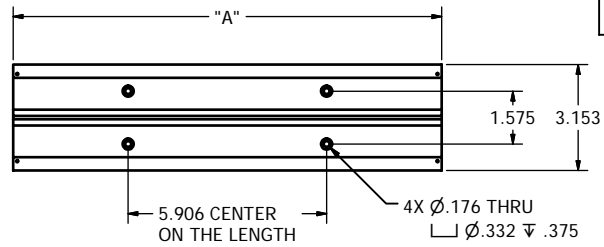


PIVOT TABLE HOLE ATTACHMENT LOCATIONS

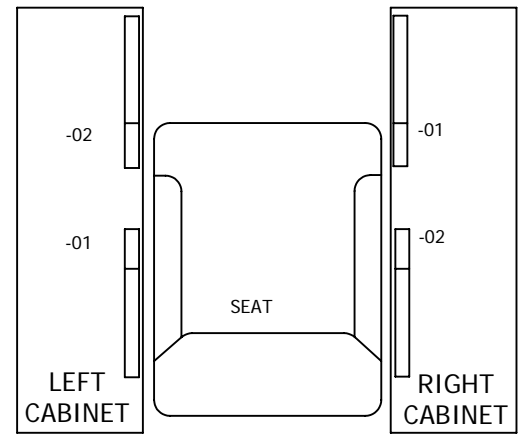


SLIDE TO TABLE TOP ATTACHMENT

PIVOT TABLE ASSY	DIM "A"
-01 AND -02	12.75
-03 AND -04	8.88



STANDARD HOLE LOCATIONS
*CUSTOM LOCATIONS CAN BE PROVIDED



INSTALLATION LOCATIONS
SEE NOTE 5

SIZE A	DWG NO. N50130	REV. B
SCALE NONE	CAD FILE N50130.idw	SHEET 2 OF 2

6 5 4 3 2 1