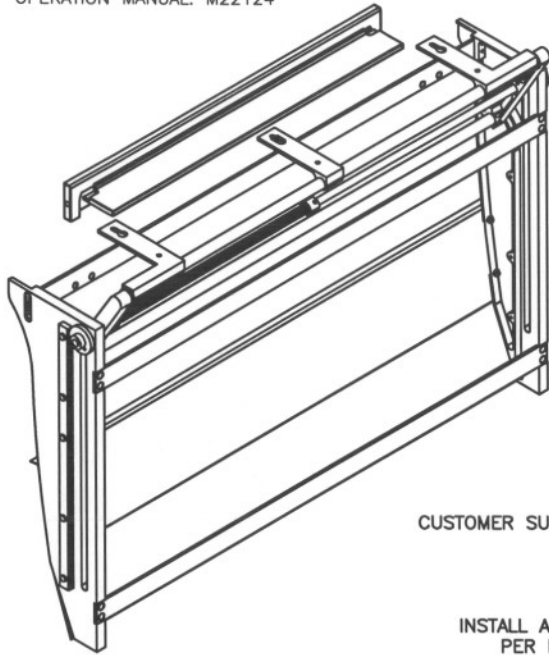


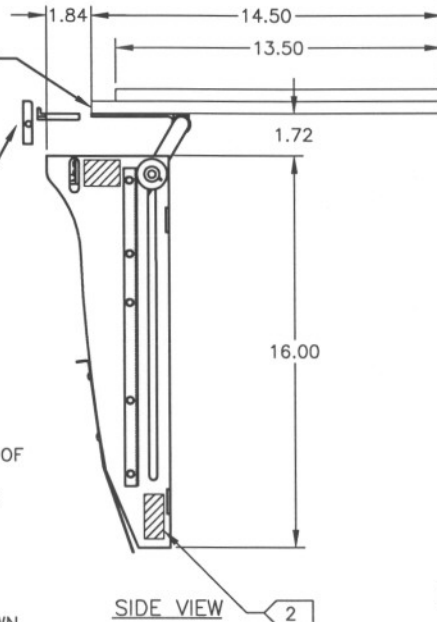
NOTES:

- FOR ADDITIONAL INFORMATION REFER TO THE OPERATION MANUAL: M22124



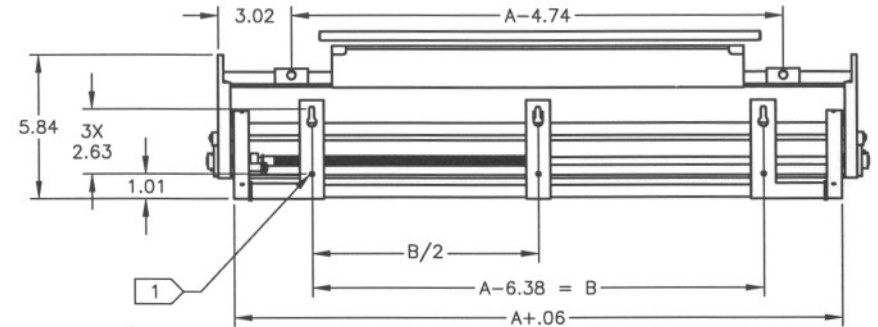
CUSTOMER SUPPLIED TABLE TOP

INSTALL ANGLE AND STOP PER DRAWING 00090.

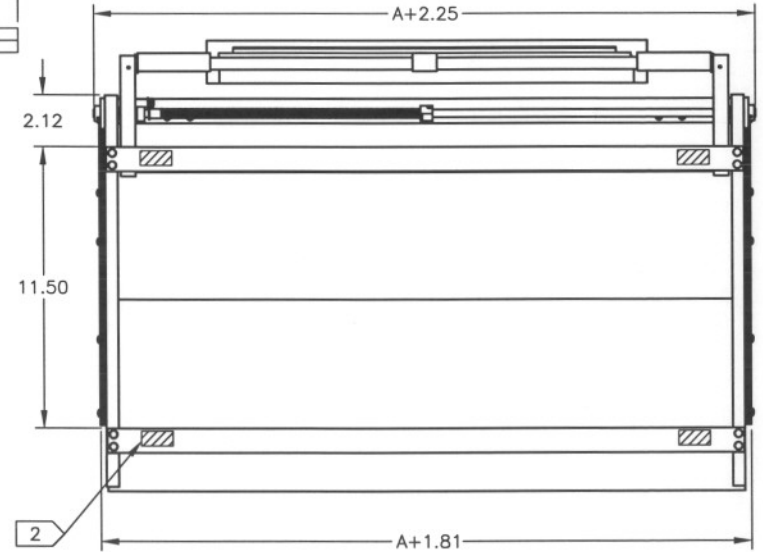


SIDE VIEW

REVISIONS				
LTR	DESCRIPTION	REV BY	APPROVED	DATE
A	INITIAL RELEASE	RAB	KPW	2/10/99
B	SEE DRN N52124B	RAB		2/12/99
C	SEE DRN N52124C	DKF		4/2/99
D	SEE ECO N52124D	JWS	KPW	8/1/01
E	SEE ECO N52124E	DAZ	KET	1/2/02
F	SEE ECO N52124F	KPE	KET	5/28/03



TOP VIEW



FRONT VIEW

A = DASH NUMBER (WIDTH OF TABLE)

NOTES:

- ATTACHMENT OF THE TABLE TOP TO THE MODEL 52124 MECHANISM

- THE TABLE TOP MUST BE FASTENED TO THE MECHANISM WITH A MINIMUM OF 6 NAS603 SCREWS AS SHOWN IN THE TOP VIEW
- THE COMPLIANCE OF THE TABLETOP TO FEDERAL AVIATION REGULATIONS IS THE RESPONSIBILITY OF THE INSTALLER.

- ATTACHMENT OF THE MODEL 52124 TO THE AIRCRAFT;

- MECHANISM MUST BE FASTENED TO THE AIRCRAFT STRUCTURE WITH A MINIMUM OF 4 NAS603 SCREWS. TYPICAL MOUNTING LOCATIONS ARE SHOWN HATCHED, IN THE FRONT AND SIDE VIEWS. FASTENERS SHOULD NOT INTERFERE WITH THE OPERATION OF MECHANISM.
- STRUCTURAL SUBSTANTIATION OF THE AIRCRAFT STRUCTURE IS THE RESPONSIBILITY OF THE INSTALLER.
- COMPLIANCE TO APPLICABLE FEDERAL AVIATION REGULATIONS REGARDING AISLE CLEARANCE REQUIREMENTS IS THE RESPONSIBILITY OF THE INSTALLER.

- DESIGN LOADS OF THE MODEL 52124 MECHANISM.

THE MECHANISM CAN SUPPORT 145 LBS. ULTIMATE APPLIED AT 12 INCHES FROM THE INBOARD FACE OF THE SIDE PLATES.

CONVERT ULTIMATE LOAD TO AN ALLOWABLE TABLETOP WEIGHT AND ITEMS WITH THE FORMULA BELOW.

$(\text{WEIGHT OF ITEMS} + \text{WEIGHT OF TABLE TOP}) \times \text{ULTIMATE LOAD FACTOR} \leq 145$

<p style="font-size: 2em; font-family: cursive;">Released</p> <p>INSPECTION CLASS</p> <p>UNLESS OTHERWISE SPECIFIED TOLERANCES:</p> <table style="width: 100%; border: none;"> <tr> <td style="text-align: center;">DECIMAL</td> <td style="text-align: center;">ANGULAR</td> </tr> <tr> <td style="text-align: center;">.XX ± .01</td> <td style="text-align: center;">± 1'</td> </tr> <tr> <td style="text-align: center;">.XXX ± .005</td> <td></td> </tr> </table> <p>DIMENSIONS ARE IN INCHES</p> <p>ALL MACHINED SURFACES \sqrt{v}</p> <p>DO NOT SCALE DRAWING</p> <p>REMOVE ALL BURRS & SHARP EDGES .010--.015</p>	DECIMAL	ANGULAR	.XX ± .01	± 1'	.XXX ± .005		<p>DRAWN: RAB 2/10/99</p> <p>FINISH: N/A</p>	<p style="font-size: 1.5em; font-family: cursive;">Enflite, Inc.</p> <p style="font-size: 0.8em;">Austin, Texas</p>
	DECIMAL	ANGULAR						
.XX ± .01	± 1'							
.XXX ± .005								
<p>MATERIAL: N/A</p> <p><small>The data, concepts or designs contained herein are the exclusive property of Enflite, Inc. or contain the proprietary rights of others and shall not be used, disclosed, copied, duplicated or reproduced without the written consent of Enflite, Inc.</small></p>	<p>TITLE: INSTALLATION 52124</p> <table style="width: 100%; border: none;"> <tr> <td style="font-size: 0.8em;">SIZE: A</td> <td style="font-size: 0.8em;">DWG NO.: N52124</td> <td style="font-size: 0.8em;">REV.: F</td> </tr> <tr> <td style="font-size: 0.8em;">SCALE: NONE</td> <td style="font-size: 0.8em;">CAD FILE: 52124-XX-E-F</td> <td style="font-size: 0.8em;">SHEET 1 OF 1</td> </tr> </table>	SIZE: A	DWG NO.: N52124	REV.: F	SCALE: NONE	CAD FILE: 52124-XX-E-F	SHEET 1 OF 1	
SIZE: A	DWG NO.: N52124	REV.: F						
SCALE: NONE	CAD FILE: 52124-XX-E-F	SHEET 1 OF 1						