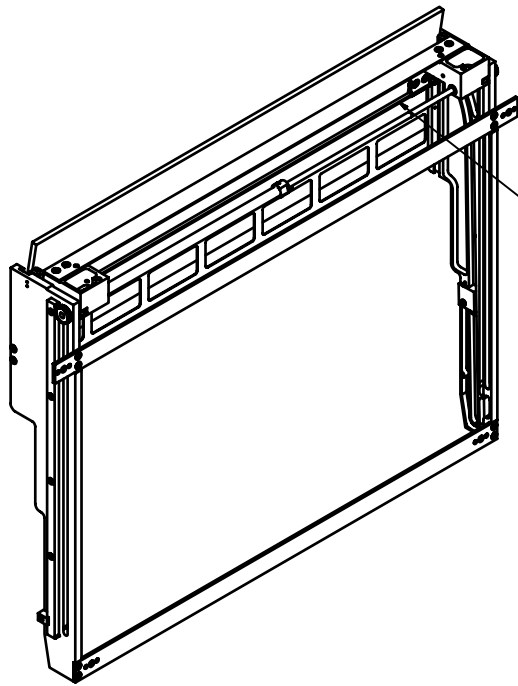
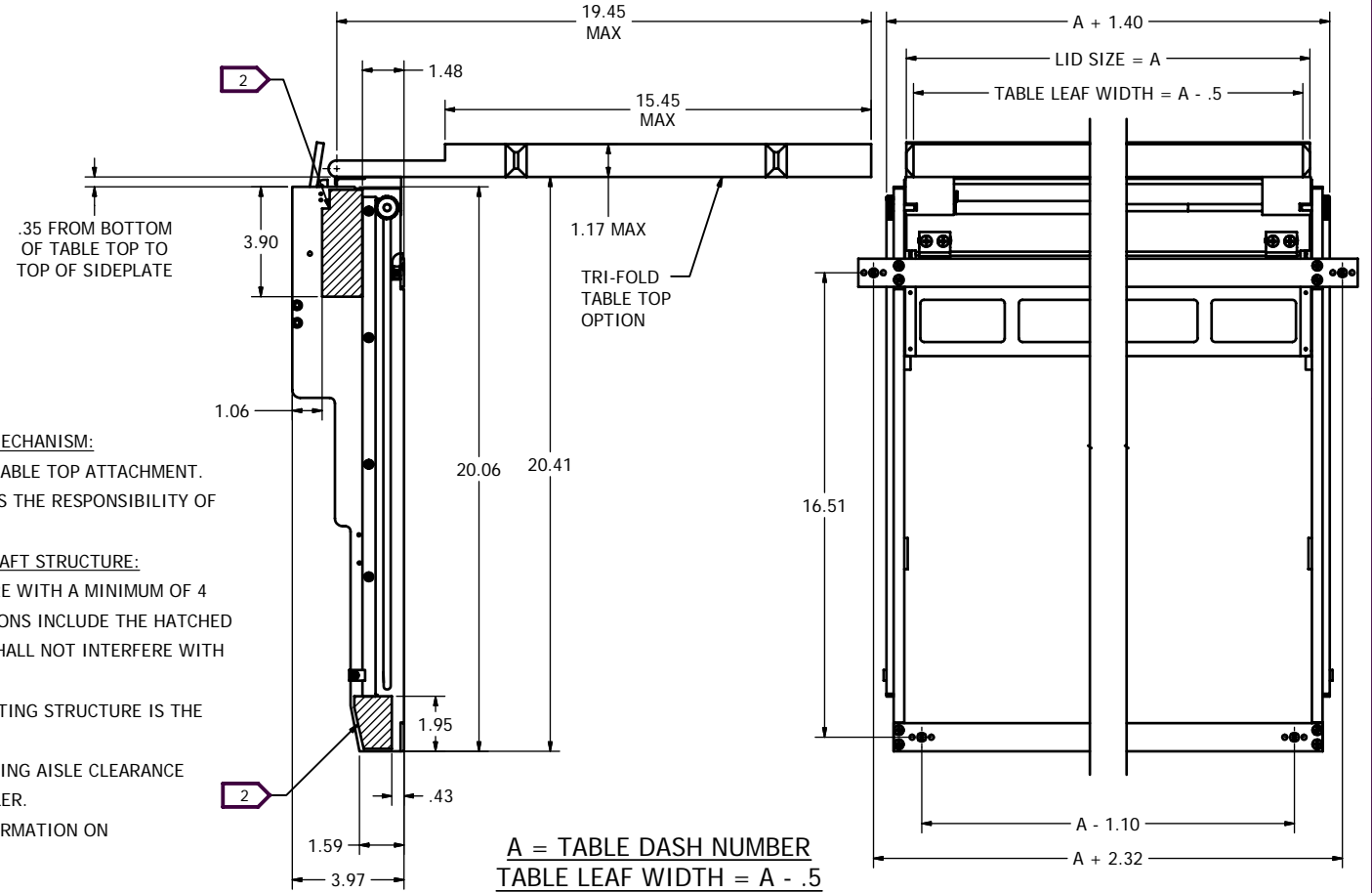
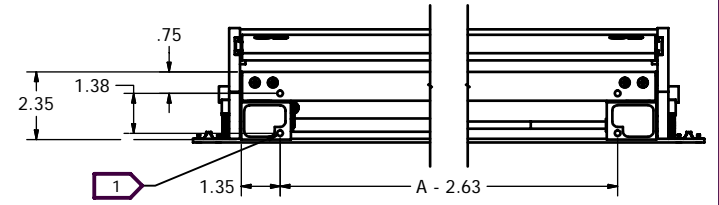


REVISIONS				
REV	DESCRIPTION	REV BY	APPROVED	DATE
D	SEE ECO 54475D	MWI		DO NOT USE



SHIPPING ROD TO BE REMOVED AFTER FINISHED LID IS REINSTALLED.



NOTES:

ATTACHMENT OF THE TABLE TOP TO THE MODEL 54475 MECHANISM:

- 1 A) FOUR DIAMETER .201 THRU HOLES ARE PROVIDED FOR TABLE TOP ATTACHMENT.
- B) COMPLIANCE OF THE TABLE TOP TO FAA REGULATIONS IS THE RESPONSIBILITY OF THE INSTALLER.


ATTACHMENT OF THE MODEL 54475 TABLE TO THE AIRCRAFT STRUCTURE:

- 2 A) TABLE SHALL BE FASTENED TO THE AIRCRAFT STRUCTURE WITH A MINIMUM OF 4 AN, MS OR NAS FASTENERS. TYPICAL MOUNTING LOCATIONS INCLUDE THE HATCHED AREAS REFERENCED ON THE SIDE PLATES. FASTENERS SHALL NOT INTERFERE WITH THE OPERATION OF THE MECHANISM.
- B) STRUCTURAL SUBSTANTIATION OF THE AIRCRAFT MOUNTING STRUCTURE IS THE RESPONSIBILITY OF THE INSTALLER.
- C) COMPLIANCE TO APPLICABLE FAA REGULATIONS REGARDING AISLE CLEARANCE REQUIREMENTS IS THE RESPONSIBILITY OF THE INSTALLER.
- D) SEE OPERATION MANUAL M54475 FOR ADDITIONAL INFORMATION ON MECHANISM OPERATION AND MAINTENANCE.

3. DESIGN LOAD FACTORS:

- A) THE MECHANISM CAN SUPPORT AN ULTIMATE LOAD OF 150 LBS. ULTIMATE APPLIED 10.85" FROM THE INBOARD FACE OF THE SIDEPLATES AND CENTERED ON THE (A) DIMENSION. SEE STRESS REPORT R22165.
- B) CONVERT ULTIMATE LOAD TO AN ALLOWABLE TABLE TOP WEIGHT WITH THE FOLLOWING FORMULA. (WEIGHT OF ITEMS + WEIGHT OF TABLE TOP) X ULTIMATE LOAD FACTOR MUST BE LESS THAN OR EQUAL TO 150 LBS.

A = TABLE DASH NUMBER
TABLE LEAF WIDTH = A - .5

INSPECTION CLASS C	DRAWN: MWI	DATE: 9/6/2005	 Georgetown, Texas	
UNLESS OTHERWISE SPECIFIED	FINISH: N/A	MATERIAL: N/A		
1) ALL SURFACES PER EPS-121-01-D 2) REMOVE ALL BURRS & SHARP EDGES .010-.015 3) DIMENSIONS ARE IN INCHES 4) DO NOT SCALE DRAWING 5) TOLERANCES: DECIMAL ANGULAR .XX ± .04 ± 1° .XXX ± .010 6) ALL MACHINED SURFACES 63√			The data, concepts or designs contained herein are the exclusive property of Entlite, Inc. or contain the proprietary rights of others and shall not be used, disclosed, copied, duplicated or reproduced without the written consent of Entlite, Inc.	
SIZE A	DWG NO. N54475	REV. D	SHEET 1 OF 2	

6 5 4 3 2 1

D

D

C

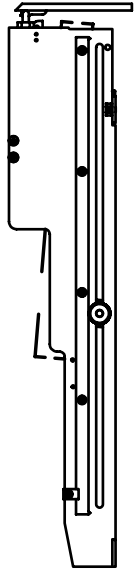
C

B

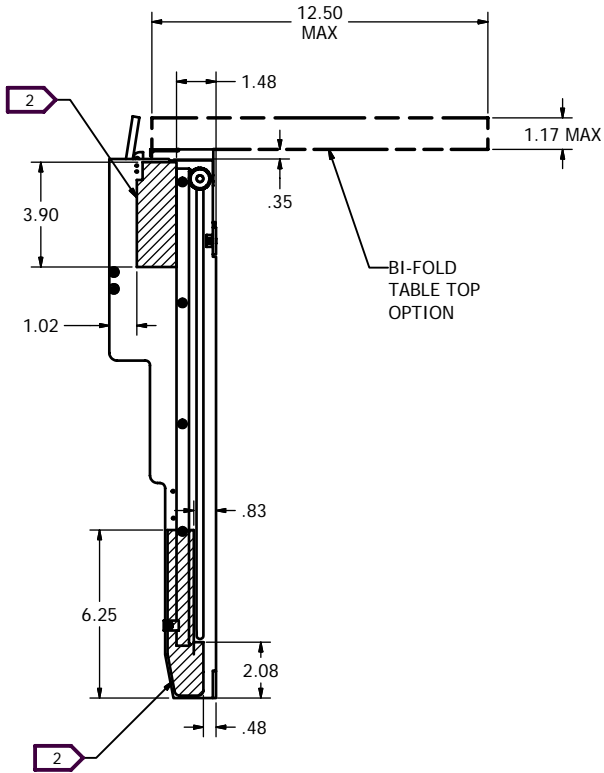
B

A

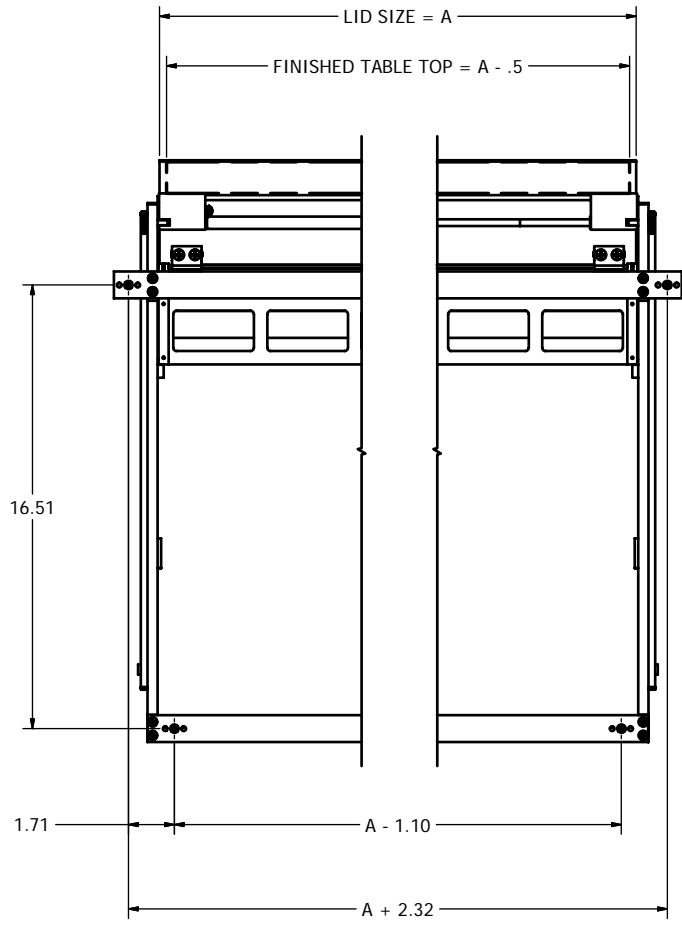
A



**54475-XXS
STOWED**



**54475-XXS
DEPLOYED**



**A = TABLE DASH NUMBER
FINISHED TABLE TOP WIDTH = A - .5**

6 5 4 3 2 1