

NOTES:

1) TABLE TOP INFORMATION

- A) THE COMPLIANCE OF THE INSTALLATION OF THE TABLE TOP TO FEDERAL AVIATION REGULATIONS IS THE RESPONSIBILITY OF THE INSTALLER.
- B) THE SIZE AND LOCATION OF THE TABLE TOP MOUNTING HOLES ARE AS INDICATED.

2) AIRCRAFT ATTACHMENT INFORMATION

- A) STRUCTURAL SUBSTANTIATION OF THE AIRCRAFT STRUCTURE IS THE RESPONSIBILITY OF THE INSTALLER.
- B) FASTENERS MUST NOT INTERFERE WITH THE OPERATION OF THE MECHANISM. COMPLIANCE TO APPLICABLE FEDERAL AVIATION REGULATIONS REGARDING AISLE CLEARANCE REQUIREMENTS IS THE RESPONSIBILITY OF THE INSTALLER.

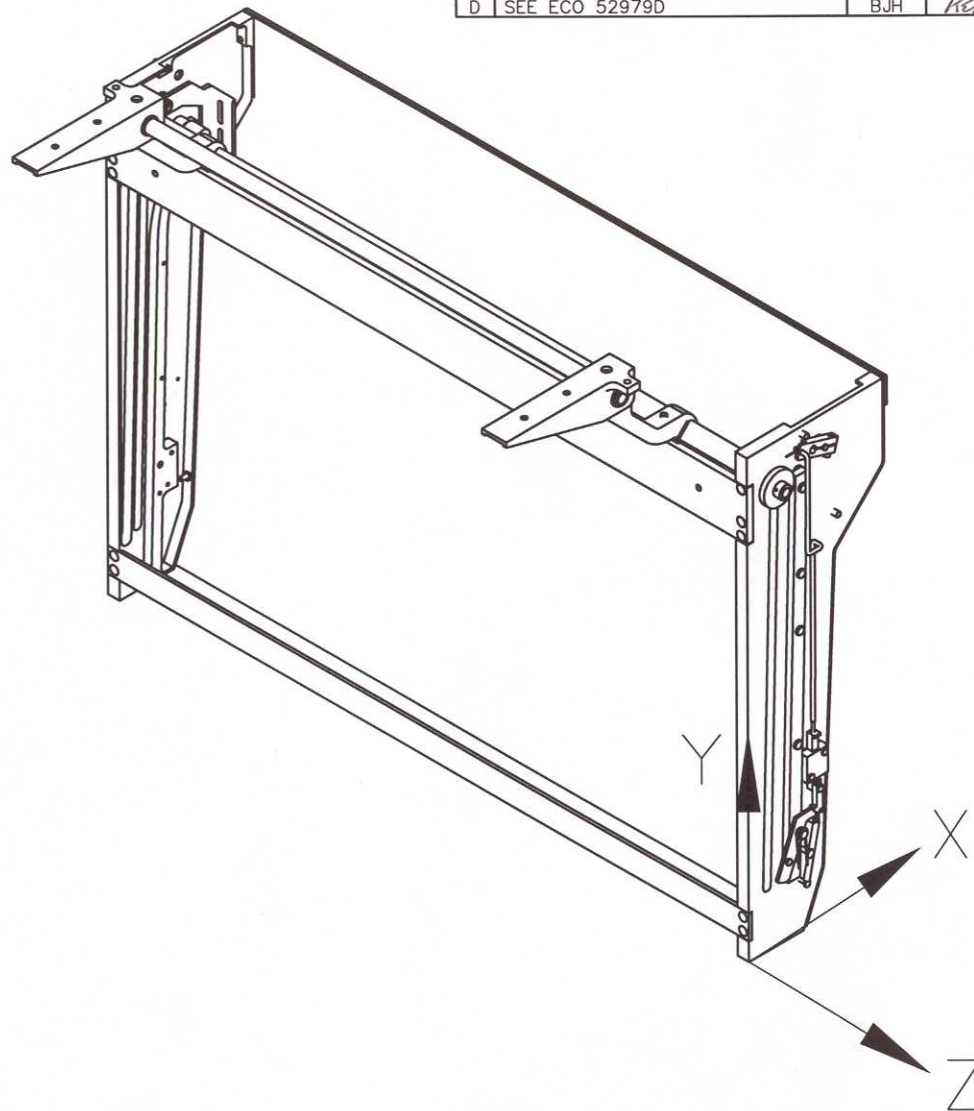
3) MECHANICAL INFORMATION

- A) WEIGHT OF MECHANISM: 13.13 LBS FOR 25" TABLE, ±.157 LBS PER INCH THE CENTER OF GRAVITY WHEN DEPLOYED IS X= 1.62, Y= 13.03 WHEN STOWED IS X=1.74, Y= 7.50 WITH Z BEING THE GEOMETRIC CENTER OF THE TABLE.
- B) THE MECHANISM CAN SUPPORT 236 LBS ULTIMATE APPLIED 13 INCHES FROM THE INBOARD EDGE OF THE MECHANISM. SEE STRESS REPORT "R22250".
- C) CONVERT ULTIMATE LOAD TO AN ALLOWABLE TABLE TOP WEIGHT AND ITEMS WITH THE FOLLOWING FORMULA:
 $(\text{WEIGHT OF ITEMS} + \text{WEIGHT OF TABLE TOP}) \times \text{ULTIMATE LOAD FACTOR} \leq 236$
 SEE OPERATION MANUAL "M22500" FOR ADDITIONAL INFORMATION ON MECHANISM OPERATION AND MAINTENANCE.

4) SCREW ADJUSTMENTS

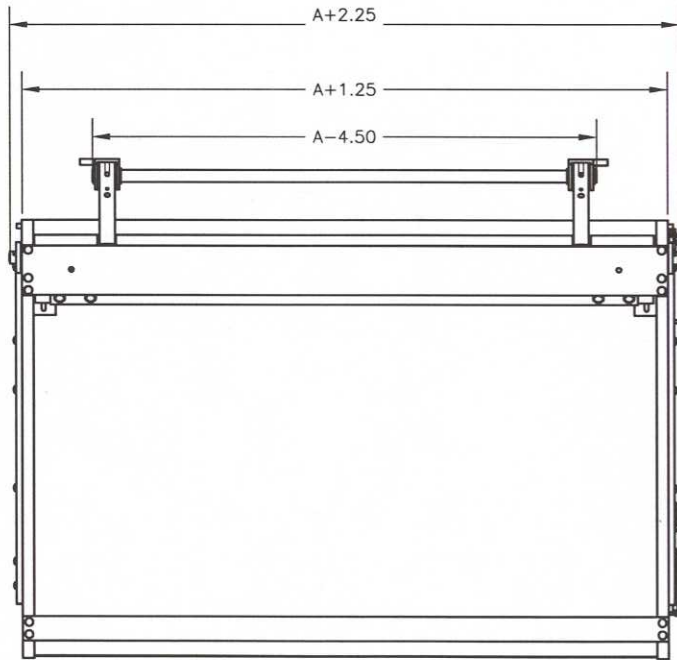
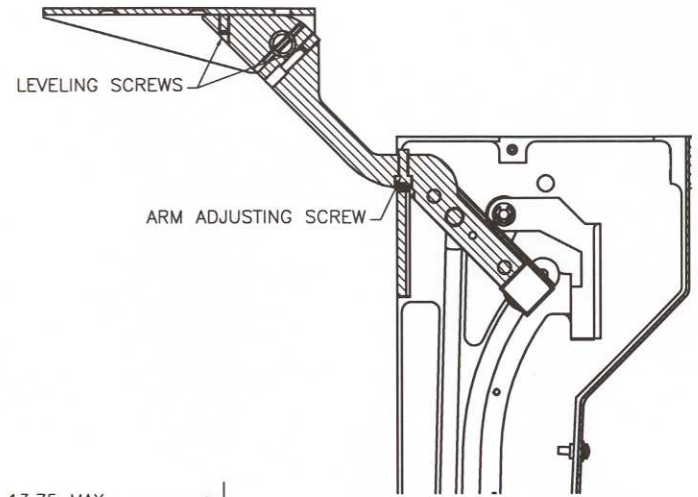
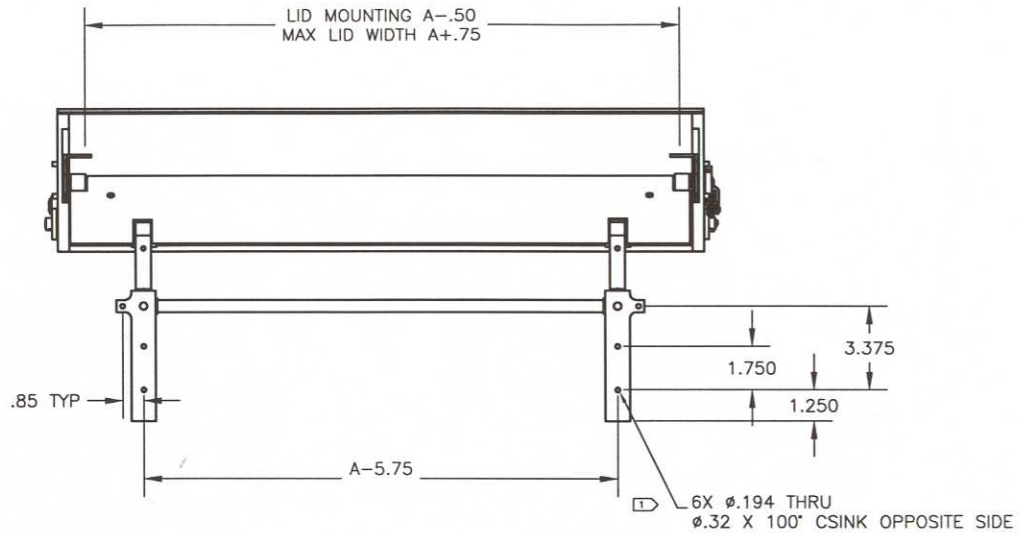
(SEE SHEET 2) THE ARM ADJUSTING SCREWS HAVE BEEN SET TO MINIMIZE TABLE TOP DEFLECTION. IF, AFTER INSTALLATION, A GAP APPEARS BETWEEN THE ARM ADJUSTING SCREWS AND THE STRAP WHEN DEPLOYED, THEY MUST BE READJUSTED (SEE MAINTENANCE MANUAL M22500) DO NOT USE THE ARM ADJUSTING SCREWS TO LEVEL THE TABLE TOP. LEVELING OF THE TABLE TOP MUST BE DONE USING THE LEVELING SET SCREWS.

REVISIONS				
LTR	DESCRIPTION	REV BY	APPROVED	DATE
A	INITIAL RELEASE	BJH	KET	6/19/02
B	SEE ECO N55100B	BJH	KET	8/7/02
C	SEE ECO N52979C	BJH	KET	9/4/02
D	SEE ECO 52979D	BJH	KET	9/6/02



A = DASH NUMBER (WIDTH OF TABLE)

<p style="font-size: 2em; color: blue;">Released</p> <p>INSPECTION CLASS</p>	DRAWN BJH 5/20/02	<p style="text-align: right; font-size: 0.8em;">Austin, Texas</p>		
	FINISH: N/A	TITLE INSTALLATION, 55100 SIDE WALL TABLE		
UNLESS OTHERWISE SPECIFIED TOLERANCES: DECIMAL .XX ± .01 .XXX ± .005 ANGULAR ± 1° DIMENSIONS ARE IN INCHES ALL MACHINED SURFACES $\sqrt{\text{V}}$ DO NOT SCALE DRAWING REMOVE ALL BURRS & SHARP EDGES .010-.015	MATERIAL: N/A			SIZE A
The data, concepts or designs contained herein are the exclusive property of Enflite, Inc. or contain the proprietary rights of others and shall not be used, disclosed, copied, duplicated or reproduced without the written consent of Enflite, Inc.		SCALE NONE	CAD FILE 55100-XX-D-D	SHEET 1 OF 2



A = DASH NUMBER (WIDTH OF TABLE)

SIZE	DWG NO.	REV.
A	N55100	D
SCALE	CAD FILE	SHEET
NONE	55100-XX-D-D	2 OF 2