

2



1

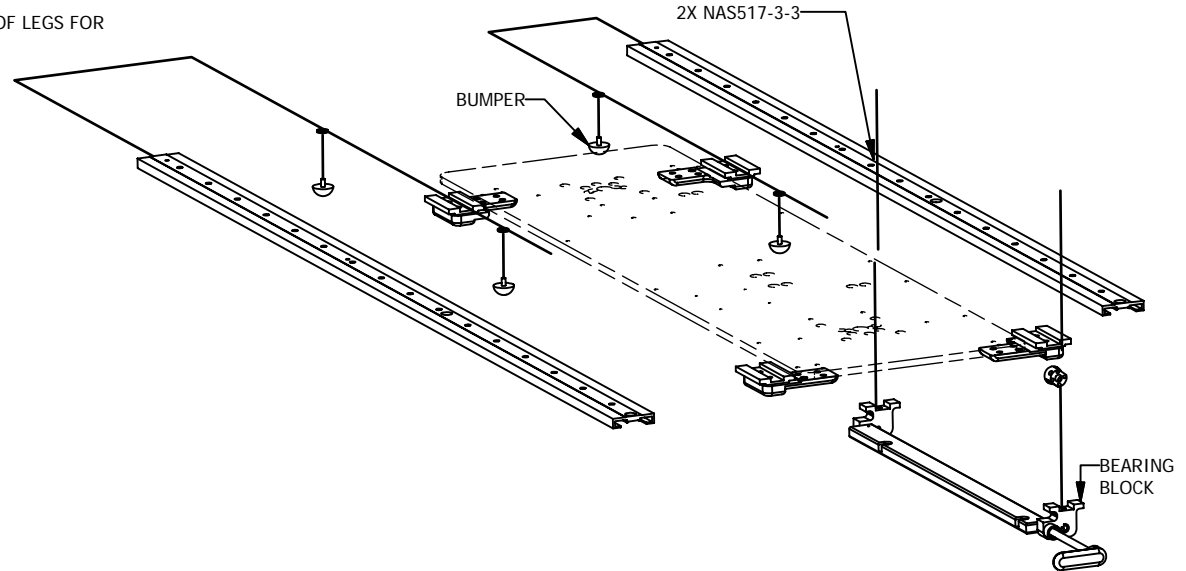
NOTES:

1. ATTACHMENT OF TABLETOP TO MODEL 70040 SLIDE TOP ASSEMBLY.
  - A. THE TABLE TOP MUST BE FASTENED TO THE SLIDE TOP ASSEMBLY WITH A MINIMUM OF FOUR (4) NAS603 SCREWS PER SIDE.
  - B. COMPLIANCE OF THE TABLETOP TO FEDERAL AVIATION REGULATIONS IS THE RESPONSIBILITY OF THE INSTALLER.
  - C. MOUNTING HOLES FOR THE TABLETOP SHOULD BE MARKED WHILE THE RAILS ARE ASSEMBLED TO THE PEDESTAL TABLE. ONCE THE HOLES ARE MARKED, REMOVE THE RAILS FROM THE ASSEMBLY BY REMOVING THE 2X NAS517-3-3 FASTENERS AT THE BEARING BLOCK LOCATIONS, REMOVE THE RUBBER BUMPERS, THEN SLIDE THE RAILS OFF THE GUIDES. ATTACH RAILS TO TABLETOP, THEN SLIDE BACK IN PLACE AND RETURN BUMPERS, BLOCKS AND HARDWARE TO ORIGINAL CONFIGURATION.
  - D. HANDLE IS ONLY DESIGNED TO ACTUATE THE LOCKING MECHANISM AND SHOULD NOT BE USED TO TRANSLATE THE TABLETOP.
  - E. TABLETOP WILL SIT 0.10 INCHES ABOVE THE TOP PLATE.

2. MAXIMUM TABLETOP WEIGHT IS 50 LBS. CAUTION! PEDESTAL TABLE MAY HAVE LOWER TABLETOP WEIGHT REQUIREMENTS. REFER TO THE PEDESTAL TABLE INSTALLATION DRAWING FOR WEIGHT LIMITS. CG OF TABLETOP MUST BE WITHIN 3.0 INCHES FROM THE CENTER OF LEGS FOR TAXI, TAKEOFF AND LANDING.


3. LOAD FACTORS:
- 9.0 FORWARD
  - 1.5 REAR
  - 3.0 SIDE
  - 6.5 UP
  - 10.0 DOWN

REVISIONS				
REV	DESCRIPTION	REV BY	APPROVED	DATE
A	INITIAL RELEASE	KPE	KPW	02/10/04
B	SEE ECO N70040B	KPE	VHT	04/14/05
C	SEE ECO N70040C	WHC	DO NOT USE	



A

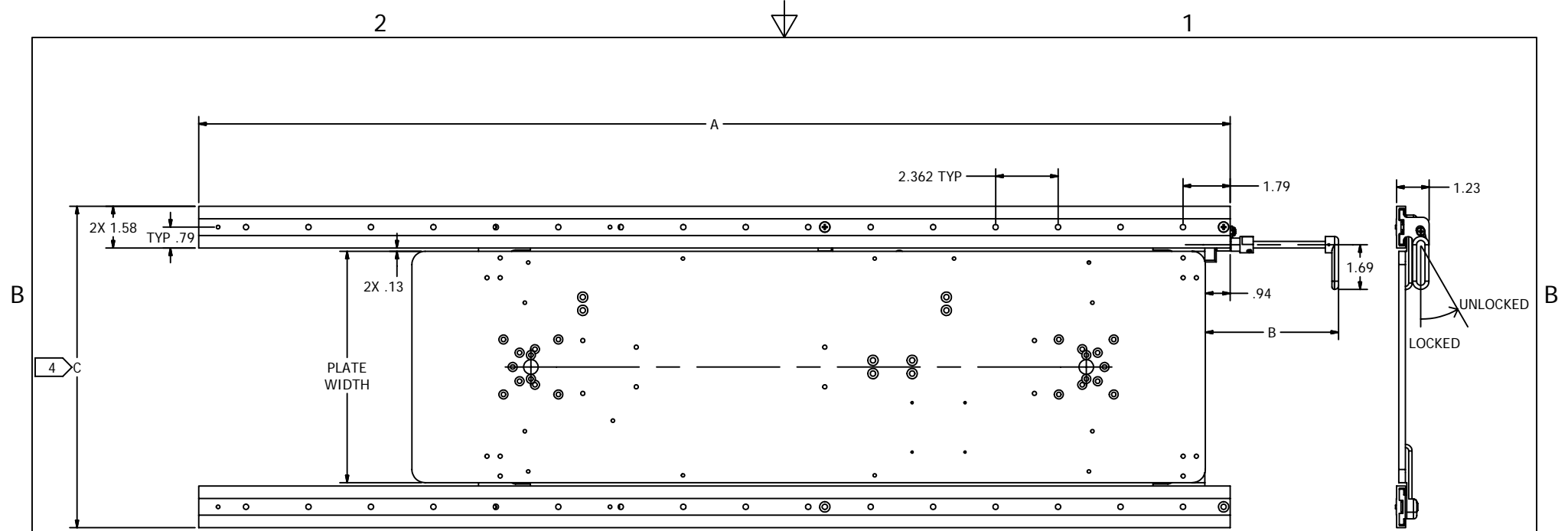
A

INSPECTION CLASS C		DRAWN: KPE	DATE: 11/26/2003	 Georgetown, Texas	
UNLESS OTHERWISE SPECIFIED		FINISH: NONE			
1) ALL SURFACES PER EPS-121-01-D 2) REMOVE ALL BURRS & SHARP EDGES .010-.015 3) DIMENSIONS ARE IN INCHES 4) DO NOT SCALE DRAWING 5) TOLERANCES: DECIMAL                      ANGULAR .XX ± .10                      ± 1° .XXX ± .050 6) ALL MACHINED SURFACES 63/		MATERIAL: NONE		TITLE: SLIDE TOP	
The data, concepts or designs contained herein are the exclusive property of Entlite, Inc. or contain the proprietary rights of others and shall not be used, disclosed, copied, duplicated or reproduced without the written consent of Entlite, Inc.		SIZE: A	DWG NO: N70040	REV: C	SHEET: 1 OF 2

2



1



STOWED POSITION SHOWN

NOTE:  
 4 TO DETERMINE DIMENSION C REFER TO  
 TOP PLATE DRAWING FOR PLATE WIDTH.

DEPLOY DIRECTION →

SEE SLIDE TOP TABLE  
 FOR STROKE

SLIDE TOP TABLE			
ASSY #	A	B	STROKE
70040-01	39.00	5.04	9.00
70040-02	36.95	3.54	12.00
70040-03	39.00	5.04	11.23
70040-04	36.95	5.04	12.00
70040-05	36.95	5.04	12.00