

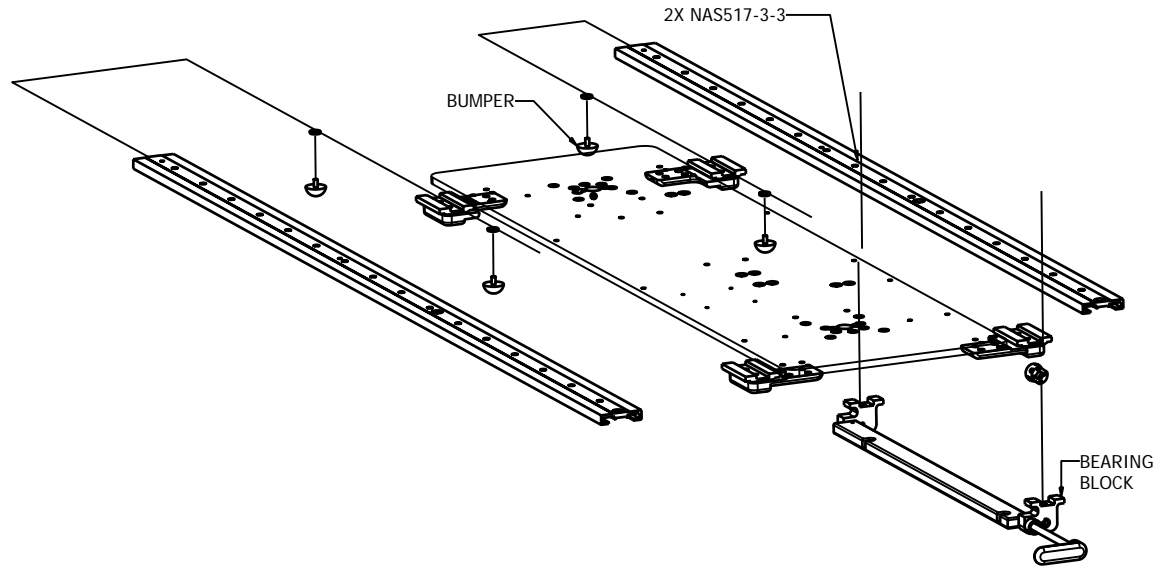
NOTES:


1. ATTACHMENT OF TABLETOP TO MODEL 70040 SLIDE TOP ASSEMBLY.
  - A. THE TABLE TOP MUST BE FASTENED TO THE SLIDE TOP ASSEMBLY WITH A MINIMUM OF FOUR (4) NAS603 SCREWS PER SIDE.
  - B. COMPLIANCE OF THE TABLETOP TO FEDERAL AVIATION REGULATIONS IS THE RESPONSIBILITY OF THE INSTALLER.
  - C. MOUNTING HOLES FOR THE TABLETOP SHOULD BE MARKED WHILE THE RAILS ARE ASSEMBLED TO THE PEDESTAL TABLE. ONCE THE HOLES ARE MARKED, REMOVE THE RAILS FROM THE ASSEMBLY BY REMOVING THE 2X NAS517-3-3 FASTENERS AT THE BEARING BLOCK LOCATIONS, REMOVE THE RUBBER BUMPERS, THEN SLIDE THE RAILS OFF THE GUIDES. ATTACH RAILS TO TABLETOP, THEN SLIDE BACK IN PLACE AND RETURN BUMPERS, BLOCKS AND HARDWARE TO ORIGINAL CONFIGURATION.
  - D. HANDLE IS ONLY DESIGNED TO ACTUATE THE LOCKING MECHANISM AND SHOULD NOT BE USED TO TRANSLATE THE TABLETOP.
  - E. TABLETOP WILL SIT 0.10 INCHES ABOVE THE TOP PLATE.

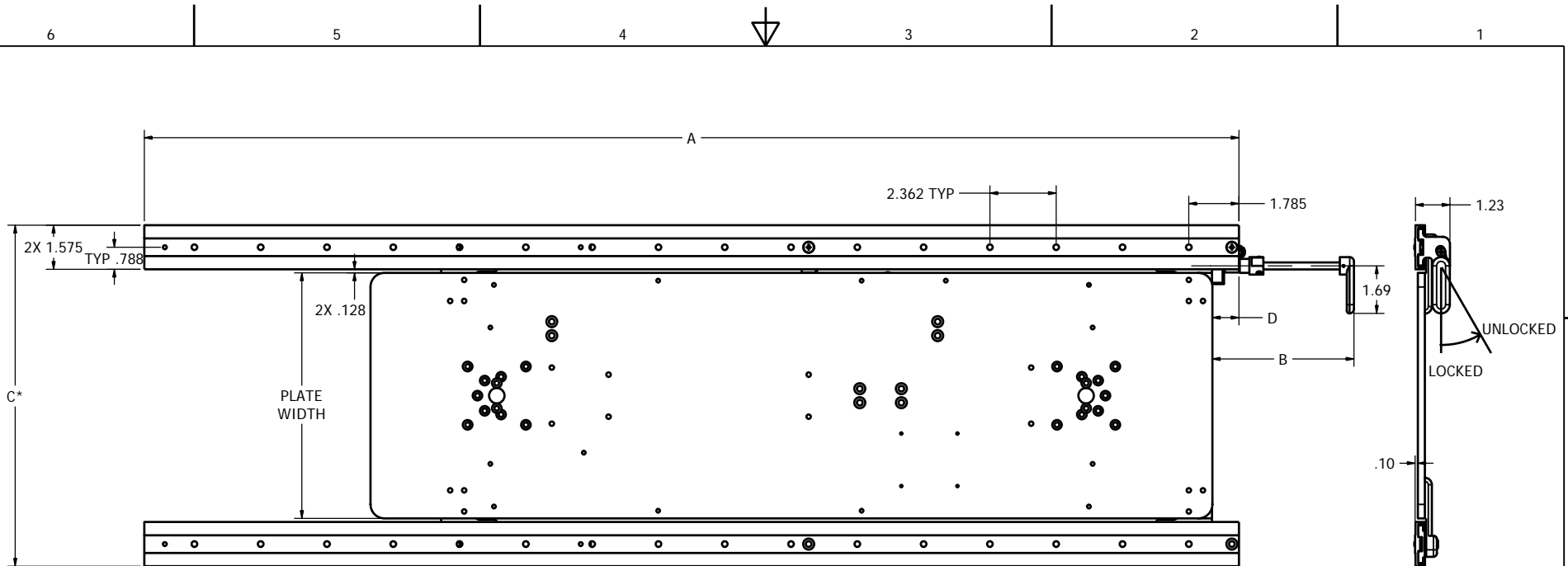
2. MAXIMUM TABLETOP WEIGHT IS 50 LBS. CAUTION! PEDESTAL TABLE MAY HAVE LOWER TABLETOP WEIGHT REQUIREMENTS. REFER TO THE PEDESTAL TABLE INSTALLATION DRAWING FOR WEIGHT LIMITS. CG OF TABLETOP MUST BE WITHIN 3.0 INCHES FROM THE CENTER OF LEGS FOR TAXI, TAKEOFF AND LANDING.

3. LOAD FACTORS:

- 9.0 FORWARD
- 1.5 REAR
- 3.0 SIDE
- 6.5 UP
- 10.0 DOWN



INSPECTION CLASS C		DRAWN: KPE	DATE: 11/26/2003	 Georgetown, Texas
UNLESS OTHERWISE SPECIFIED		FINISH: NA		
1) ALL SURFACES PER EPS-121-01-D 2) REMOVE ALL BURRS & SHARP EDGES .010-.015 3) DIMENSIONS ARE IN INCHES 4) DO NOT SCALE DRAWING 5) TOLERANCES: DECIMAL                      ANGULAR XX ± .04                      ± 1° XXX ± .010		MATERIAL: NA		TITLE
6) ALL MACHINED SURFACES 63/√		The data, concepts or designs contained herein are the exclusive property of Enflite, Inc. or contain the proprietary rights of others and shall not be used, disclosed, copied, duplicated or reproduced without the written consent of Enflite, Inc.		SLIDE TOP
SIZE A	DWG NO. N70040	REV. E	SHEET 1 OF 2	



**STOWED POSITION SHOWN**

DEPLOY DIRECTION →  
(SEE PART NO. TABLE FOR STROKE  
AND VARIABLE DIMENSIONS)

PART NO. TABLE					
PART NO.	DIM. A	DIM. B**	DIM. C	DIM. D**	STROKE
70040-01	39.00	5.00	*	1.00	9.00
70040-02	36.95	3.50	*	1.00	12.00
70040-03	39.00	5.00	*	1.00	11.23
70040-04	36.95	5.00	*	1.00	12.00
70040-05	36.95	5.00	*	1.00	12.00
70040-06	39.00	2.50	*	1.00	11.23
70040-07	39.00	2.50	*	1.00	9.23
70040-08	39.00	9.50	*	6.50	8.00
70040-09	39.00	2.50	*	1.00	9.00

\*TO DETERMINE DIMENSION C REFER TO TOP PLATE DRAWING OR CUSTOMER SPEC SHEET FOR PLATE WIDTH.  
\*\* DIMENSION VALUES FOR B AND D ARE WITH SLIDE TOP STOWED, FOR DEPLOYED VALUES ADD STROKE.