

NOTES:

1 REFER TO THE TOP LEVEL "ERP" BILL OF MATERIALS FOR ACTUAL HEIGHT AND WIDTH DEPENDENT PART NUMBERS THAT ARE REQUIRED. SUPPLY A COPY OF THE "ERP" BILL OF MATERIALS AND THE DRAWINGS OF THE REQUIRED PARTS NEEDED WITH THIS DOCUMENT. USE THE DRAWINGS TO DEFINE ACTUAL TABLE DIMENSIONS FOR INSTALLATION.

2 ATTACHMENT OF P/N 70241-XX PEDESTAL ASSEMBLY TO THE TABLE TOP.

A. THE WEIGHT OF THE TABLE TOP MUST NOT EXCEED 60 LBS.
 B. THE CENTER OF GRAVITY OF THE TABLE TOP MUST BE WITHIN 5 INCHES OF THE CENTERLINE OF THE PEDESTAL.

C. THE TABLE TOP MUST BE FASTENED TO THE PEDESTAL WITH A MINIMUM OF FOUR AN3 BOLTS (OR EQUIV.) IN THE HATCHED AREA SHOWN IN THE TOP VIEW. ADDITIONAL SCREWS OUTSIDE THE HATCHED AREA MAY IMPROVE RIGIDITY.

D. THE COMPLIANCE OF THE TABLE TOP TO FEDERAL AVIATION REGULATIONS IS THE RESPONSIBILITY OF THE INSTALLER.

3 ATTACHMENT OF P/N 70241-XX PEDESTAL ASSEMBLY TO THE AIRCRAFT STRUCTURE.

A. THE PEDESTAL TABLE TOP ASSEMBLY MUST BE FASTENED TO THE AIRCRAFT STRUCTURE WITH A MINIMUM OF FOUR AN3 BOLTS OR MS24694 SCREWS (OR EQUIV.) IN THE HATCHED AREA SHOWN IN SECTION A-A. ADDITIONAL SCREWS OUTSIDE THE HATCHED AREA MAY IMPROVE RIGIDITY.

B. THE ABILITY OF THE AIRCRAFT STRUCTURE TO RESIST THE LOADS OF THE PEDESTAL TABLE TOP ASSEMBLY UNDER THE DESIGN LOAD FACTORS (SEE NOTE 4) IS THE RESPONSIBILITY OF THE INSTALLER
 C. COMPLIANCE TO APPLICABLE FEDERAL AVIATION REGULATIONS REGARDING AISLE CLEARANCE REQUIREMENTS IS THE RESPONSIBILITY OF THE INSTALLER.

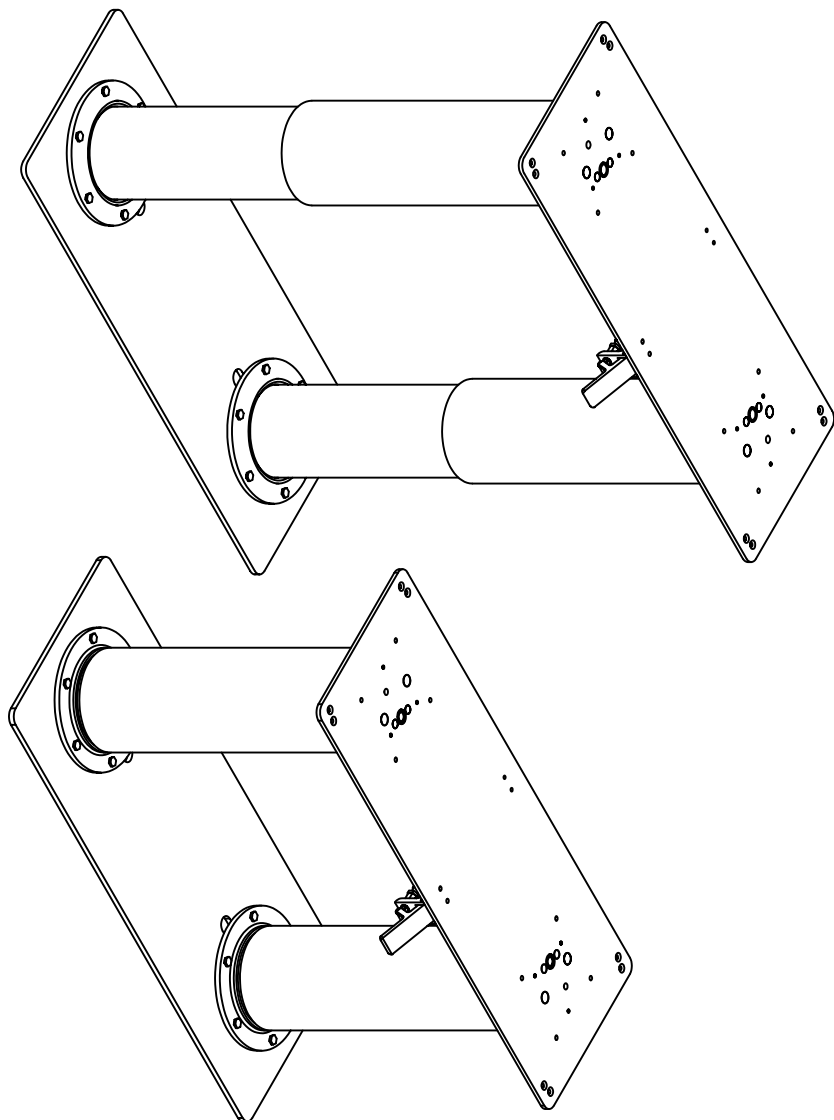
4. DESIGN LOAD FACTORS.

A. THE FOLLOWING LOAD FACTORS WERE USED IN CONSIDERING THE STRUCTURAL INTEGRITY OF THE PEDESTAL:

- FORWARD 9.00 G
- AFT: 1.50 G
- LATERAL: 3.00 G
- UP: 6.50 G
- DOWN: 9.60 G

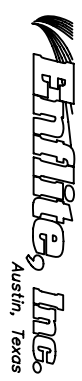
THESE LOAD FACTORS MEET OF EXCEED THE REQUIREMENTS OF FAR PART 25.561 AND BOEING GALLEY DESIGN LOADS.

B. FOR TABLE TOPS WEIGHING OVER 35 LBS, TABLE MUST BE IN THE STOWED POSITION FOR TAKE-OFF AND LANDING, AND MUST BE PLACARDED AS SUCH.

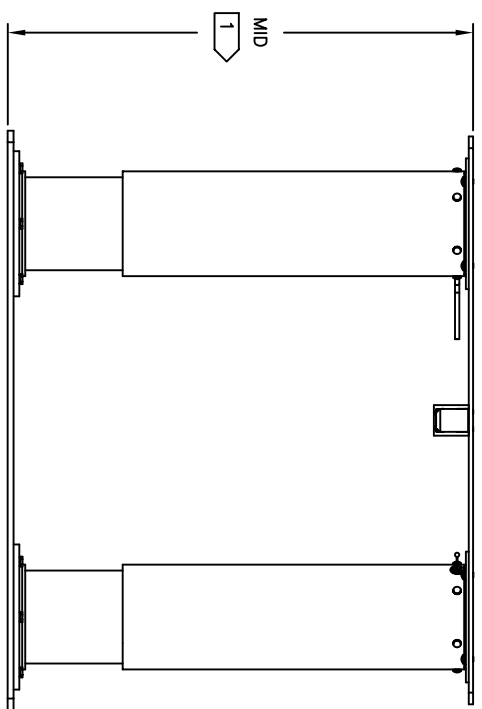
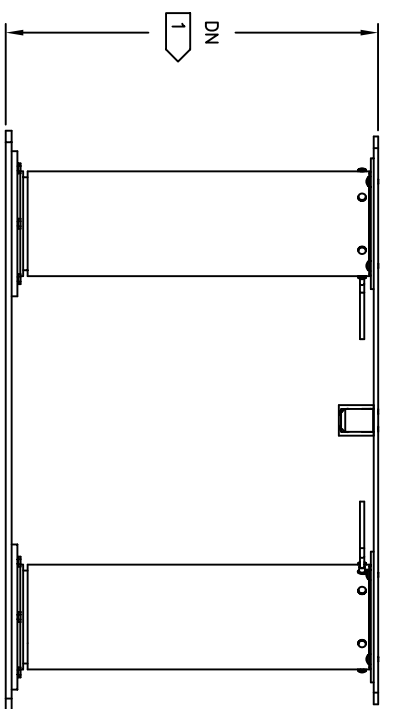
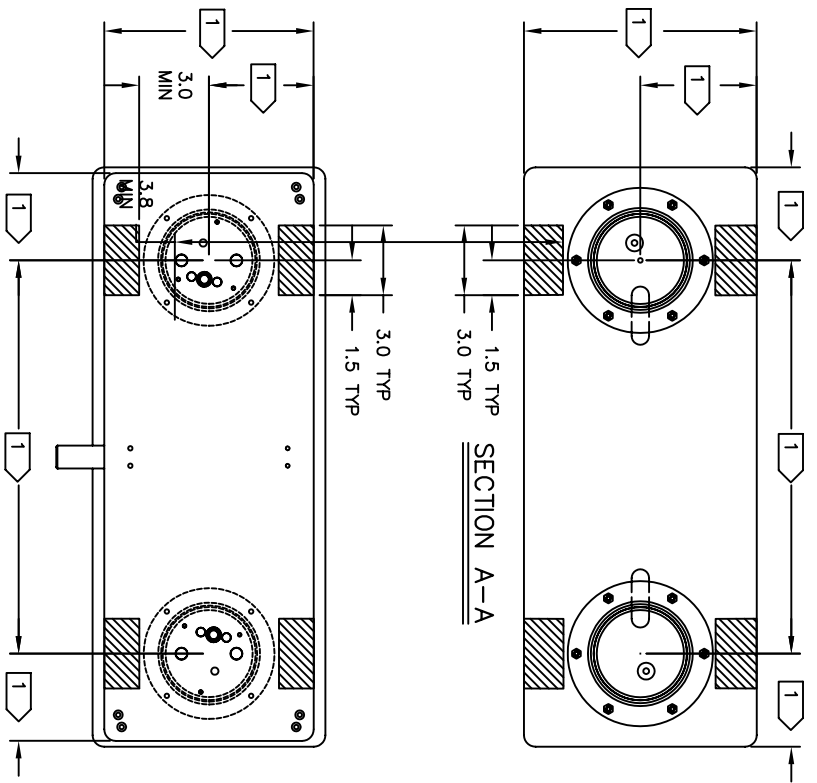
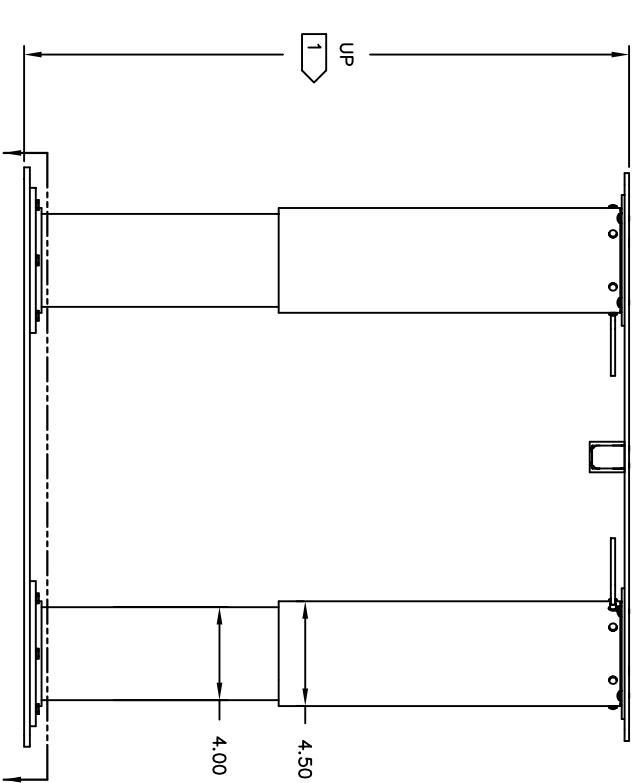


REVISIONS		REV BY	APPROVED	DATE
LTR	DESCRIPTION			
A	INITIAL RELEASE	JKC	KET	10/09/02
B	SEE ECO N70241B	JKC	KPW	01/13/04
C	SEE ECO N70241C	VRM	JWS	04/03/08

DRAWN K. CREAMER		TITLE INSTALLATION, 4" HI-LO PEDESTAL, 70241,	
FINISH: N/A		MATERIAL: N/A	
INSPECTION CLASS A		UNLESS OTHERWISE SPECIFIED TOLERANCES: ANGULAR ± 1°	
DECIMAL .XX ± .01 .XXX ± .005		DIMENSIONS ARE IN INCHES ALL MACHINED SURFACES DO NOT SCALE DRAWING REMOVE ALL BURRS & SHARP EDGES .010--.015	
SCALE NONE		SIZE A	DWG NO. N70241
CADD FILE 70241-XX-C-C		REV. C	SHEET 1 OF 2



The data, concepts or designs contained herein are the exclusive property of Enville, Inc. and shall not be copied, duplicated or reproduced without the written consent of Enville, Inc.



SIZE	DWG NO.	REV.
A	N70241	C
SCALE NONE	CAD FILE 70241-XX-C-C	SHEET 2 OF 2