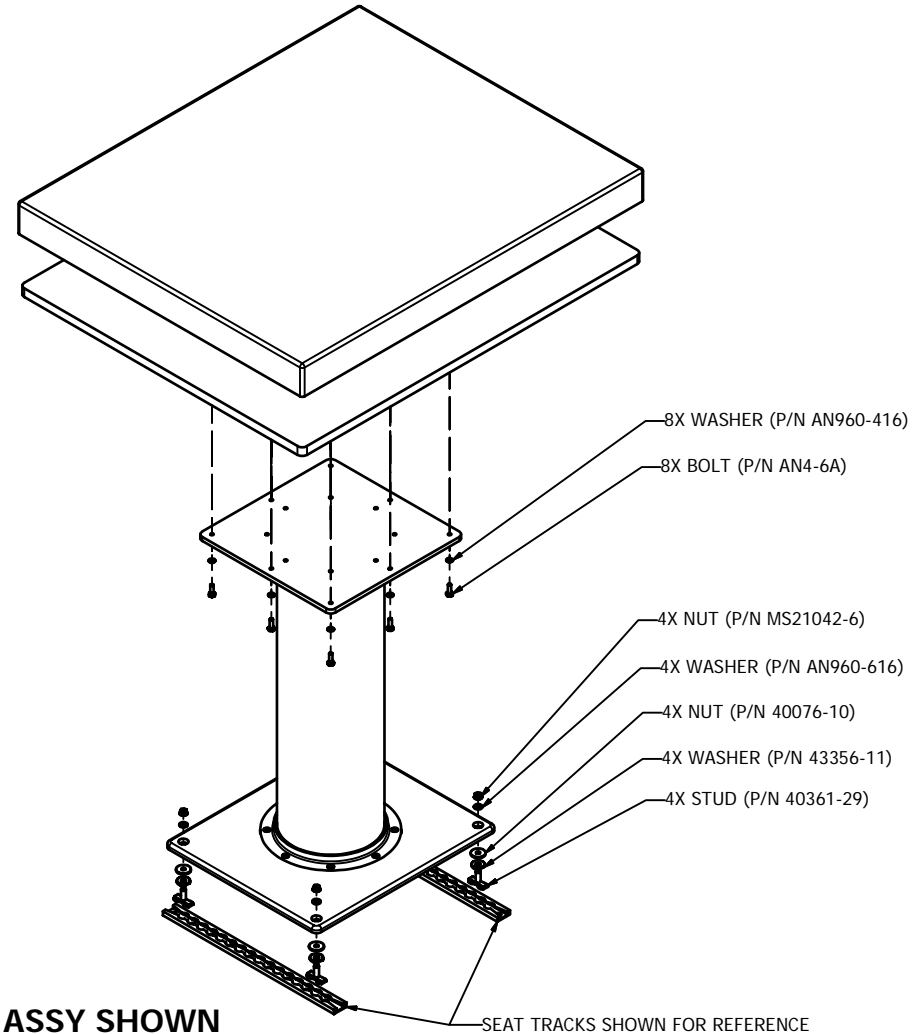



NOTES:

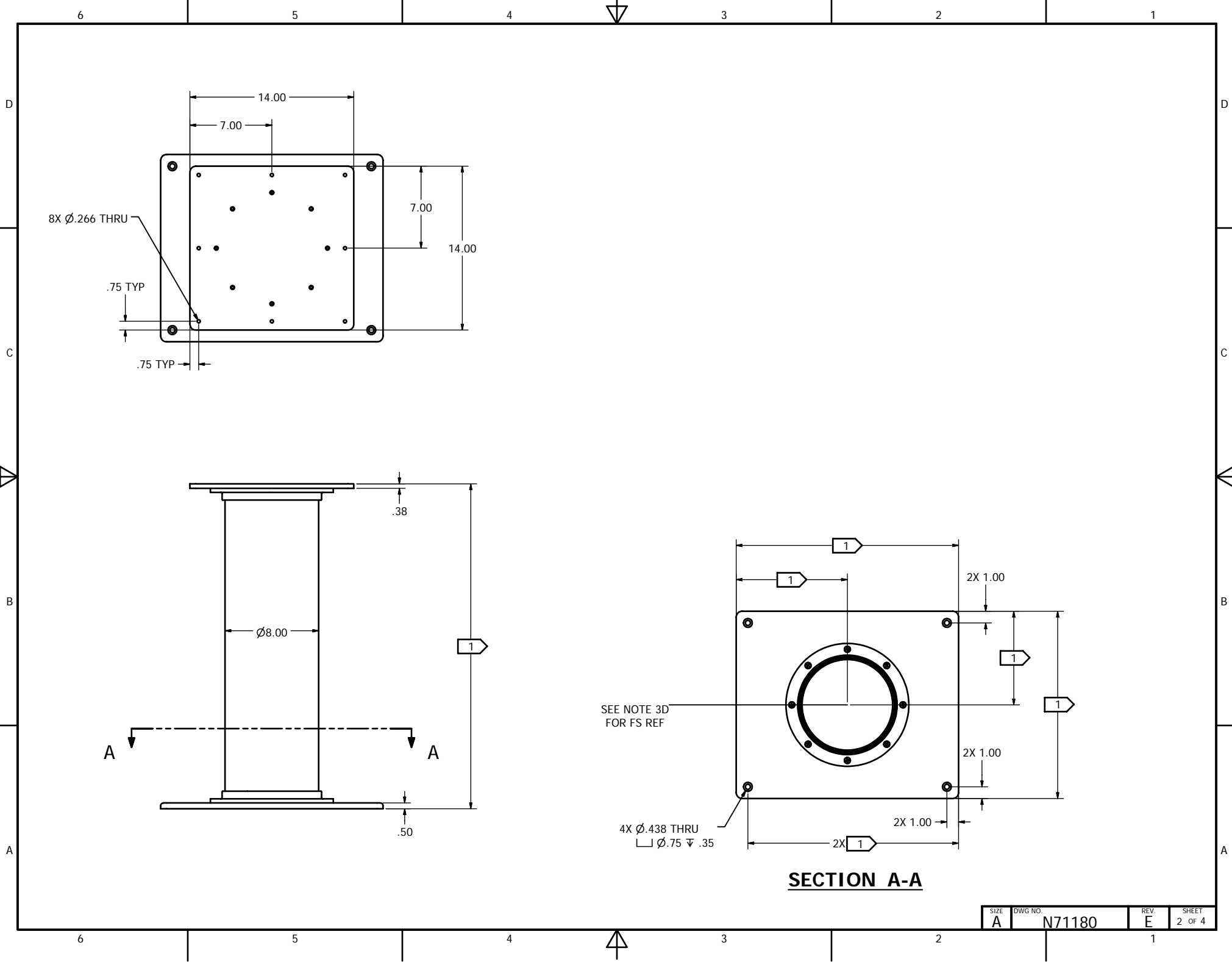
- 1 REFER TO THE TOP LEVEL "ERP" BILL OF MATERIALS FOR ACTUAL TOP PLATE, BOTTOM PLATE, AND THE TABLE LEG PART NUMBERS. SUPPLY A COPY OF THE "ERP" BILL OF MATERIALS AND DRAWINGS OF REQUIRED TOP PLATE, BOTTOM PLATE, AND TABLE LEG WITH THIS DOCUMENT. USE THE DRAWINGS, AND CUSTOMER SPEC SHEET, TO DEFINE ACTUAL TABLE DIMENSIONS FOR INSTALLATION.
2. ATTACHMENT OF TABLE TOP TO THE PEDESTAL.
 - A. THE WEIGHT OF THE TABLE TOP MUST NOT EXCEED 86 LBS. INCLUDING CRASH PAD.
 - B. THE TABLE TOP SHALL BE FASTENED TO THE PEDESTAL WITH ALL HARDWARE INDICATED AND IN THE MANNER SHOWN IN THIS DRAWING.
3. ATTACHMENT OF THE PEDESTAL ASSEMBLY TO AIRCRAFT STRUCTURE.
 - A. THE PEDESTAL TABLE ASSEMBLY SHALL BE FASTENED TO THE AIRCRAFT STRUCTURE WITH ALL HARDWARE INDICATED AND IN THE MANNER SHOWN IN THIS DRAWING.
 - B. THE ABILITY OF THE AIRCRAFT STRUCTURE TO RESIST THE LOADS OF THE PEDESTAL TABLE ASSEMBLY UNDER THE DESIGN LOAD FACTORS (SEE NOTE 4) IS THE RESPONSIBILITY OF THE INSTALLER.
 - C. COMPLIANCE TO APPLICABLE FEDERAL AVIATION REGULATIONS REGARDING AISLE CLEARANCE REQUIREMENTS IS THE RESPONSIBILITY OF THE INSTALLER.
 - D. 71180-01/-03 ASSYS (CNTR AISLE LOC) REF FS 494.0, 71180-02 ASSY (R/H AISLE LOC) REF FS 554.5.
4. DESIGN LOAD FACTORS.
 - A. THE FOLLOWING LOAD FACTORS WERE USED IN CONSIDERING THE STRUCTURAL INTEGRITY OF THE PEDESTAL:
 FORWARD: 9.00 G
 AFT: 9.00 G
 LATERAL: 9.00 G
 UP: 6.50 G
 DOWN: 9.60 G
 THESE LOAD FACTORS MEET OR EXCEED THE REQUIREMENTS OF FAR PART 25.561 AND BOEING ABUSE LOADS.
 - B. SEE STRESS REPORT R71180-1.
5. REQUIRED PLACARDS.
 - A. INSTALL PLACARD 71184-01 OR EQUIVALENT IN A CONSPICUOUS PLACE ON OR NEAR THE PEDESTAL TABLE.
 - B. INSTALL PLACARDS 71184-02 AND 71184-03, OR THEIR EQUIVALENTS, ON THE 27017-01 CRASH PAD.
6. ATTACHMENT OF CRASH PAD.
 - A. CRASH PAD MUST BE IN PLACE DURING TAXI, TAKE-OFF AND LANDING.
 - B. POSITION CRASH PAD ON TABLE TOP AND SECURE WITH HOOK AND LOOP FASTENERS.
7. TABLETOP TO BE FINISHED BY CUSTOMER WHO IS RESPONSIBLE FOR DEMONSTRATING COMPLIANCE WITH 14 CFR 25.853(a).
8. PROTECTIVE CAPS, (ANCR P/N 41067-10 - NOT SHOWN), MAY BE INSTALLED ON THE STUDS, (ANCR P/N 40361-29), AT THE INSTALLER'S DISCRETION.

REVISIONS				
REV	DESCRIPTION	REV BY	APPROVED	DATE
A	INITIAL RELEASE	EPW	KPE	12/15/2006
B	SEE ECO N71180B	EPW	KPE	01/09/2007
C	SEE ECO N71180C	EPW	KPE	03/13/2007
D	SEE ECO N71180D	EPW	KPE	03/28/2007
E	SEE ECO N71180E	EPW	DO NOT USE	



-01 ASSY SHOWN

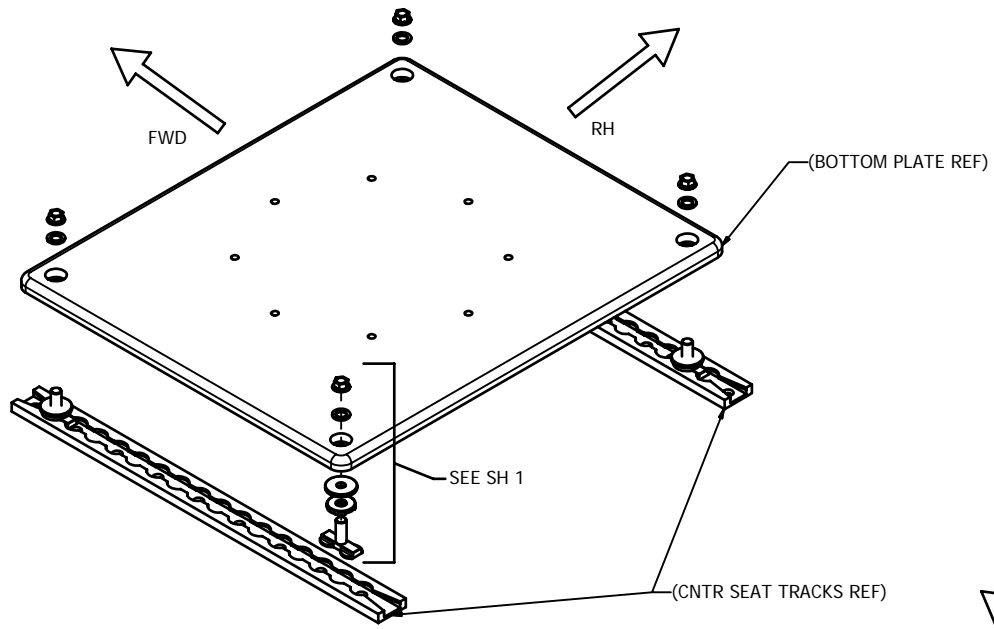
INSPECTION CLASS C	DRAWN: EPW	DATE: 11/8/2006	 Georgetown, Texas	
UNLESS OTHERWISE SPECIFIED	FINISH: N/A			
1) ALL SURFACES PER EPS-121-01-D	MATERIAL: N/A		TITLE INSTALLATION, 8" DIA SGL PEDESTAL TABLE	
2) REMOVE ALL BURRS & SHARP EDGES .010-.015	The data, concepts or designs contained herein are the exclusive property of Entilite, Inc. or contain the proprietary rights of others and shall not be used, disclosed, copied, duplicated or reproduced without the written consent of Entilite, Inc.			
3) DIMENSIONS ARE IN INCHES	DECIMAL	ANGULAR	SIZE	DWG NO.
4) DO NOT SCALE DRAWING	.XX ± .04	± 1°	A	N71180
5) TOLERANCES:	.XXX ± .010		REV.	SHEET
6) ALL MACHINED SURFACES	63		E	1 OF 4



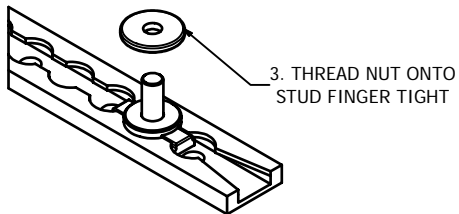
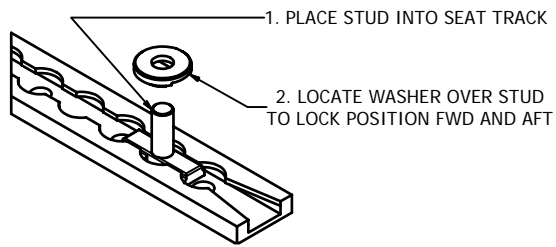
6 5 4 3 2 1

D

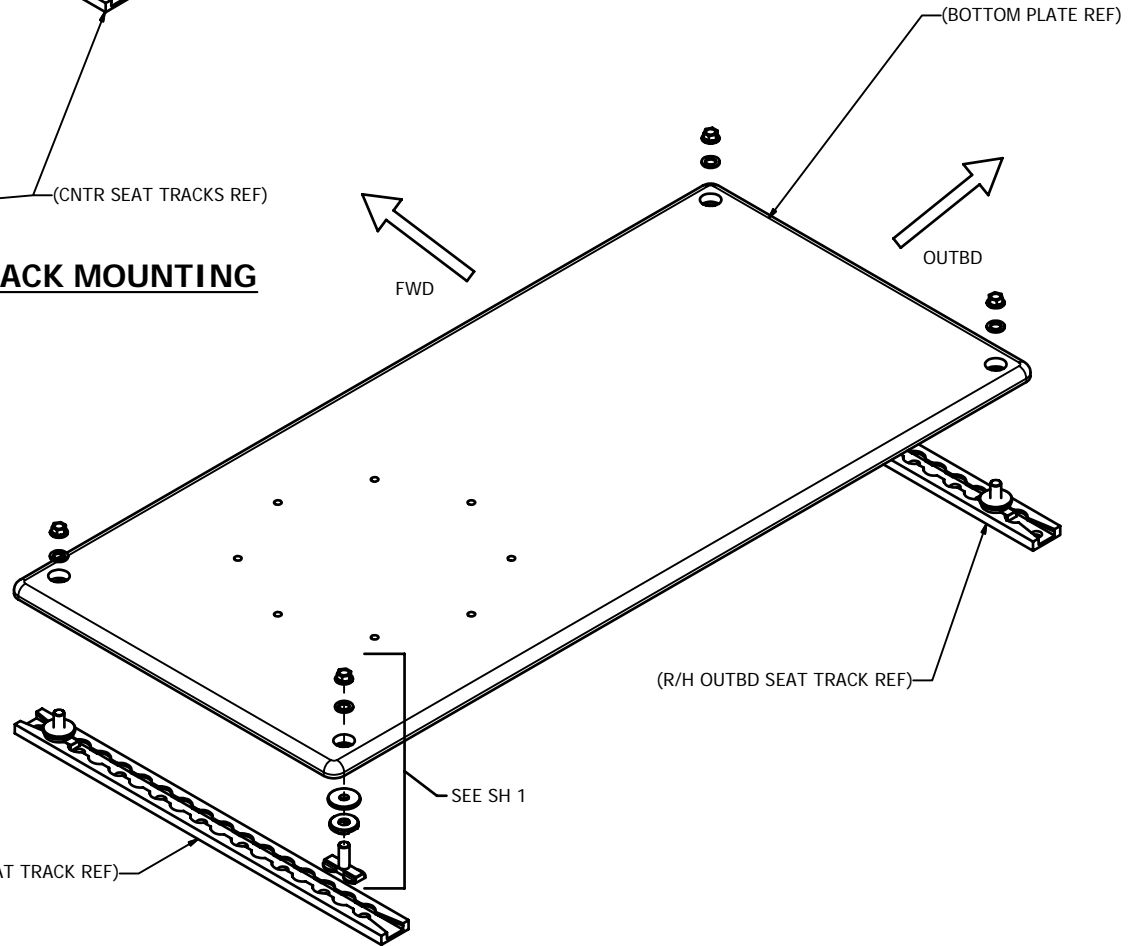
D



-01/-03 ASSY, BOTTOM PLATE TO SEAT TRACK MOUNTING
(CNTR AISLE LOC)



TRACK FITTING DETAIL
(TYP 4 PLACES)



-02 ASSY, BOTTOM PLATE TO SEAT TRACK MOUNTING
(OUTBD AISLE LOC)

B

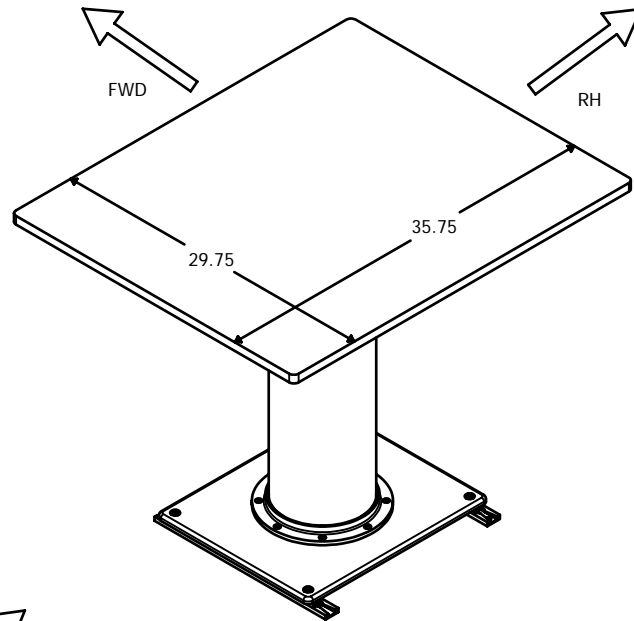
B

A

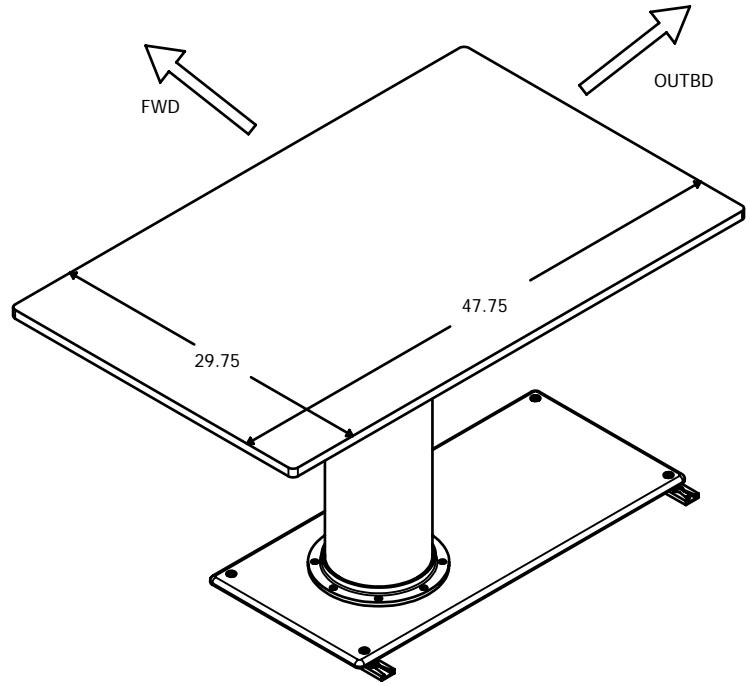
A

6 5 4 3 2 1

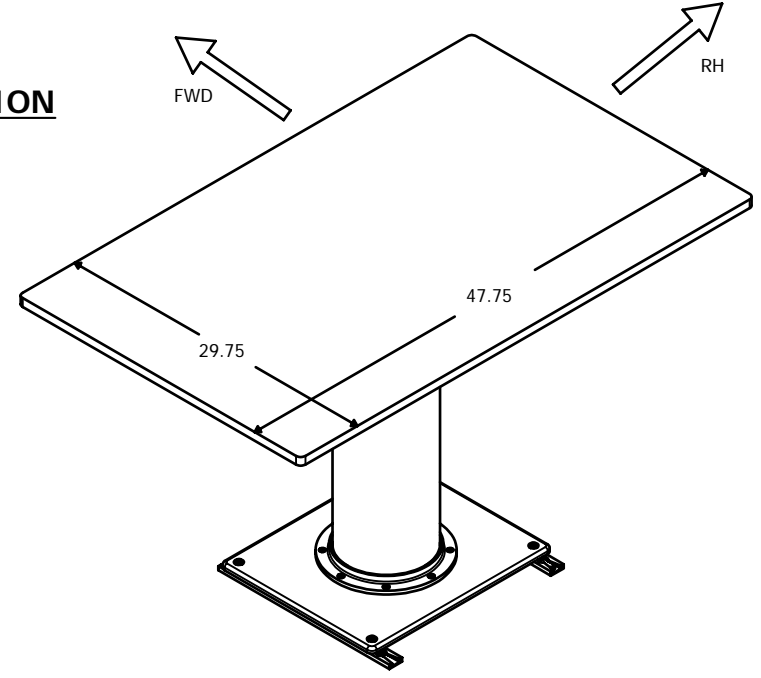
SIZE	DWG NO.	REV.	SHEET
A	N71180	E	3 OF 4



-01
TABLE TOP ORIENTATION



-02
TABLE TOP ORIENTATION



-03
TABLE TOP ORIENTATION

SIZE	DWG NO.	REV.	SHEET
A	N71180	E	4 OF 4