

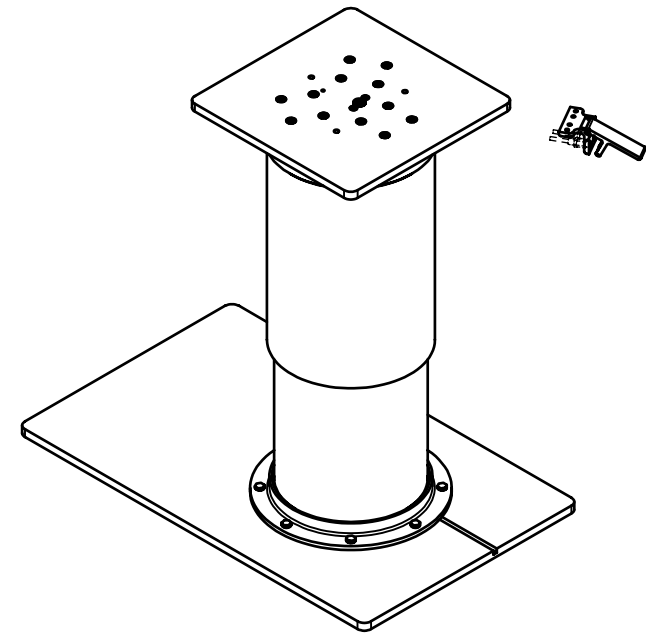
REVISIONS				
REV	DESCRIPTION	REV BY	APPROVED	DATE
A	INITIAL RELEASE	JKC	KET	09/20/02
B	SEE ECO N72181B	JPM	JWS	12/15/05
C	SEE ECO N72181C	JAM	DO NOT USE	

NOTES:

- 1 REFER TO THE TOP LEVEL "ERP" BILL OF MATERIAL FOR ACTUAL TOP PLATE, BOTTOM PLATE AND THE TABLE LEG PART NUMBERS. SUPPLY A COPY OF THE "ERP" BILL OF MATERIAL AND DRAWINGS OF REQUIRED TOP PLATE, BOTTOM PLATE AND THE TABLE LEG WITH THIS DOCUMENT. USE THE DRAWINGS TO DEFINE ACTUAL TABLE DIMENSIONS FOR INSTALLATION.
- 2 ATTACHMENT OF P/N 72181-XX (PEDESTAL) TO THE TABLE TOP:
 - A. THE WEIGHT OF THE TABLE TOP MUST NOT EXCEED VALUES GIVEN IN TABLE I BELOW, OR FOR ASSEMBLIES THAT USE A SLIDE TOP MECH AND / OR A LARGE TOPPLATE (APPROX. 17 LBS. OR 456 SQ.IN.) TABLE TOP WEIGHT LIMITS IN TABLE I MUST BE REDUCED BY 14 LBS. TABLE TOP WEIGHT LIMITS FOR PEDESTAL HEIGHT VALUES NOT GIVEN IN TABLE I CAN BE DETERMINED USING LINEAR INTERPOLATION.
 - B. THE CENTER OF GRAVITY OF THE TABLE TOP MUST BE WITHIN 5 IN. OF THE CENTERLINE OF THE PEDESTAL.
 - C. THE TABLE TOP MUST BE FASTENED TO THE PEDESTAL WITH FOUR(4) AN3 BOLTS (OR EQUIV.) IN THE HATCHED AREA SHOWN IN THE TOP VIEW. ADDITIONAL SCREWS OUTSIDE THE HATCHED AREA MAY IMPROVE RIGIDITY.
 - D. THE COMPLIANCE OF THE TABLE TOP TO FEDERAL AVIATION REGULATIONS IS THE RESPONSIBILITY OF THE INSTALLER.
- 3 ATTACHMENT OF P/N 72181-XX (PEDESTAL) TO THE AIRCRAFT STRUCTURE.
 - A. THE PEDESTAL AND TABLE TOP ASSEMBLY MUST BE FASTENED TO THE AIRCRAFT STRUCTURE WITH A MINIMUM OF FOUR(4) NAS517-3 (OR EQUIV.)
 - B. THE ABILITY OF THE AIRCRAFT STRUCTURE TO RESIST THE LOADS OF THE PEDESTAL TABLE TOP ASSEMBLY UNDER THE DESIGN LOAD FACTORS (SEE NOTE 4) IS THE RESPONSIBILITY OF THE INSTALLER.
 - C. COMPLIANCE TO APPLICABLE FEDERAL AVIATION REGULATIONS REGARDING AISLE CLEARANCE REQUIREMENTS IS THE RESPONSIBILITY OF THE INSTALLER.
4. DESIGN LOAD FACTORS:
 - A. THE FOLLOWING LOAD FACTORS WERE USED CONCERNING THE STRUCTURAL INTEGRITY OF THE PEDESTAL:

FORWARD:	9.00 G
AFT:	9.00 G
LATERAL:	9.00 G
UP:	6.50 G
DOWN:	9.6 G


THESE LOAD FACTORS MEET OR EXCEED THE REQUIREMENTS OF FAR PART 25.561 AND BOEING GALLEY DESIGN LOADS.

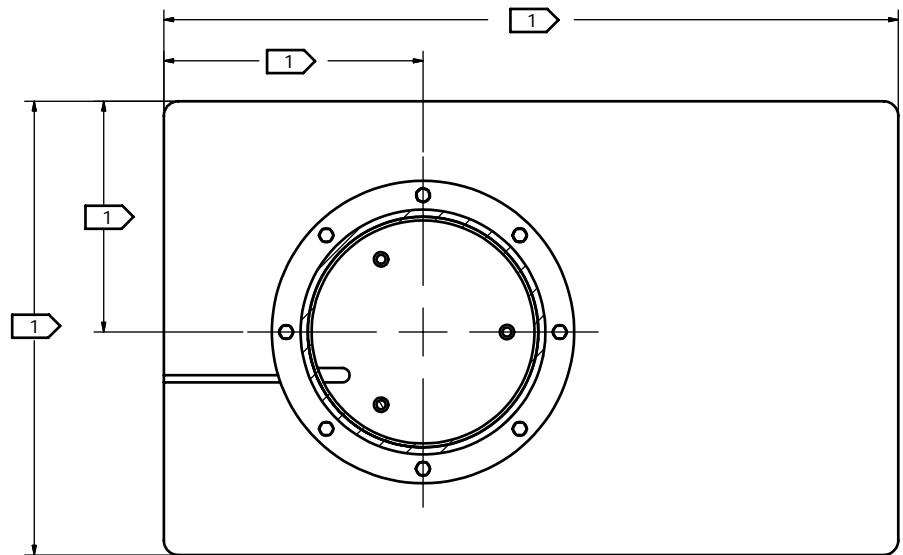
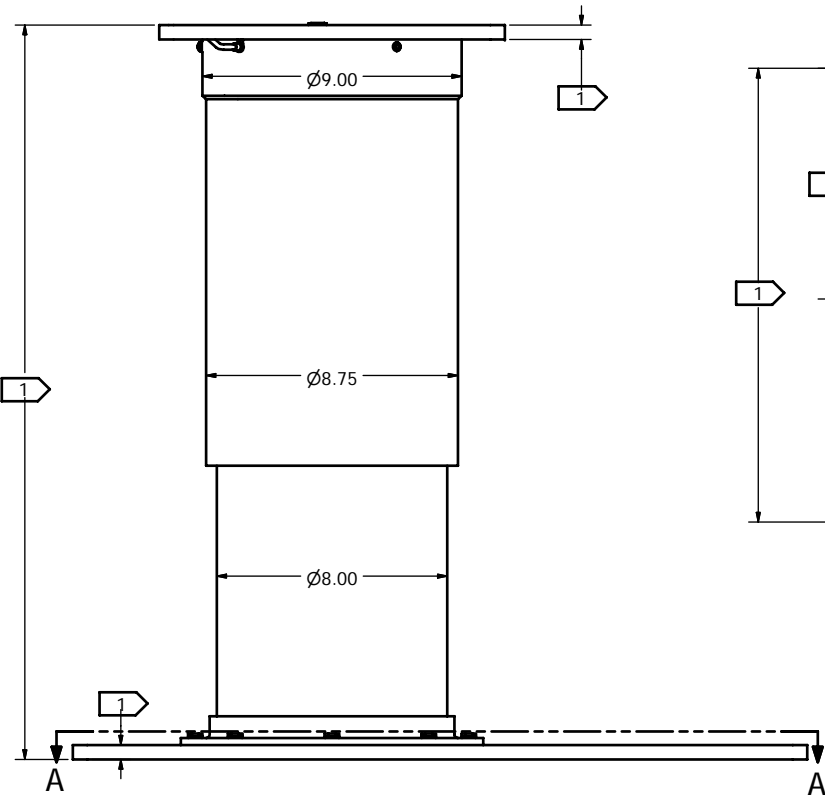
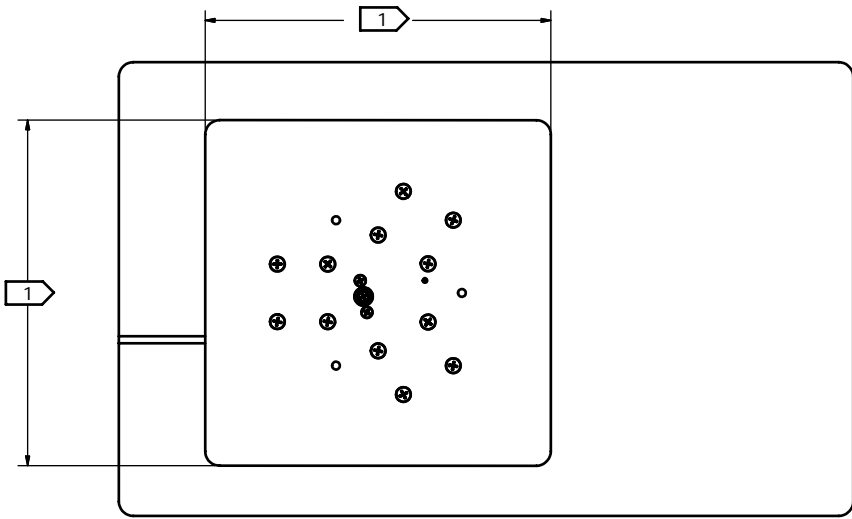


DEPLOYED

TABLE I: MAX TABLE TOP WEIGHT LIMITS 2A

PEDESTAL HEIGHT UP/DOWN	TABLE TOP WEIGHT (MAX)	
	DEPLOYED FOR TT&L	STOWED FOR TT&L
26 / 17.5	67 LBS.	123 LBS.
27 / 18.5	62 LBS.	115 LBS.
28 / 18.5	59 LBS.	115 LBS.
29 / 19.5	55 LBS.	108 LBS.

INSPECTION CLASS C	DRAWN: JPM	DATE: 11/17/2005	 Georgetown, Texas	
UNLESS OTHERWISE SPECIFIED	FINISH: N/A			
1) ALL SURFACES PER EPS-121-01-D	MATERIAL: N/A		TITLE PEDESTAL TABLE, 8", SINGLE LEG	
2) REMOVE ALL BURRS & SHARP EDGES .010-.015	The data, concepts or designs contained herein are the exclusive property of Entilite, Inc. or contain the proprietary rights of others and shall not be used, disclosed, copied, duplicated or reproduced without the written consent of Entilite, Inc.			
3) DIMENSIONS ARE IN INCHES	TOLERANCES: DECIMAL ANGULAR .XX ± .01 ± 1° .XXX ± .005		SIZE	DWG NO.
4) DO NOT SCALE DRAWING	63/		A	N72181
5) TOLERANCES:			REV.	SHEET
6) ALL MACHINED SURFACES			C	1 OF 2



SECTION A-A