

NOTES:

REVISIONS				
LTR	DESCRIPTION	REV BY	APPROVED	DATE
A	INITIAL RELEASE	KPE	<i>KPE</i>	4/11/03

1 REFER TO THE TOP LEVEL "ERP" BILL OF MATERIALS FOR ACTUAL HEIGHT AND WIDTH DEPENDENT PART NUMBERS THAT ARE REQUIRED. SUPPLY A COPY OF THE "ERP" BILL OF MATERIALS AND THE DRAWINGS OF THE REQUIRED PARTS NEEDED WITH THIS DOCUMENT. USE THE DRAWINGS TO DEFINE ACTUAL TABLE DIMENSIONS FOR INSTALLATION.

2 ATTACHMENT OF P/N 72242-XX PEDESTAL ASSEMBLY TO THE TABLETOP.

A. THE WEIGHT OF THE TABLETOP MUST NOT EXCEED 60 LBS.

B. THE CENTER OF GRAVITY OF THE TABLETOP MUST BE WITHIN 5 INCHES OF THE CENTERLINE OF THE PEDESTAL.

C. THE COMPLIANCE OF THE TABLETOP, AND ITS ATTACHMENT, WITH FEDERAL AVIATION REGULATIONS IS THE RESPONSIBILITY OF THE INSTALLER.

3 ATTACHMENT OF P/N 72242-XX PEDESTAL ASSEMBLY TO THE AIRCRAFT STRUCTURE.

A. THE ABILITY OF THE AIRCRAFT STRUCTURE TO RESIST THE LOADS OF THE TABLE ASSEMBLY UNDER THE DESIGN LOAD FACTORS (SEE NOTE 4) IS THE RESPONSIBILITY OF THE INSTALLER

B. COMPLIANCE WITH APPLICABLE FEDERAL AVIATION REGULATIONS REGARDING AISLE CLEARANCE REQUIREMENTS IS THE RESPONSIBILITY OF THE INSTALLER.

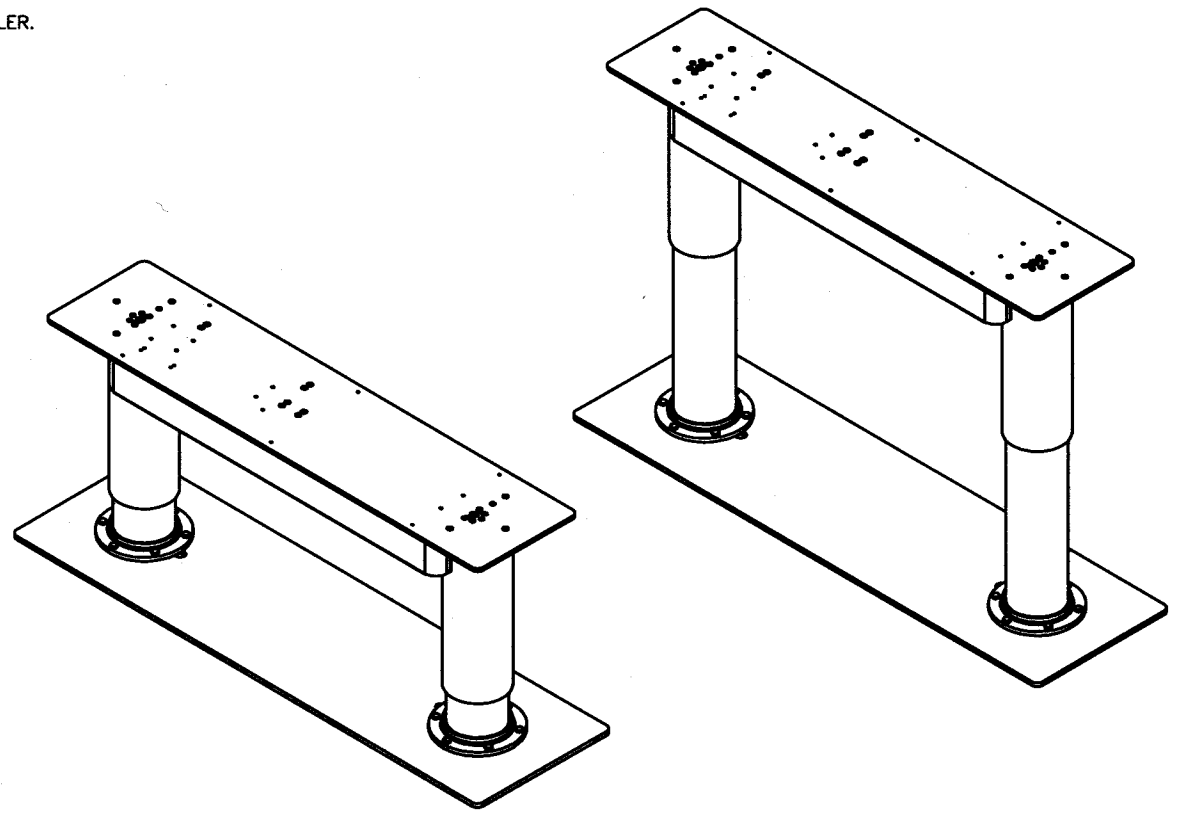
4. DESIGN LOAD FACTORS.


A. THE FOLLOWING LOAD FACTORS WERE USED IN CONSIDERING THE STRUCTURAL INTEGRITY OF THE PEDESTAL:

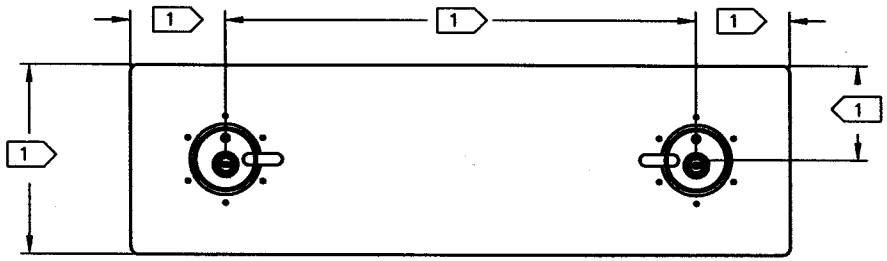
FORWARD	9.00 G
AFT:	1.50 G
LATERAL:	3.00 G
UP:	6.50 G
DOWN:	9.60 G

THESE LOAD FACTORS MEET OR EXCEED THE REQUIREMENTS OF FAR PART 25.561 AND BOEING GALLEY DESIGN LOADS.

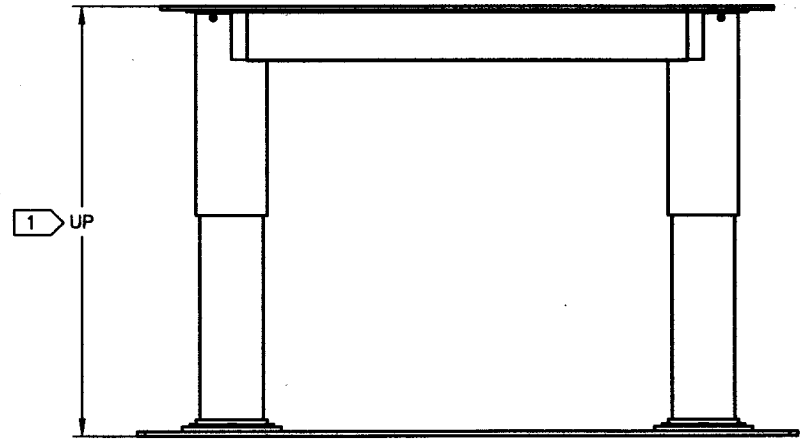
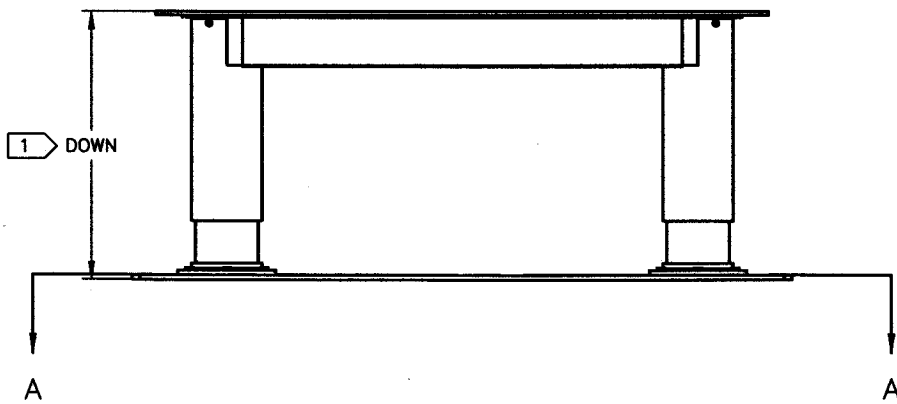
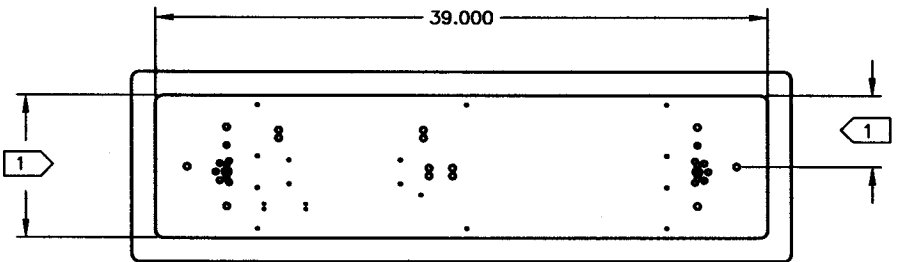
B. FOR TABLETOPS WEIGHING OVER 40 LBS, TABLE MUST BE IN THE STOWED POSITION FOR TAKE-OFF AND LANDING, AND MUST BE PLACARDED AS SUCH.



<p><i>Released</i></p> <p>INSPECTION CLASS A</p>	<p>DRAWN: KPE 4/10/03</p>	 <p>Austin, Texas</p>						
	<p>FINISH: N/A</p>							
<p>UNLESS OTHERWISE SPECIFIED TOLERANCES:</p> <table border="0"> <tr> <td>DECIMAL</td> <td>ANGULAR</td> </tr> <tr> <td>.XX ± .01</td> <td>± 1°</td> </tr> <tr> <td>.XXX ± .005</td> <td></td> </tr> </table>	DECIMAL	ANGULAR	.XX ± .01	± 1°	.XXX ± .005		<p>MATERIAL: N/A</p>	<p>TITLE: POWER 4" PEDESTAL TABLE INSTALLATION</p>
DECIMAL	ANGULAR							
.XX ± .01	± 1°							
.XXX ± .005								
<p>DIMENSIONS ARE IN INCHES</p> <p>ALL MACHINED SURFACES <math>\sqrt{R}</math></p> <p>DO NOT SCALE DRAWING</p> <p>REMOVE ALL BURRS &amp; SHARP EDGES .010-.015</p>	<p><small>The data, concepts or designs contained herein are the exclusive property of Enlite, Inc. or contain the proprietary rights of others and shall not be used, disclosed, copied, duplicated or reproduced without the written consent of Enlite, Inc.</small></p>	<table border="1"> <tr> <td>SIZE: A</td> <td>DWG NO.: N72242</td> <td>REV.: A</td> </tr> </table>	SIZE: A	DWG NO.: N72242	REV.: A			
SIZE: A	DWG NO.: N72242	REV.: A						
<p>SCALE: NONE</p>		<p>CAD FILE: 72242-XX-A-A</p>	<p>SHEET 1 OF 2</p>					



SECTION A-A



SIZE A	DWG NO. N72242	REV. A
SCALE NONE	CAD FILE 72242-XX-A-A	SHEET 2 OF 2