

NOTES:

REVISIONS				
LTR	DESCRIPTION	REV BY	APPROVED	DATE
A	INITIAL RELEASE	RAB	<i>KR</i>	4/17/02

1) REFER TO THE TOP LEVEL "ERP" BILL OF MATERIALS FOR ACTUAL TOP PLATE, BOTTOM PLATE, AND THE TABLE LEG PART NUMBERS. SUPPLY A COPY OF THE "ERP" BILL OF MATERIALS AND DRAWINGS OF REQUIRED TOP PLATE, BOTTOM PLATE, AND TABLE LEG WITH THIS DOCUMENT. USE THE DRAWINGS TO DEFINE ACTUAL TABLE DIMENSIONS FOR INSTALLATION.

2) ATTACHMENT OF MODEL 72252 (PEDESTAL) TO THE TABLE TOP.
 A) THE WEIGHT OF THE TABLE TOP MUST NOT EXCEED 75 LBS.
 B) THE CENTER OF GRAVITY OF THE THE TABLE TOP MUST BE WITHIN 5 INCHES OF THE CENTERLINE OF THE PEDESTAL.
 C) EACH TABLE TOP MUST BE FASTENED TO THE PEDESTAL WITH A MINIMUM OF FOUR AN3 BOLTS (OR EQUIV.) AS SHOWN IN THE TOP VIEW.
 D) THE COMPLIANCE OF THE TABLE TOP TO FEDERAL AVIATION

3) REGULATIONS IS THE RESPONSIBILITY OF THE INSTALLER.
 ATTACHMENT OF MODEL 72252 (PEDESTAL) TO AIRCRAFT STRUCTURE
 A) THE PEDESTAL/TABLE TOP ASSEMBLY MUST BE FASTENED TO THE AIRCRAFT STRUCTURE WITH EIGHT (MINIMUM) NAS517-3 SCREWS (OR EQUIV.) WITHIN THE FASTENER ZONES DEPICTED BY HATCHES.
 B) THE ABILITY OF THE AIRCRAFT STRUCTURE TO RESIST THE LOADS OF THE PEDESTAL/TABLE TOP ASSEMBLY UNDER THE DESIGN LOAD FACTORS (SEE NOTE 3) IS THE RESPONSIBILITY OF THE INSTALLER.
 D) COMPLIANCE TO APPLICABLE FEDERAL AVIATION REGULATIONS REGARDING AISLE CLEARANCE REQUIREMENTS IS THE RESPONSIBILITY OF THE INSTALLER.

4. DESIGN LOAD FACTORS

A) THE FOLLOWING LOAD FACTORS WERE USED IN CONSIDERING THE STRUCTURAL INTEGRITY OF THE PEDESTAL:

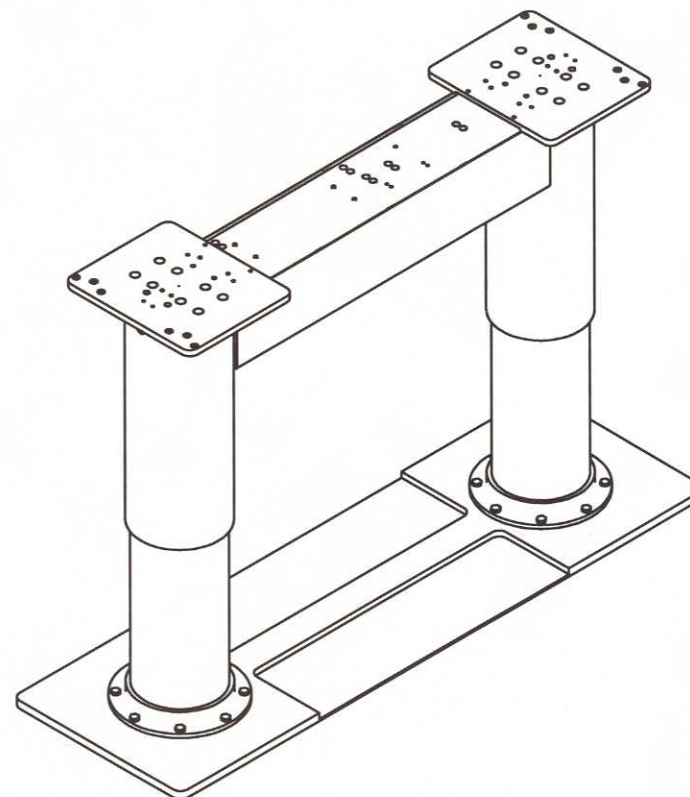
FORWARD: 9.0 G
 SIDE: 3.0 G
 UP: 6.50 G
 DOWN: 9.60 G


THESE LOAD FACTORS MEET OR EXCEED THE REQUIREMENTS OF FAR PART 25.561.

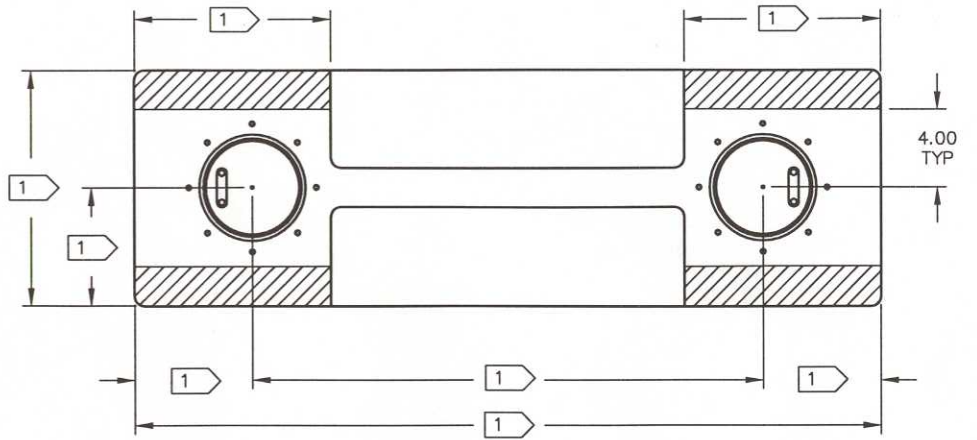
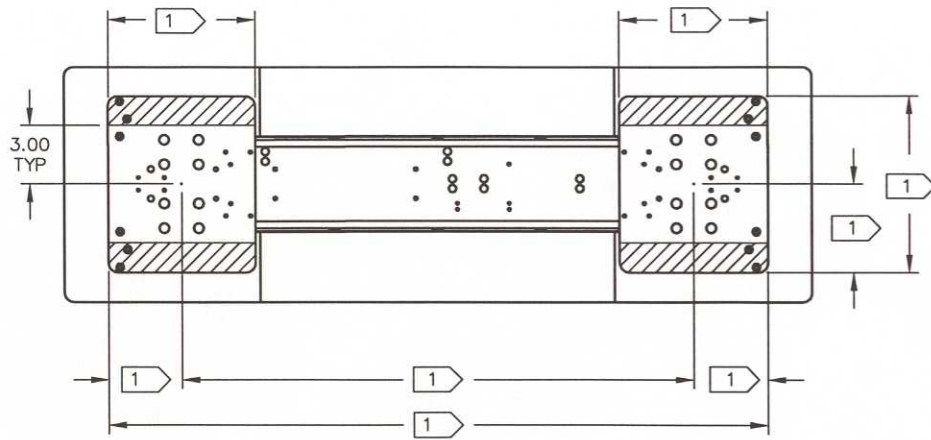
B) THE TABLE TOP SHALL NOT EXCEED 100 LBS.

5) CUSTOM NON-RECTANGULAR SHAPE.

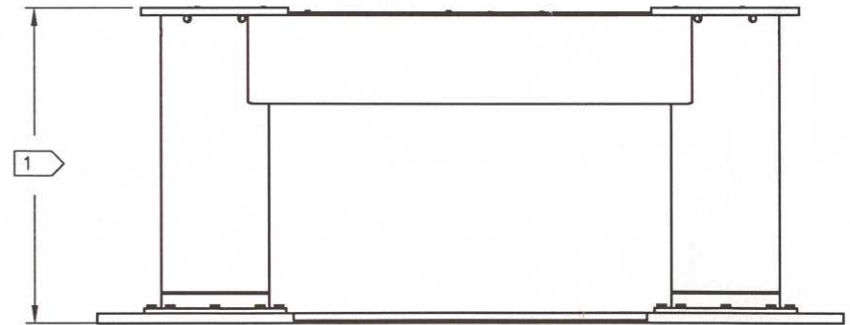
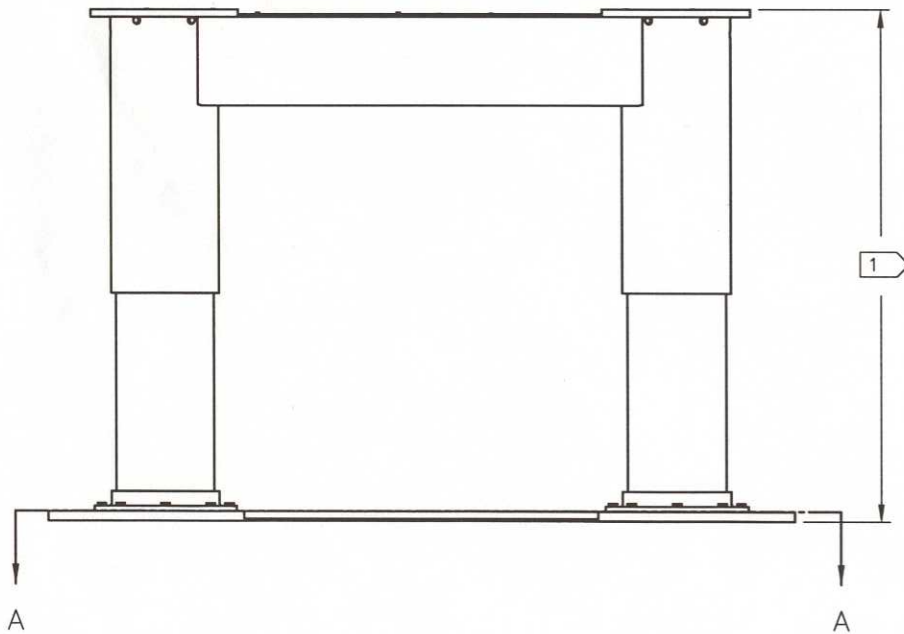
6) DIMENSIONS MAY NOT APPLY TO CUSTOM SIZED PLATES.



<p style="font-size: 2em; color: blue; font-family: cursive;">Released</p> <p>INSPECTION CLASS A</p>	<p>DRAWN RAB 04/12/02</p>	 <p>Enfilite, Inc. Austin, Texas</p>			
	<p>UNLESS OTHERWISE SPECIFIED TOLERANCES:</p> <table style="width: 100%; border: none;"> <tr> <td style="text-align: center;">DECIMAL .XX ± .01 .XXX ± .005</td> <td style="text-align: center;">ANGULAR ± 1°</td> </tr> </table> <p>DIMENSIONS ARE IN INCHES ALL MACHINED SURFACES $\sqrt{\text{R}}$ DO NOT SCALE DRAWING REMOVE ALL BURRS & SHARP EDGES .010-.015</p>	DECIMAL .XX ± .01 .XXX ± .005	ANGULAR ± 1°	<p>FINISH: N/A</p> <p>MATERIAL: N/A</p> <p><small>The data, concepts or designs contained herein are the exclusive property of Enfilite, Inc. or contain the proprietary rights of others and shall not be used, disclosed, copied, duplicated or reproduced without the written consent of Enfilite, Inc.</small></p>	<p>TITLE INSTALLATION 5" HI-LO PEDESTAL</p>
DECIMAL .XX ± .01 .XXX ± .005	ANGULAR ± 1°				
		<p>SIZE A</p>	<p>DWG NO. N72252</p>	<p>REV. A</p>	
		<p>SCALE NONE</p>	<p>CAD FILE 72252-XX-A-A</p>	<p>SHEET 1 OF 2</p>	



SECTION A-A



SIZE A	DWG NO. N72252	REV. A
SCALE NONE	CAD FILE 72252-XX-A-A	SHEET 2 OF 2