

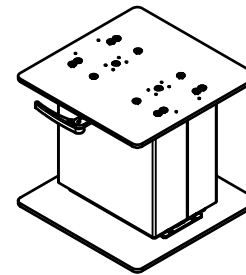
NOTES:

1 REFER TO TOP LEVEL "ERP" BILL OF MATERIALS FOR ACTUAL HEIGHT AND WIDTH DEPENDENT PART NUMBERS THAT ARE REQUIRED. SUPPLY A COPY OF THE "ERP" BILL OF MATERIALS AND THE DRAWINGS OF THE REQUIRED PARTS NEEDED WITH THIS DOCUMENT. USE THE DRAWINGS AND CUSTOMER SPEC SHEET TO DEFINE ACTUAL TABLE DIMENSIONS FOR INSTALLATION.

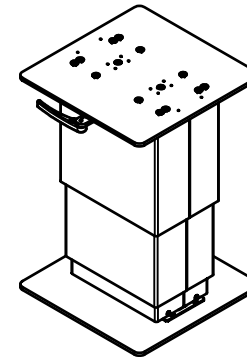
2. ATTACHMENT OF P/N 72580-XX PEDESTAL ASSEMBLY TO THE TABLE TOP.
- A. THE WEIGHT OF THE TABLE TOP MUST NOT EXCEED 45 LBS.
 - B. THE CENTER OF GRAVITY OF THE TABLE TOP MUST BE WITHIN 5 INCHES OF THE CENTERLINE OF THE PEDESTAL.
 - C. THE TABLE TOP MUST BE FASTENED TO THE PEDESTAL WITH A MINIMUM OF FOUR AN3 BOLTS (OR EQUIV.) IN THE HATCHED AREA SHOWN IN THE TOP VIEW. ADDITIONAL SCREWS OUTSIDE THE HATCHED ARE MAY IMPROVE RIGIDITY.
 - D. THE COMPLIANCE OF THE TABLE TOP TO FEDERAL AVIATION REGULATIONS IS THE RESPONSIBILITY OF THE INSTALLER.
3. ATTACHMENT OF P/N 72580-XX PEDESTAL ASSEMBLY TO THE AIRCRAFT STRUCTURE.
- A. THE PEDESTAL TABLE ASSEMBLY MUST BE FASTENED TO THE AIRCRAFT STRUCTURE WITH A MINIMUM FOUR AN3 BOLTS OR EQUIVALENT. THE INSTALLATION OF ADDITIONAL FASTENERS MAY IMPROVE RIGIDITY.
 - B. THE ABILITY OF THE AIRCRAFT STRUCTURE TO RESIST THE LOADS OF THE PEDESTAL ASSEMBLY UNDER THE DESIGN LOAD FACTORS (SEE NOTE 4) IS THE RESPONSIBILITY OF THE INSTALLER.
 - C. COMPLIANCE TO APPLICABLE FEDERAL AVIATION REGULATIONS REGARDING AISLE CLEARANCE REQUIREMENTS IS THE RESPONSIBILITY OF THE INSTALLER.

4. DESIGN LOAD FACTORS.
- A. THE FOLLOWING LOAD FACTORS WERE USED IN CONSIDERING THE STRUCTURAL INTEGRITY OF THE PEDESTAL:
 - FORWARD: 9.00 G
 - AFT: 3.27 G
 - LATERAL: 3.00 G
 - UP: 6.50 G
 - DOWN: 9.60 G
 THESE LOAD FACTORS MEET OR EXCEED THE REQUIREMENTS OF 14CFR PART 25.561. SEE STRESS REPORT R72520.
 - B. TABLE MUST BE IN THE STOWED POSITION FOR TAXI, TAKE-OFF AND LANDING, AND MUST BE PLACARDED AS SUCH.

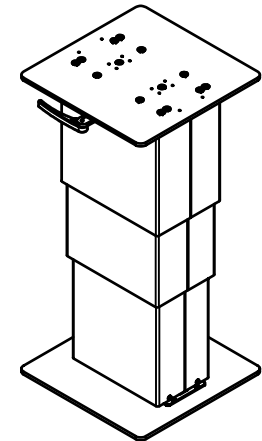
REVISIONS				
REV	DESCRIPTION	REV BY	APPROVED	DATE
A	INITIAL RELEASE	EPW	DO NOT USE	




STOWED



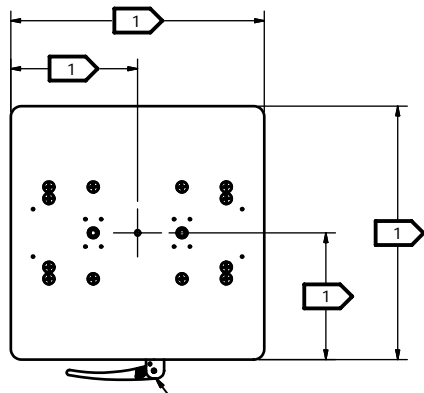
MID



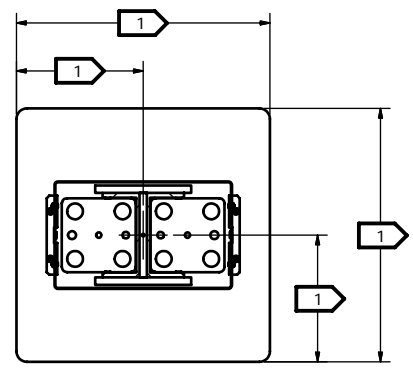
DEPLOYED

INSPECTION CLASS C	DRAWN: EPW	DATE: 12/20/2006	 <p>Georgetown, Texas</p>	
UNLESS OTHERWISE SPECIFIED	FINISH: N/A			
1) ALL SURFACES PER EPS-121-01-D	MATERIAL: N/A		TITLE PEDESTAL, TABLE, SGL LO-STOW MANUAL	
2) REMOVE ALL BURRS & SHARP EDGES .010-.015	The data, concepts or designs contained herein are the exclusive property of Entilite, Inc. or contain the proprietary rights of others and shall not be used, disclosed, copied, duplicated or reproduced without the written consent of Entilite, Inc.			
3) DIMENSIONS ARE IN INCHES	SIZE A	DWG NO. N72580	REV. A	SHEET 1 OF 2
4) DO NOT SCALE DRAWING				
5) TOLERANCES:				
DECIMAL ANGULAR				
.XX ± .04 ± 1°				
.XXX ± .010				
6) ALL MACHINED SURFACES 63/√				

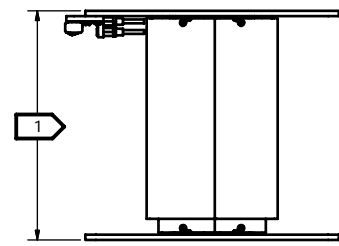
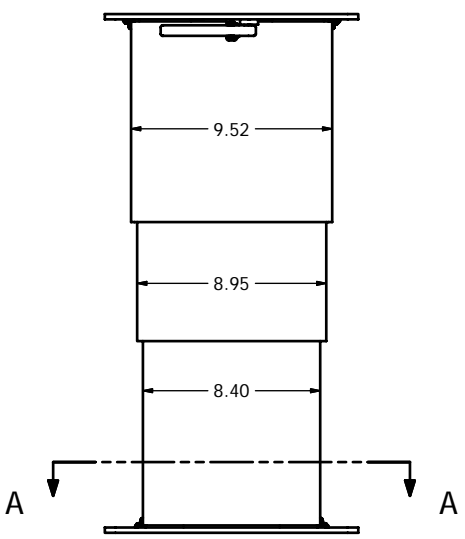
6 5 4 3 2 1



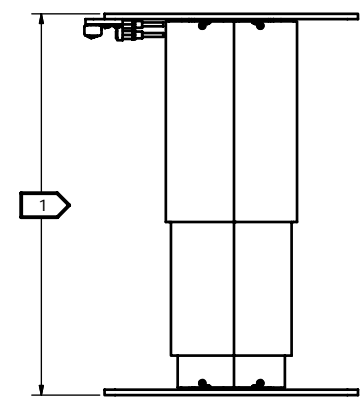
CONTROL HANDLE LOCATION AND
ORIENTATION TBD BY CUSTOMER
(SHOWN FOR REFERENCE)



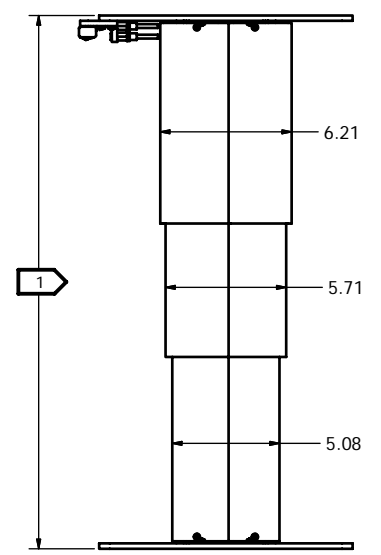
SECTION A-A



STOWED



MID



DEPLOYED

SIZE	DWG NO.	REV.	SHEET
A	N72580	A	2 OF 2

6 5 4 3 2 1