

NOTES:

1. REFER TO THE TOP LEVEL "ERP" BILL OF MATERIALS FOR ACTUAL TOP PLATE, BOTTOM PLATE, AND THE TABLE LEG PART NUMBERS. SUPPLY A COPY OF THE "ERP" BILL OF MATERIALS AND DRAWINGS OF REQUIRED TOP PLATE, BOTTOM PLATE, AND TABLE LEG WITH THIS DOCUMENT. USE THE DRAWINGS TO DEFINE ACTUAL TABLE DIMENSIONS FOR INSTALLATION.

2 ATTACHMENT OF P/N 72181-XX (PEDESTAL) TO THE TABLE TOP.

- A. THE WEIGHT OF THE TABLE TOP MUST NOT EXCEED 55 LBS.
- B. THE CENTER OF GRAVITY OF THE TABLE TOP MUST BE WITHIN 5 INCHES OF THE CENTERLINE OF THE PEDESTAL.
- C. THE TABLE TOP MUST BE FASTENED TO THE PEDESTAL WITH FOUR AN3 BOLTS (OR EQUIV.) IN THE HATCHED AREA SHOWN IN THE TOP VIEW. ADDITIONAL SCREWS OUTSIDE THE HATCHED AREA MAY IMPROVE RIGIDITY.
- D. THE COMPLIANCE OF THE TABLE TOP TO FEDERAL AVIATION REGULATIONS IS THE RESPONSIBILITY OF THE INSTALLER.

3 ATTACHMENT OF P/N 72181-XX (PEDESTAL) TO AIRCRAFT STRUCTURE.

- A. THE PEDESTAL AND TABLE TOP ASSEMBLY MUST BE FASTENED TO THE AIRCRAFT STRUCTURE WITH (MINIMUM) FOUR NAS517-3 SCREWS (OR EQUIV.) IN THE HATCHED AREA SHOWN IN SECTION A-A. ADDITIONAL SCREWS OUTSIDE THE HATCHED AREA MAY IMPROVE RIGIDITY.
- B. THE ABILITY OF THE AIRCRAFT STRUCTURE TO RESIST THE LOADS OF THE PEDESTAL TABLE TOP ASSEMBLY UNDER THE DESIGN LOAD FACTORS (SEE NOTE 4) IS THE RESPONSIBILITY OF THE INSTALLER
- C. COMPLIANCE TO APPLICABLE FEDERAL AVIATION REGULATIONS REGARDING AISLE CLEARANCE REQUIREMENTS IS THE RESPONSIBILITY OF THE INSTALLER.

4. DESIGN LOAD FACTORS.

A. THE FOLLOWING LOAD FACTORS WERE USED IN CONSIDERING THE STRUCTURAL INTEGRITY OF THE PEDESTAL:

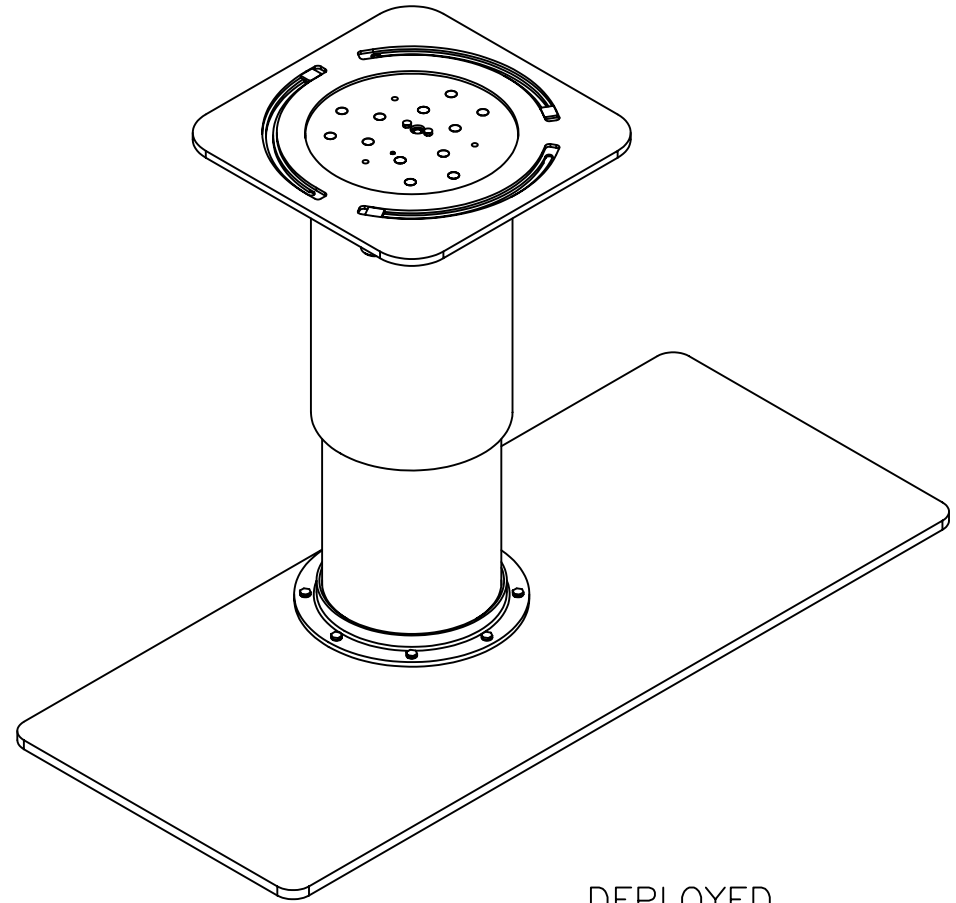
FORWARD	9.00 G
AFT:	1.50 G
LATERAL:	3.00 G
UP:	6.50 G
DOWN:	9.60 G

THESE LOAD FACTORS MEET OR EXCEED THE REQUIREMENTS OF FAR PART 25.561 AND BOEING GALLEY DESIGN LOADS.


FOR 72700-03 ASSEMBLY REFER TO PART NUMBER 72071-02 FOR TOP PLATE GEOMETRY.

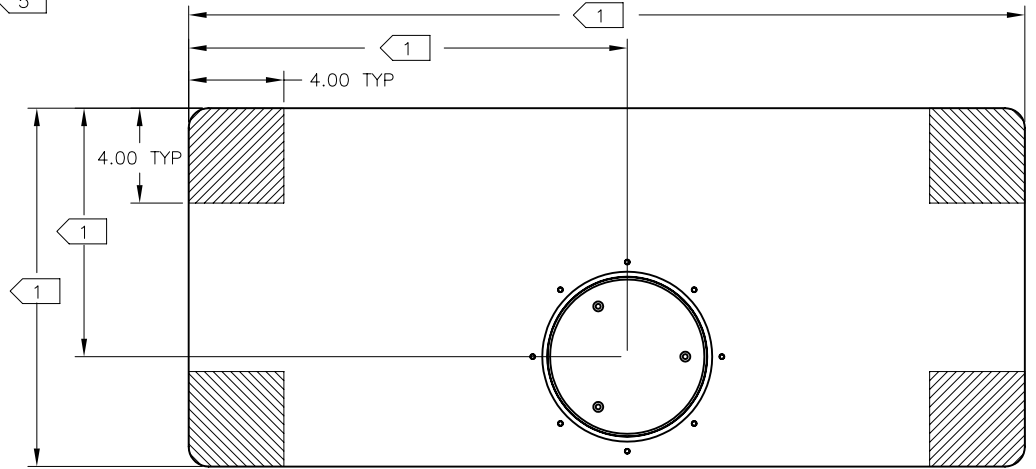
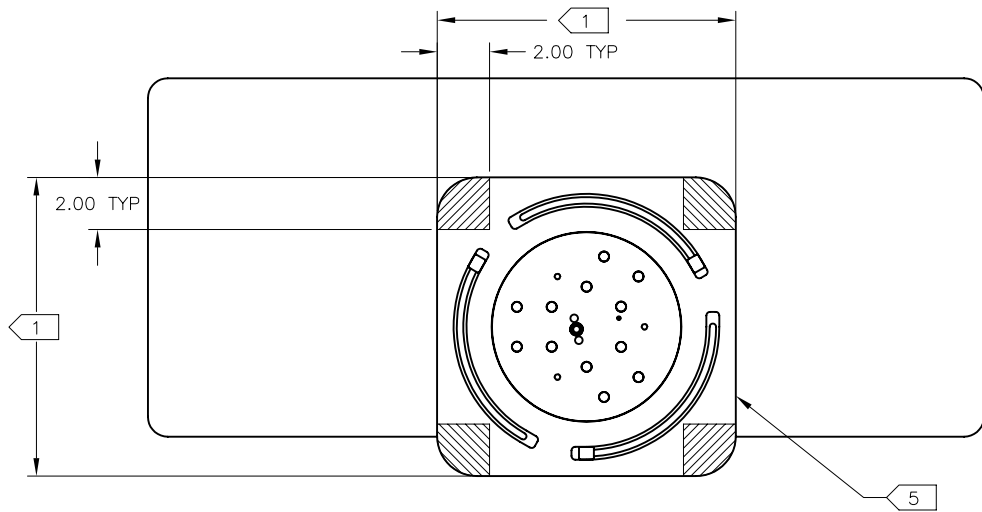
5

REVISIONS				
LTR	DESCRIPTION	REV BY	APPROVED	DATE
A	INITIAL RELEASE	JKC	KET	9/25/02
B	SEE ECO N72700B	JWS	KPE	11/14/06

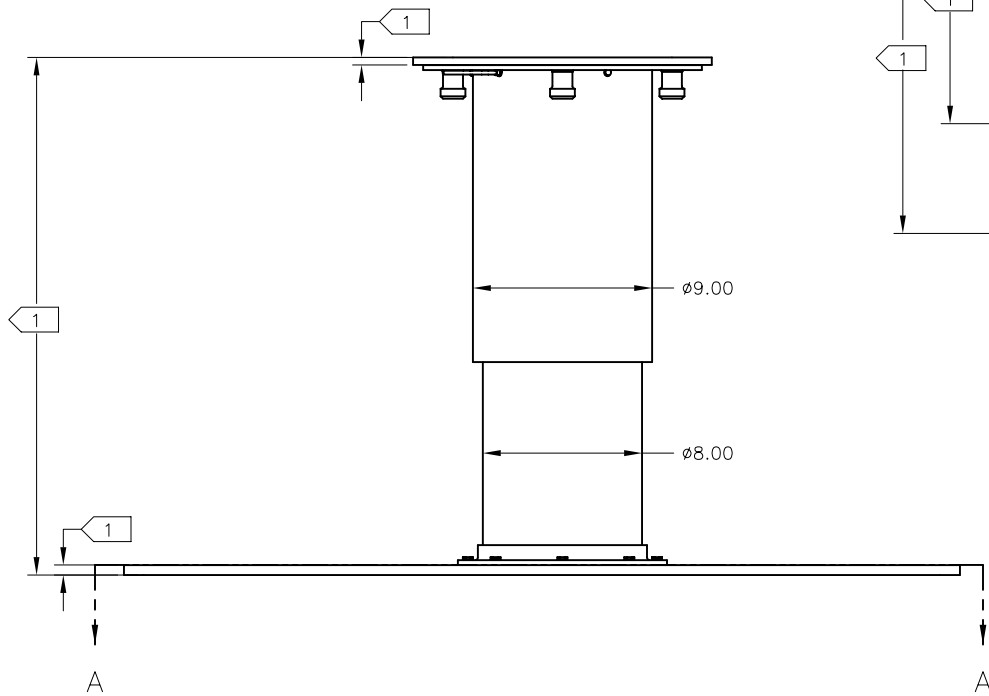


DEPLOYED

INSPECTION CLASS C	DRAWN JKC 09/24/02	 Austin, Texas				
	FINISH: N/A					
UNLESS OTHERWISE SPECIFIED TOLERANCES: DECIMAL .XX ± .01 .XXX ± .005 ANGULAR ± 1° DIMENSIONS ARE IN INCHES ALL MACHINED SURFACES $\frac{R}{32}$ DO NOT SCALE DRAWING REMOVE ALL BURRS & SHARP EDGES .010-.015	MATERIAL: N/A	TITLE INSTALLATION, 8" SINGLE LEG PEDESTAL TABLE, PIVOT				
	<i>The data, concepts or designs contained herein are the exclusive property of Enflite, Inc. or contain the proprietary rights of others and shall not be used, disclosed, copied, duplicated or reproduced without the written consent of Enflite, Inc.</i>			SIZE A	DWG NO. N72700	REV. B
	SCALE NONE	CAD FILE 72700-XX-B-B	SHEET 1	OF 2		



SECTION A-A



SIZE A	DWG NO. N72700	REV. B
SCALE NONE	CAD FILE 72700-XX-B-B	SHEET 2 OF 2