

NOTES:

1. ATTACHMENT OF THE PEDESTAL ASSEMBLY TO AIRCRAFT STRUCTURE.
 - A. THE PEDESTAL TABLE ASSEMBLY SHALL BE FASTENED TO THE AIRCRAFT STRUCTURE WITH ALL HARDWARE INDICATED AND IN THE MANNER SHOWN IN THIS DRAWING.
 - B. THE ABILITY OF THE AIRCRAFT STRUCTURE TO RESIST THE LOADS OF THE PEDESTAL TABLE ASSEMBLY UNDER THE DESIGN LOAD FACTORS (SEE NOTE 4) IS THE RESPONSIBILITY OF THE INSTALLER.
 - C. COMPLIANCE TO APPLICABLE FEDERAL AVIATION REGULATIONS REGARDING AISLE CLEARANCE REQUIREMENTS IS THE RESPONSIBILITY OF THE INSTALLER.

2. DESIGN LOAD FACTORS.

- A. THE FOLLOWING LOAD FACTORS WERE USED IN CONSIDERING THE STRUCTURAL INTEGRITY OF THE PEDESTAL:

FWD: 9.00 G
 AFT: 9.00 G
 SIDE: 9.00 G
 UP: 6.50 G
 DN: 9.60 G

HOR. ABUSE: 200 LBS.
 DN. ABUSE: 150 LBS.

THESE LOAD FACTORS MEET OR EXCEED THE REQUIREMENTS OF FAR PART 25.561 AND AIRBUS ABUSE LOADS.

- B. SEE STRESS REPORT R80208-1. FOR SUBSTANTIATION OF TABLETOP, PEDESTAL & INTERFACE LOADS.

3. REQUIRED PLACARDS.

INSTALLER IS RESPONSIBLE FOR PROVIDING AND PLACING PLACARDS.

4. ATTACHMENT OF CRASH PAD 72575-01.

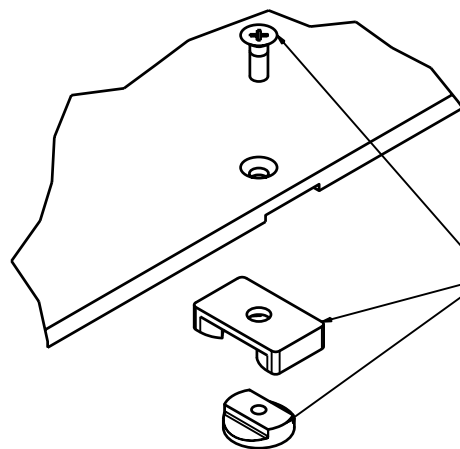
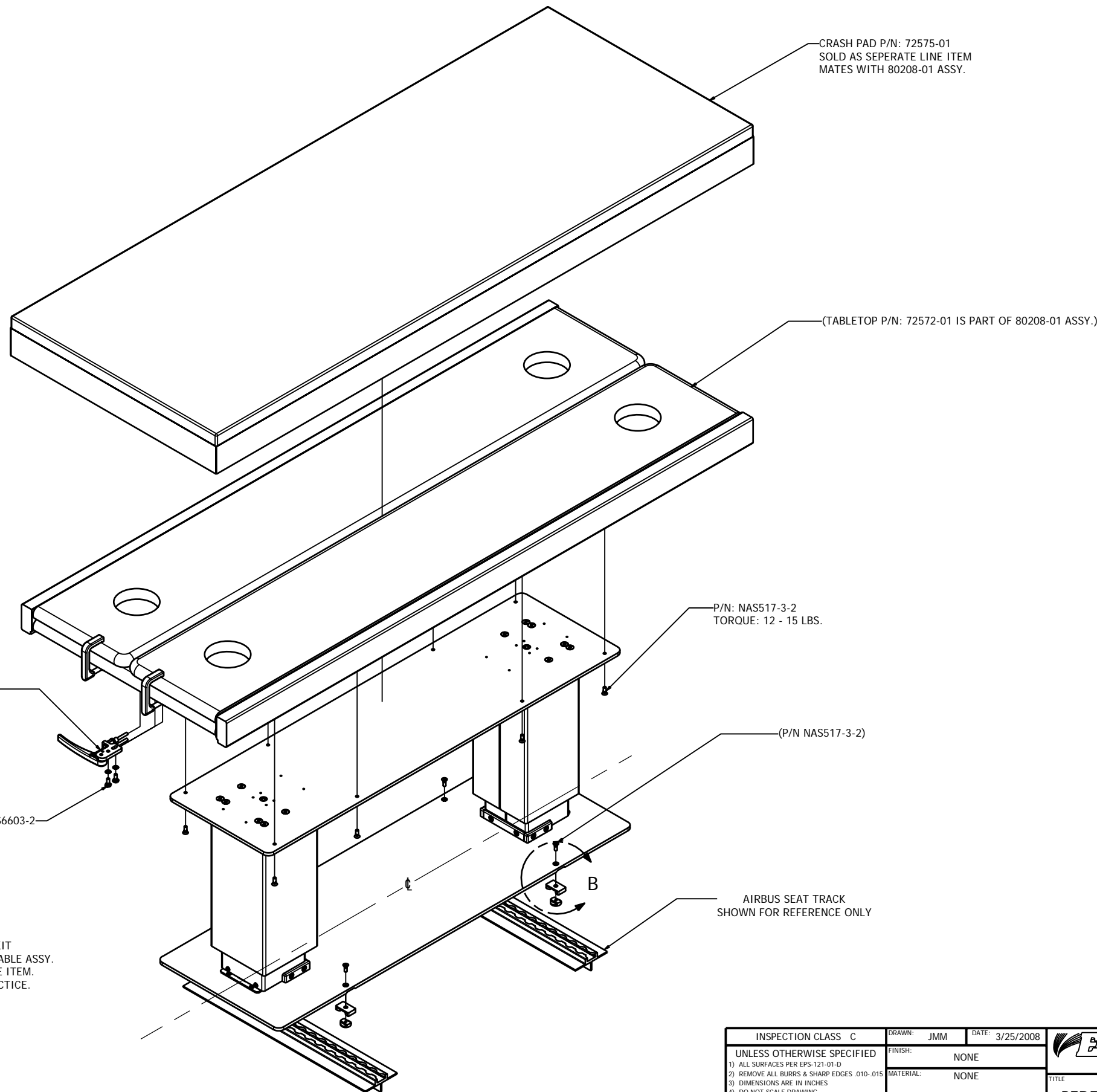
- A. CRASH PAD MUST BE IN PLACE DURING TAXI, TAKE-OFF AND LANDING IF TABLE IS IN THE UP POSITION.
- B. POSITION CRASH PAD ON TABLE TOP AND SECURE WITH VELCRO STRAPS.

5. ATTACHMENT OF TABLETOP:

- A. IF TABLETOP IS REMOVED, REINSTALL USING HARDWARE SHOWN.


6. PEDESTAL TABLE:

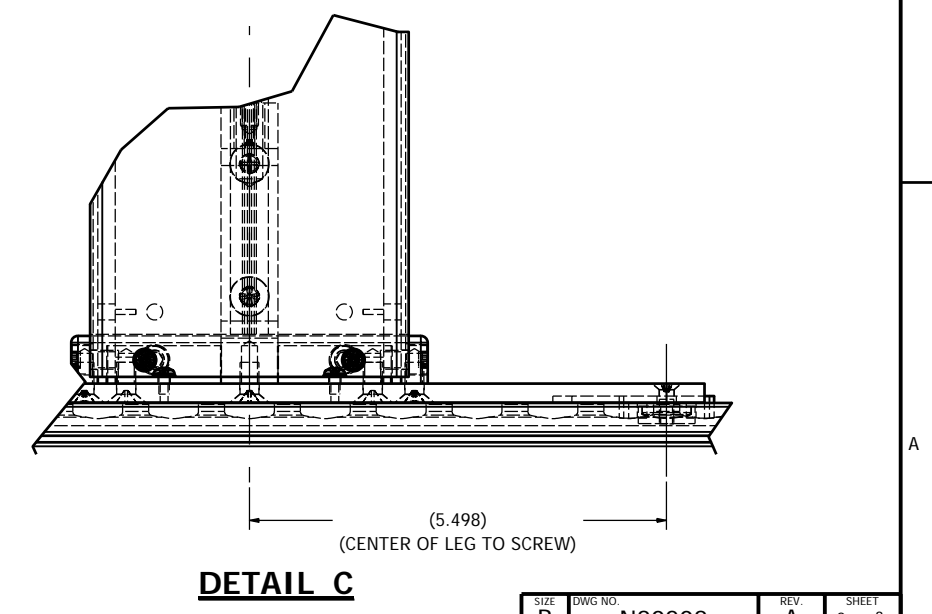
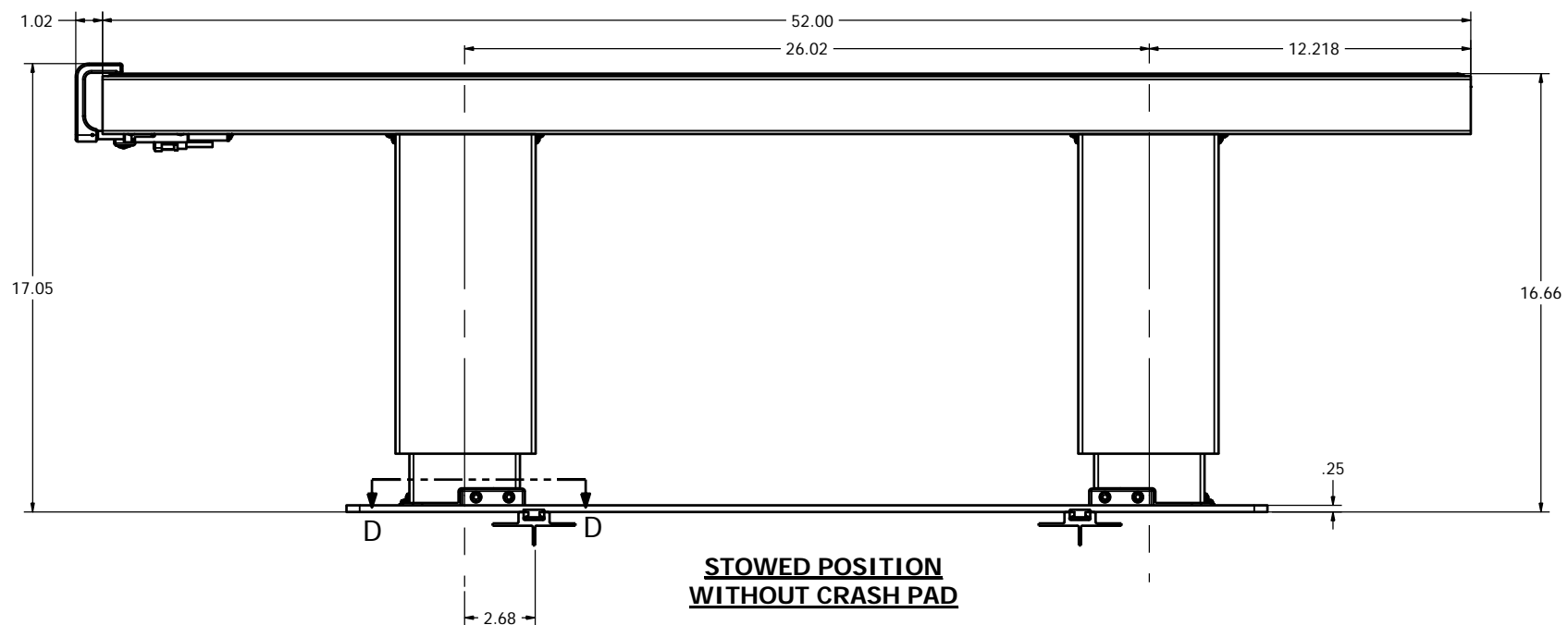
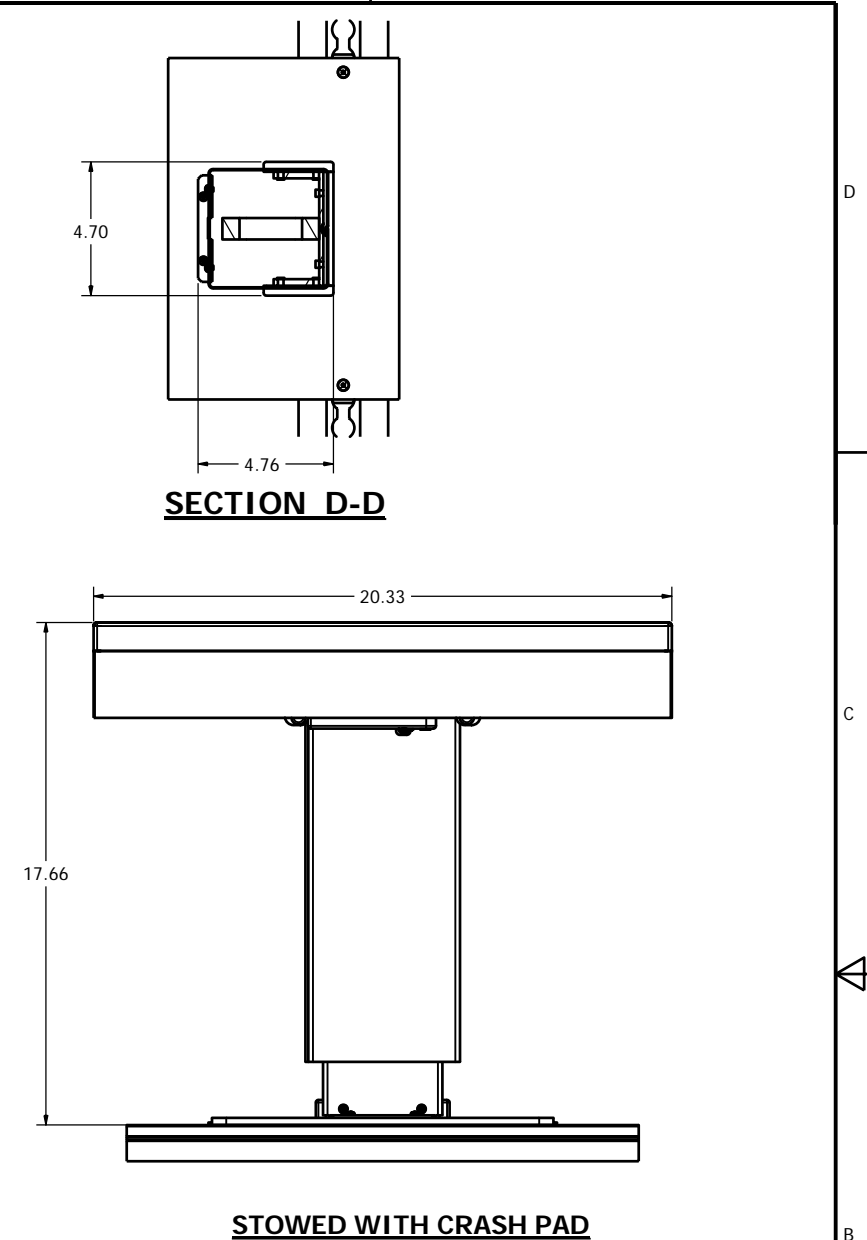
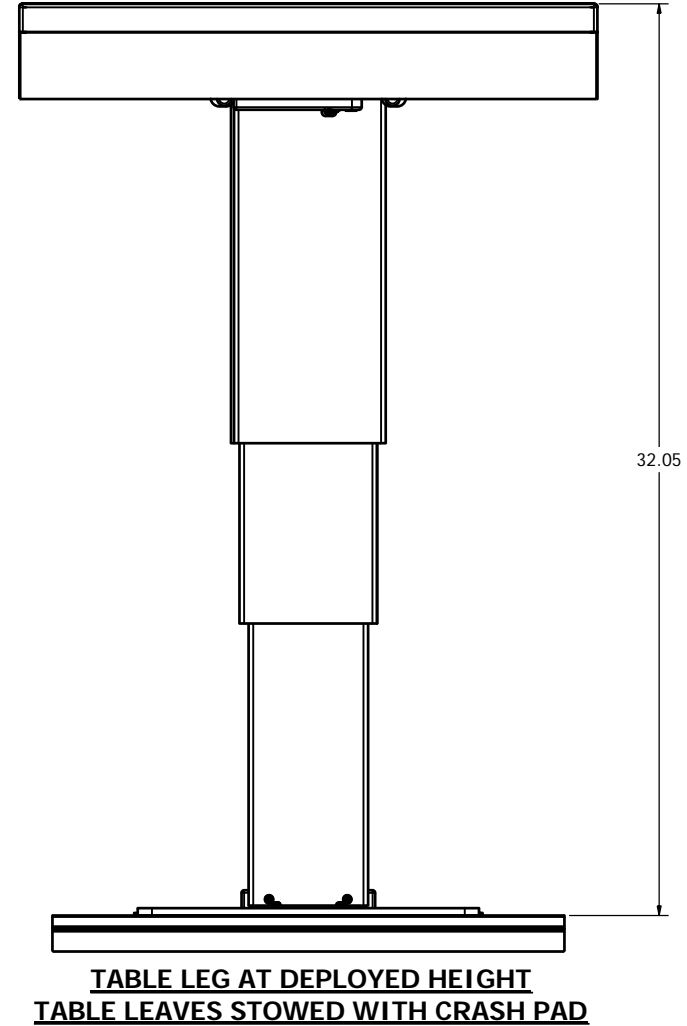
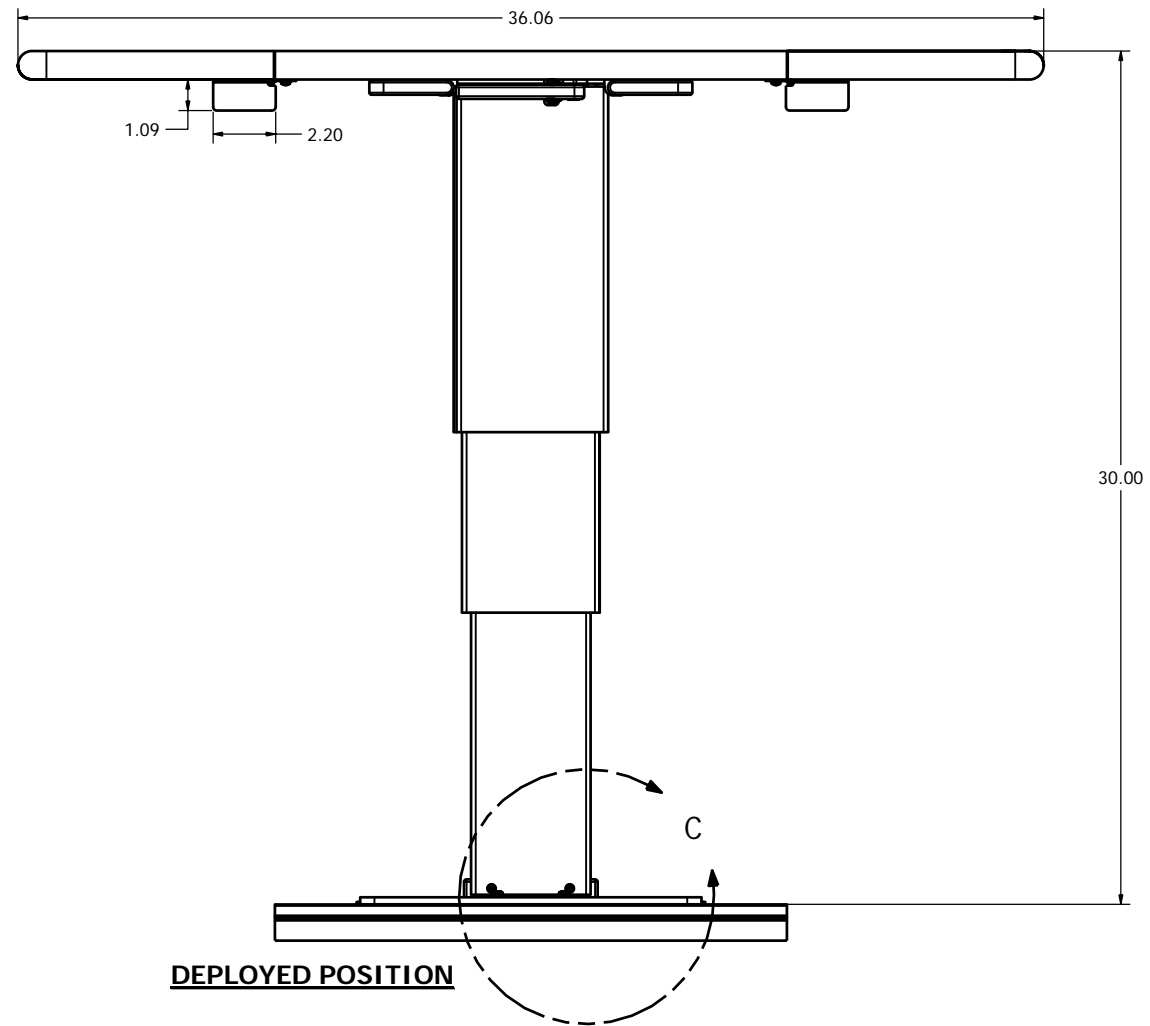
- A. FOLDING LEAVES MUST BE FOLDED UP AND SECURED FOR T.T. & L.
- B. PEDESTAL MAY REMAIN UP FOR ALL PHASES OF FLIGHT AND LANDING.



DETAIL B

P/N 72565-01 INSTALL KIT
 NOT PROVIDED WITH TABLE ASSY.
 SOLD AS SEPERATE LINE ITEM.
 TORQUE PER SHOP PRACTICE.

INSPECTION CLASS	C	DRAWN:	JMM	DATE:	3/25/2008	 Enlite, Inc. Georgetown, Texas
UNLESS OTHERWISE SPECIFIED		FINISH:	NONE	MATERIAL:	NONE	
1) ALL SURFACES PER EPS-121-01-D						The data, concepts or designs contained herein are the exclusive property of Enlite, Inc. or contain the proprietary rights of others and shall not be used, disclosed, copied, duplicated or reproduced without the written consent of Enlite, Inc.
2) REMOVE ALL BURRS & SHARP EDGES .010-.015						
3) DIMENSIONS ARE IN INCHES						
4) DO NOT SCALE DRAWING						
5) TOLERANCES:						
DECIMAL	ANGULAR					
.XX ± .04	± 1°					
.XXX ± .010						
6) ALL MACHINED SURFACES	63/					
SIZE	B	DWG NO.	N80208	REV.	A	SHEET
						1 OF 3



SIZE	DWG NO.	REV.	SHEET
B	N80208	A	2 OF 3

