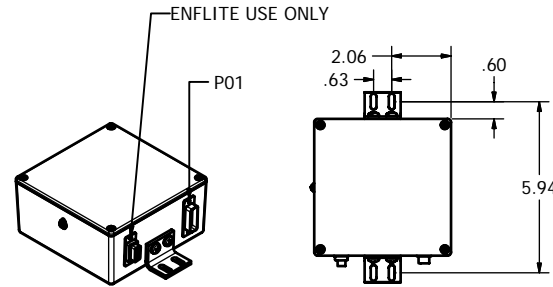
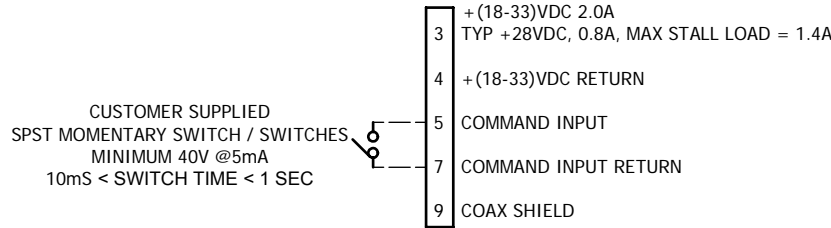


NOTES:

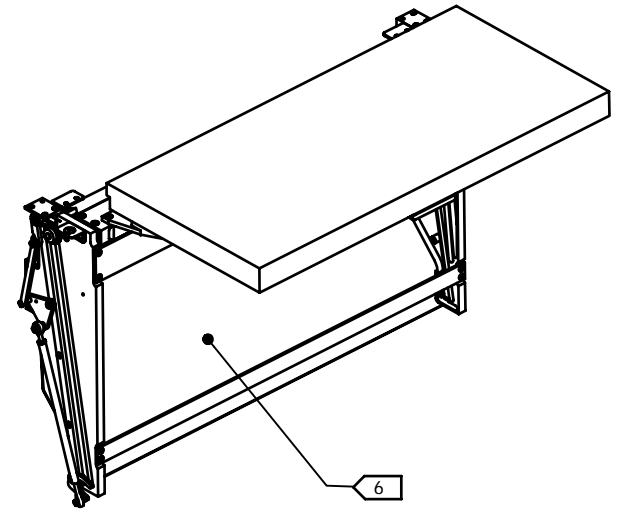
1. 83150-XX IS THE TABLE MECHANISM ONLY.
83150-XX-01 IS THE TABLE MECHANISM PLUS THE TABLE TOP WITH 22440-01 SLIDE HANDLE.
2. TABLE TOP MUST BE IN THE STOWED POSITION FOR TAKE-OFF AND LANDING. TABLE MUST BE PLACARDED AS SUCH.

REVISIONS				
REV	DESCRIPTION	REV BY	APPROVED	DATE
A	INITIAL RELEASE	WHC	DG	08/10/06
B	SEE ECO N83150	WHC	DG	08/23/06
C	SEE ECO N83150C	WHC	DG	08/29/06
D	SEE ECO N83150D	MTJ	DG	01/08/07
E	SEE ECO N83150DE	JAM	DO NOT USE	

INCOMING CONNECTOR PIN-OUT
(PN# M24308/2-1F)




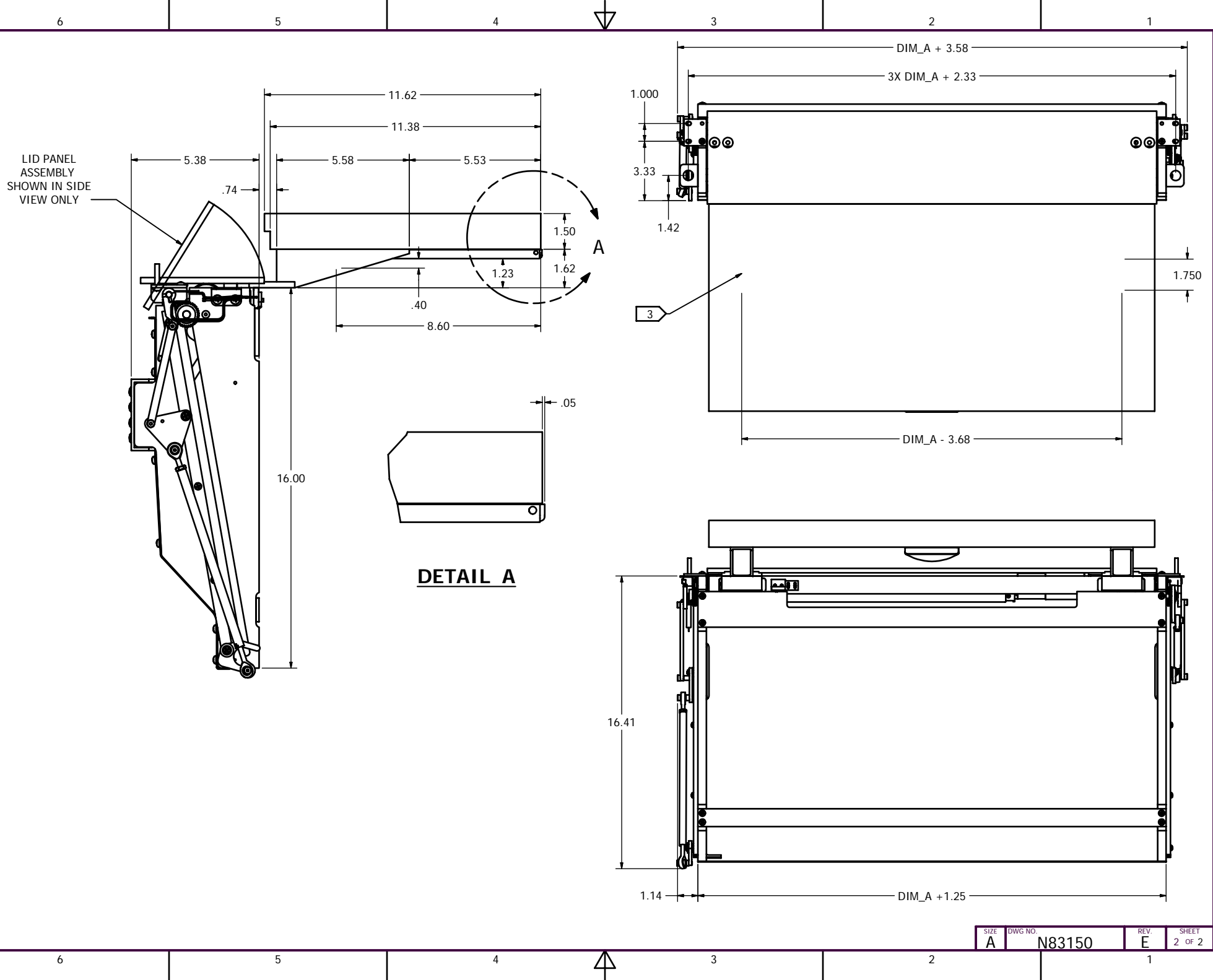
CIRCUIT BOARD SHIELDED BOX
MOUNTED REMOTELY WITH 4 #10 FASTENERS.
REF 83152-01 FOR WIRING SCHEMATIC.



ADDITIONAL NOTES:

- 3 ATTACHMENT OF TABLE TOP TO THE MODEL 83150 MECHANISM
 - A THE TABLE TOP MUST BE FASTENED TO THE MECHANISM WITH FOUR NAS514-3 FASTENERS WHERE SHOWN IN THE TOP VIEW.
 - B THE COMPLIANCE OF THE TABLE TOP TO FEDERAL AVIATION REGULATIONS IS THE RESPONSIBILITY OF THE INSTALLERS.
4. ATTACHMENT OF MODEL 83150 TO AIRCRAFT STRUCTURE
 - A THE WEIGHT OF THE MECHANISM/TABLE TOP ASSEMBLY MUST NOT EXCEED 25 LBS.
 - B THE ABILITY OF THE AIRCRAFT STRUCTURE TO RESIST THE LOADS OF THE MECHANISM/TABLE TOP ASSEMBLY UNDER THE DESIGN LOAD FACTORS (SEE NOTE 3) IS THE RESPONSIBILITY OF THE INSTALLER.
 - C COMPLIANCE TO APPLICABLE FEDERAL AVIATION REGULATIONS REGARDING AISLE CLEARANCE REQUIREMENTS IS THE RESPONSIBILITY OF THE INSTALLER.
5. DESIGN LOAD FACTORS
 - A THE MECHANISM CAN SUPPORT 144 LBS ULTIMATE APPLIED 13" FROM THE INBOARD EDGE OF THE MECHANISM. SEE STRESS REPORT "R83100"
 - B CONVERT ULTIMATE LOAD TO A ALLOWABLE TABLE TOP WEIGHT AND ITEMS WITH THE FOLLWING FORMULA: (WEIGHT OF ITEMS + WEIGHT OF TABLE TOP) X ULTIMATE LOAD FACTOR ≤ 144 LBS.
SEE OPERATIONS MANUAL "M83150" FOR ADDITIONAL INFORMATION ON MECHANISM OPERATION AND MAINTENANCE.
- 6 INSTALLER MAY CUT BACK COVER FOR ROUTING OF CABLE HARNESS.

INSPECTION CLASS C	DRAWN: WHC	DATE: 8/7/2006	 Georgetown, Texas	
UNLESS OTHERWISE SPECIFIED	FINISH: NONE			
1) ALL SURFACES PER EPS-121-01-D	MATERIAL: NONE		TITLE ELECTRIC SIDE WALL TABLE WITH LID LIFT	
2) REMOVE ALL BURRS & SHARP EDGES .010-.015				
3) DIMENSIONS ARE IN INCHES			SIZE	DWG NO.
4) DO NOT SCALE DRAWING			A	N83150
5) TOLERANCES:	DECIMAL	ANGULAR	REV.	SHEET
	.XX ± .01	± 1°	E	1 OF 2
	.XXX ± .005			
6) ALL MACHINED SURFACES	63/		The data, concepts or designs contained herein are the exclusive property of Enflite, Inc. or contain the proprietary rights of others and shall not be used, disclosed, copied, duplicated or reproduced without the written consent of Enflite, Inc.	



LID PANEL
ASSEMBLY
SHOWN IN SIDE
VIEW ONLY

DETAIL A

SIZE	DWG NO.	REV.	SHEET
A	N83150	E	2 OF 2